

FINE JEWELS

NEW YORK | 9 DECEMBER 2019



Sotheby's EST. 1744



FRONT COVER
LOTS 6 & 99

BACK COVER
LOTS 47 & 260

THIS PAGE
LOTS 10, 172 & 295

FINE
JEWELS





THIS PAGE
LOT 460

FINE JEWELS

**AUCTION IN NEW YORK
9 DECEMBER 2019
SALE N10234**

**SESSION ONE 10:00 AM
SESSION TWO 2:00 PM**

**ALL EXHIBITIONS FREE
AND OPEN TO THE PUBLIC**

Thursday 5 December
10 am-5 pm

Friday 6 December
10 am-5 pm

Saturday 7 December
10 am-5 pm

Sunday 8 December
1 pm-5 pm

1334 York Avenue
New York, NY 10021
+1 212 606 7000
sothebys.com

FOLLOW US @SOTHEBYS
#SOTHEBYSJEWELS

CERTIFICATES OF AUTHENTICITY

Various manufacturers may not issue certificates of authenticity upon request. Sotheby's is not under an obligation to furnish the purchaser with a certificate of authenticity from the manufacturer at any time. Unless the requirements for a rescission of the sale under the Terms of Guarantee are satisfied, the failure of a manufacturer to issue a certificate will not constitute grounds to rescind the sale.

GEMOLOGICAL CERTIFICATES & REPORTS

References in the catalogue descriptions to certificates or reports issued by gemological laboratories are provided only for the information of bidders, and Sotheby's does not guarantee and accepts no responsibility for the accuracy, terms or information contained in such certificates or reports. Please also note that laboratories may differ in their assessment of a gemstone (including its origin and presence, type and extent of treatments) and their certificates or reports may contain different results.

275
YEARS
EST. 1744

Sotheby's
EST. 1744

Specialists for this Sale



David Bennett
Worldwide Chairman
International Jewelry Division
+1 41 22 908 4842
david.bennett@sothebys.com



Gary Schuler
Chairman,
North and South America
+1 212 606 7095
gary.schuler@sothebys.com



Carol Elkins
Senior Specialist
+1 212 606 7062
carol.elkins@sothebys.com



Frank Everett
Sales Director
+1 212 894 1902
frank.everett@sothebys.com



Catharine Becket
Senior Specialist
+1 212 894 1027
catharine.becket@sothebys.com



Robin Wright
Senior Specialist
+1 212 894 1246
robin.wright@sothebys.com



Alexander Eblen
Senior Specialist
+1 212 894 1742
alexander.eblen@sothebys.com



Quig Bruning
Specialist
+1 310 786 1860
quig.bruning@sothebys.com



Kendall Reed
Specialist
+1 212 894 1137
kendall.reed@sothebys.com



Anna Ruzhnikov
Associate Cataloguer
+1 212 894 1041
anna.ruzhnikov@sothebys.com



Vivian Chen
Associate Cataloguer
+1 212 894 1918
vivian.chen@sothebys.com



Joanna Wheeler
Associate Cataloguer
+1 212 894 1491
joanna.wheeler@sothebys.com

Specialists and Auction Enquiries

For further information on lots in this auction please contact any of the specialists listed below.

SALE NUMBER

N10234 "YANG"

BIDS DEPARTMENT

+1 212 606 7414
fax +1 212 606 7016
bids.newyork@sothebys.com

Telephone bid requests should be received 24 hours prior to the sale. This service is offered for lots with a low estimate of \$5,000 and above.

HEAD OF FINE JEWELS SALES

Kendall Reed
kendall.reed@sothebys.com
+1 212 894 1137
fax +1 212 606 7014

SALE ADMINISTRATOR

Lucy Green
lucy.green@sothebys.com
+1 212 894 1025
fax +1 212 606 7014

POST SALE SERVICES

Rebecca Kraus
Post Sale Manager
rebecca.kraus@sothebys.com
+1 212 606 7444

PAYMENT, DELIVERY AND COLLECTION

+1 212 606 7444
FAX +1 212 606 7043
uspostsaleservices@sothebys.com

CATALOGUE PRICE

\$45 at the gallery

FOR SUBSCRIPTIONS CALL

+1 212 606 7000 USA
+44 (0)20 7293 5000
for UK & Europe

CONDITION REPORTS

Sotheby's Jewelry department is pleased to offer to potential purchasers Condition Reports of the lots in this catalogue. A Condition Report is an opinion describing in more depth the lot with regards to, but not limited to, the general condition, quality of stones and/or other relevant information.

PLEASE CONTACT

Nora Clarke
Client Liaison
nora.clarke@sothebys.com
+1 212 894 1506





THIS PAGE
LOTS 162 & 271

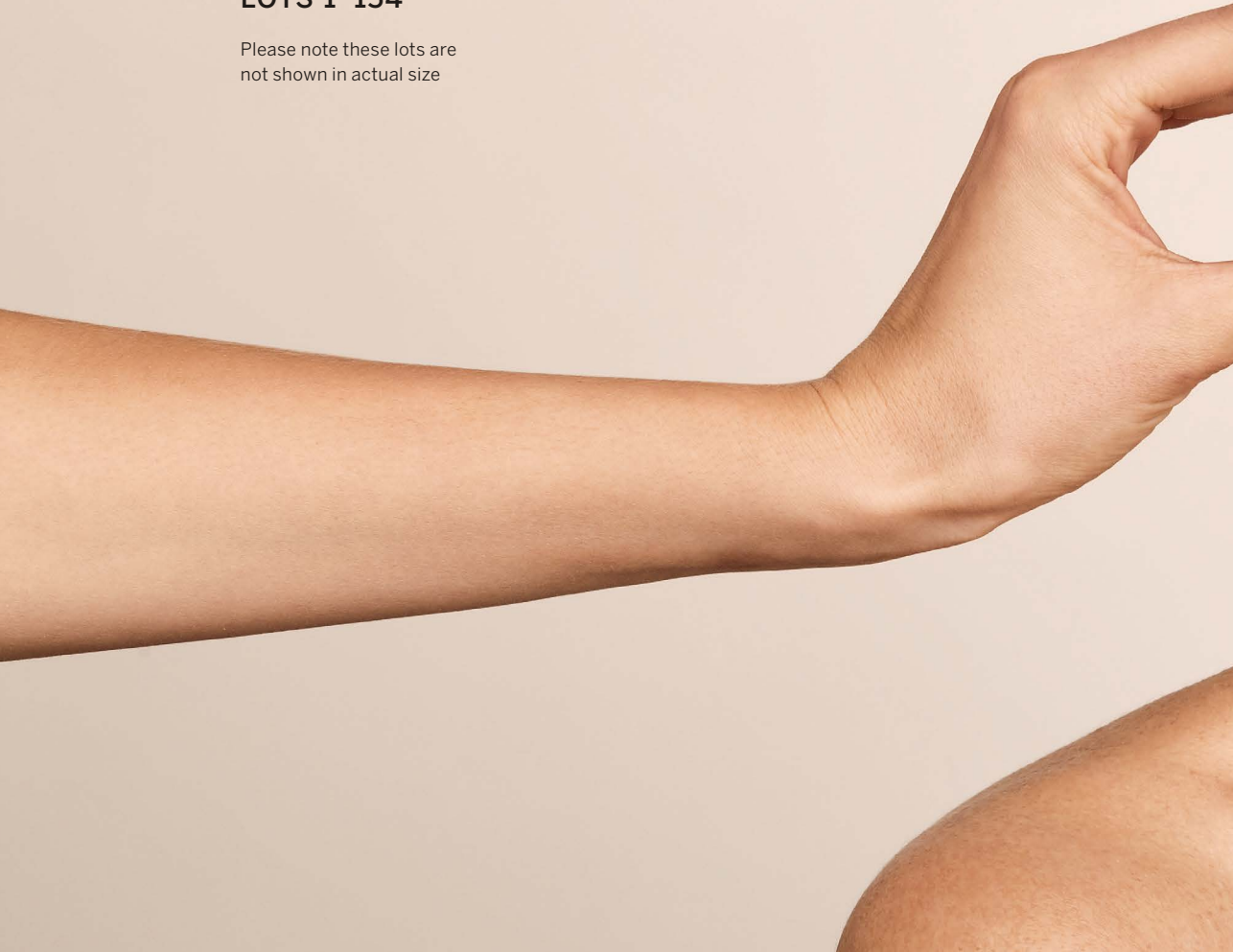
Contents

3	AUCTION INFORMATION
5	SPECIALISTS & AUCTION ENQUIRIES
8	SESSION ONE: LOTS 1–154
122	SESSION TWO: LOTS 155–306
226	CONDITIONS OF SALE
228	TERMS OF GUARANTEE ADDITIONAL TERMS AND CONDITIONS FOR LIVE ONLINE BIDDING
229	BUYING AT AUCTION
232	SELLING AT AUCTION
233	SOTHEBY'S SERVICES INFORMATION ON SALES AND USE TAX
234	IMPORTANT NOTICES
236	RING SIZE CHART
237	DIAMOND CLARITY GRADING DIAMOND COLOR GRADING GLOSSARY OF TERMS
238	DIAMOND LIST
239	COLORED STONE LIST
240	INTERNATIONAL DEPARTMENTS
241	HOW TO BID
244	INDEX OF MAKERS

SESSION ONE

**NEW YORK
MONDAY
9 DECEMBER 2019
10:00AM
LOTS 1-154**

Please note these lots are
not shown in actual size





THIS PAGE
LOTS 4 & 8



△ 1

GOLD BELT BUCKLE, DAVID WEBB

The rectangular buckle featuring a textured gold ram's head, measuring approximately 2 x 1¼ inches, gross weight approximately 32 dwts, *signed Webb*.

US\$ 2,000-3,000



△ 2

**PAIR OF GOLD AND ENAMEL
CUFFLINKS, DAVID WEBB**

Designed as a pair of gold ram's heads with boule-shaped terminals, applied with blue enamel, with green enamel eyes, gross weight approximately 22 dwts, *partially signed Webb*.

US\$ 3,000-5,000

GOLD NECKLACE, TIFFANY & CO.

Of ropetwist design, gross weight approximately 89 dwts, internal circumference 15 inches, signed Tiffany & Co.

US\$ 5,000-7,000





□ 4 SOLD WITHOUT RESERVE

PROPERTY OF A BEVERLY HILLS COLLECTOR

**PAIR OF BLUE TOPAZ AND PERIDOT
'BYZANTINE' PENDANT-EARCLIPS,
VERDURA**

The surmounts set with hexagonal-shaped blue topaz, suspending detachable pendants set with heptagonal-shaped blue topaz, topped by round peridot, *signed Verdura, with Italian assay and registry marks. With signed box.*

US\$ 4,000-6,000

5

PROPERTY FROM THE ESTATE OF SUSAN S.
DILLON

**AQUAMARINE AND DIAMOND
BRACELET, VERDURA**

Composed of step-cut aquamarines, spaced at intervals by gold ropetwist and round diamond-set crescent motifs, accented by single-cut diamonds, *length 7 inches, signed Verdura.*

US\$ 10,000-15,000



PROPERTY FROM THE ESTATE OF SUSAN S.
DILLON

**AQUAMARINE AND DIAMOND RING,
VERDURA**

Centering a cushion-cut aquamarine weighing approximately 6.00 carats, within a domed mounting pavé-set with round diamonds, accented by gold ropetwist, size 6, *unsigned*.

Accompanied by a photocopy of a valuation from Verdura, dated October 4, 1985, available upon request.

US\$ 5,000-7,000



7 SOLD WITHOUT RESERVE

PROPERTY OF A BEVERLY HILLS COLLECTOR

**PAIR OF GILT METAL EARCLIPS, JAR,
PARIS**

Designed as rose petals, one with a matte gold finish, the other with a polished gold finish, *signed JAR Paris, numbered 96, with French assay and workshop marks*. With signed pouch.

US\$ 3,000-5,000



8

PROPERTY FROM A CANADIAN-AMERICAN
COLLECTION

**PERIDOT AND BLUE TOPAZ RING,
VERDURA**

Centering a cushion-cut peridot, set between two
similarly-cut blue topaz, *size 8, signed Verdura.*

US\$ 5,000-7,000



9 SOLD WITHOUT RESERVE

PROPERTY OF A BEVERLY HILLS COLLECTOR
PAIR OF GOLD EARCLIPS, NEIL LANE

Designed as polished gold stylized tassels, *signed
N Lane.* Fitted with posts. With signed box.

US\$ 3,000-5,000



10

PROPERTY FROM A CANADIAN-AMERICAN
COLLECTION

**GOLD NECKLACE-BRACELET
COMBINATION**

Composed of 14 polished gold boules, gross
weight approximately 158 dwts, *length 20 inches,*
detachable into two 10-inch segments for wear as
bracelets.

US\$ 7,000-9,000

PROPERTY OF A LADY

**CARNELIAN AND TIGER'S EYE 'MAGIC
ALHAMBRA' NECKLACE AND PAIR
OF EARCLIPS, VAN CLEEF & ARPELS,
FRANCE**

The necklace composed of quatrefoil-shaped motifs of varying sizes set with carnelian and tiger's eye, on a fine link chain, together with a matching pair of earclips, *necklace length 16¼ inches, signed VCA, necklace numbered BL272857, earclips numbered JB 370081, with French assay and workshop marks. Earclips fitted with posts.*

US\$ 8,000-12,000

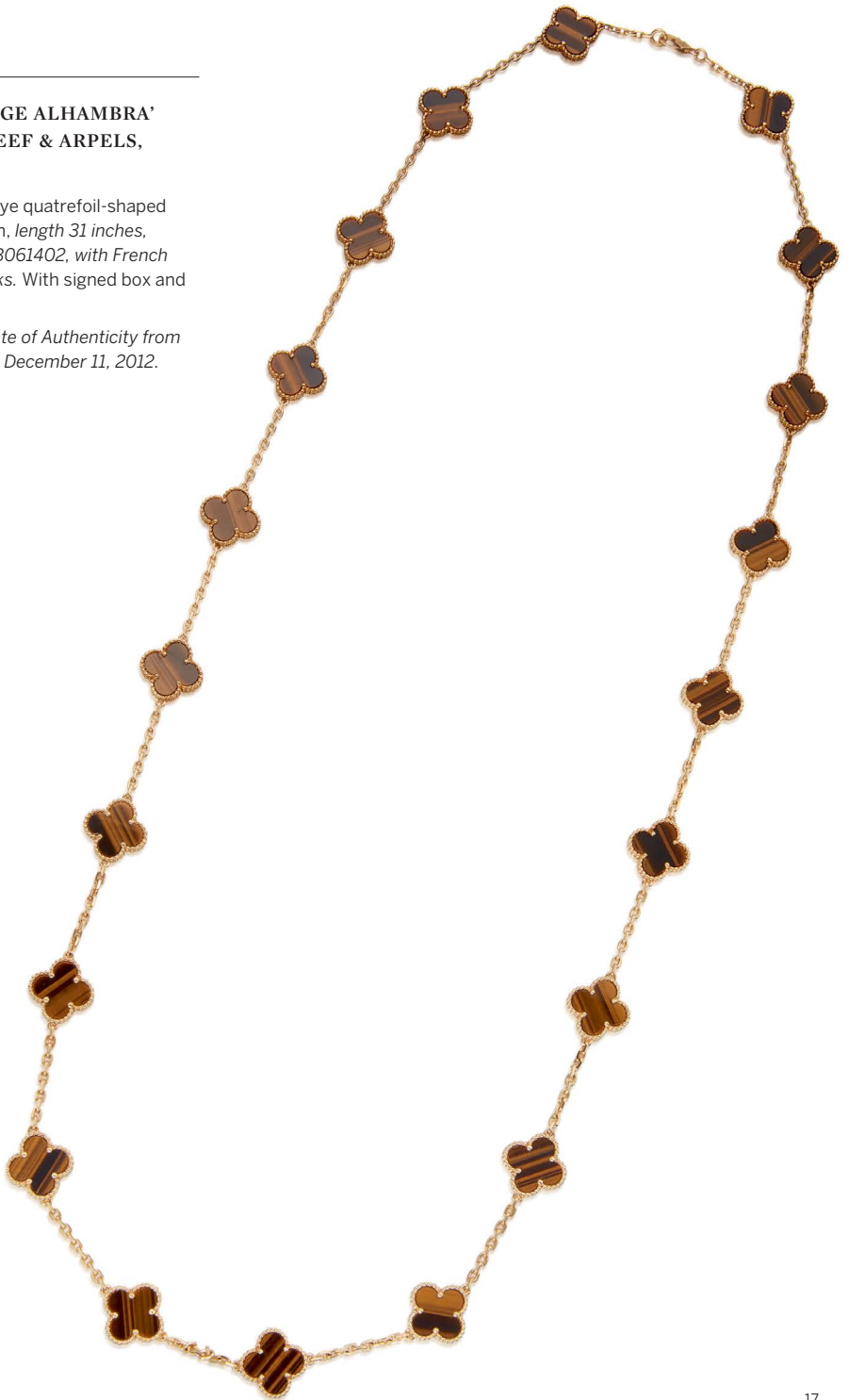


**TIGER'S EYE 'VINTAGE ALHAMBRA'
NECKLACE, VAN CLEEF & ARPELS,
FRANCE**

Composed of 20 tiger's eye quatrefoil-shaped motifs, on a fine link chain, length 31 inches, signed VCA, numbered JBO61402, with French assay and workshop marks. With signed box and pouch.

Accompanied by Certificate of Authenticity from Van Cleef & Arpels, dated December 11, 2012.

US\$ 10,000-15,000



PROPERTY FROM THE COLLECTION OF MARY DUNCAN SANFORD

LOTS 13-20

The charmed life of Mary Duncan Sanford can truly be seen as an American Dream, spanning every decade of the 20th century.

Born in 1895, Mary took to the Broadway stage as a teenager and appeared in numerous shows before entering Cornell University. Her college career was short-lived, however, when, after only one year, Mary headed West to study acting and pursue a career in film. Mary's first act defines old Hollywood glamour, as she played first in silent films and later "talkies", sharing screen time with movie stars like Marion Davies and Katharine Hepburn. Beautiful and stylish, Mary Duncan typified the 1930s screen siren, usually photographed in gorgeous gowns and fabulous jewels.

It was Davies who would introduce Mary Duncan to the love of her life, international polo player Stephen "Laddie" Sanford. They were married in 1933 whereupon Mary retired from acting. Mary's second act as wife, philanthropist, hostess and socialite took her to the polo fields and ballrooms of Palm Beach where she remained for the rest of her life. Mary reigned over Palm Beach with grace and

style, entertaining in her fabulous home, "Los Incas", where the guest list included such luminaries as Rose Kennedy, CZ Guest, the Duke and Duchess of Windsor, Estée Lauder and Doris Duke. Mary also chaired many charity galas and events, most notably the "Polo Ball" which she founded to support Cancer research. Her beautiful collection of jewels reflected her glamorous beginnings and perfectly suited her real-life role of society grande dame.

Active and fit throughout her life, Mary shared her husband's passion for sports and participated alongside him always, rather than simply attending as a spectator. Whether equestrian sports, golf, daily swims, deep-sea fishing or African safaris, Mary rode shoulder to shoulder with Laddie in every way. In 1963, David Field ended his article on Mary for *The Palm Beacher* with this: "Is Mary Sanford a socialite?...A dowager?...A philanthropist?...A twist dancer?...A horsewoman?...A wife?...A golfer?...An art patron?... Answer: she's all of these. That's why she's Mary Sanford."

The present collection is being offered across our Fine and Magnificent Jewels sales on December 9th and 10th.



Mary Duncan Sanford wearing lot 18

13

PROPERTY FROM THE COLLECTION OF MARY
DUNCAN SANFORD

DIAMOND RING

Designed as a scroll, centering a square emerald-cut diamond, accented by baguette, round and single-cut diamonds, size 3¼.

US\$ 5,000-7,000



14

PROPERTY FROM THE COLLECTION OF MARY
DUNCAN SANFORD

PAIR OF DIAMOND EARCLIPS

Of fringe and scroll design, set with cascading round, baguette and marquise-shaped diamonds.

US\$ 4,000-6,000



PROPERTY FROM THE COLLECTION OF MARY
DUNCAN SANFORD

DIAMOND DOUBLE CLIP-BROOCH

Designed as stylized bow, set with numerous
round and baguette diamonds, *detachable for
wear as two clip-brooches.*

US\$ 8,000-12,000



Mary Duncan Sanford wearing lot 14, with her husband,
Stephen "Laddie" Sanford

PROPERTY FROM THE COLLECTION OF MARY
DUNCAN SANFORD

DIAMOND RING

Of architectural design, set with marquise, round,
baguette and single-cut diamonds, size 5½;
circa 1935.

US\$ 5,000-7,000



PROPERTY FROM THE COLLECTION OF MARY
DUNCAN SANFORD

**PAIR OF GOLD, SAPPHIRE AND
DIAMOND EARCLIPS, VAN CLEEF &
ARPELS**

Composed of fluted gold ribbons, accented by
round diamonds and sapphires, *signed Van Cleef
& Arpels NY, numbered 3V48.5 and 3V48.6.*

US\$ 1,500-2,000





18

PROPERTY FROM THE COLLECTION OF MARY
DUNCAN SANFORD

DIAMOND NECKLACE

Supporting a fringe of emerald-cut diamonds,
suspended from a line of baguette diamonds,
accented by round diamonds, *length 14¾ inches.*

US\$ 40,000-60,000

PROPERTY FROM THE COLLECTION OF MARY
DUNCAN SANFORD

**RUBY AND DIAMOND RING, SEAMAN
SCHEPPS**

Centering a cabochon ruby measuring
approximately 28.0 x 20.4 x 11.2 mm, accented
by old mine-cut diamonds, size 6, *partially signed*
Schepps, numbered 70003.

US\$ 8,000-12,000



PROPERTY FROM THE COLLECTION OF MARY
DUNCAN SANFORD

**RUBY, EMERALD, CULTURED PEARL
AND DIAMOND SUITE**

Of foliate design, comprising a bracelet set with carved rubies and emeralds, accented by cultured pearls measuring approximately 4.9 to 3.4 mm, highlighted with old European and single-cut diamonds, and ruby and emerald beads inset with round diamonds, *internal circumference 7 inches, several diamonds missing and one small carved colored stone missing*; a matching clip-brooch, *one small diamond missing*; and a pair of earclips *en suite* suspending two cultured pearls measuring approximately 8.8 to 8.5 mm, topped with two additional cultured pearls measuring approximately 8.4 to 8.3 mm; 1930s.

US\$ 15,000-25,000



 PROPERTY OF A LADY

**PAIR OF GOLD, SILVER AND ENAMEL
EARCLIPS, JAR, PARIS**

Designed as a pair of almond blossoms, composed of sculpted silver petals applied with pink enamel, centering gold pistils, *signed JAR Paris, numbered 96, with French assay and workshop marks.* With signed pouch.

These earclips by JAR are a special rendition of almond flowers. They were fashioned after the artist created his first piece of Judaica, a menorah he made for the Jewish Museum of Rome in a joint exhibition with the Vatican. The only piece of commissioned original art for the exhibition, Mr. Rosenthal created the menorah in the form of almond branches and pink enameled almond flowers in the same manner as the earclips offered here. The artist grew up in a Jewish household with fond childhood memories of his grandmother's almond cookies, which were the original inspiration for the piece. A later conversation with a rabbi revealed that the almond tree was actually a significant symbol in Judaica, representing the tree of life, and possibly the original form by which the menorah was inspired. The serendipitous connection makes these earclips both a unique and personal example of JAR's design repertoire.

US\$ 4,000-6,000



 PROPERTY OF A BEVERLY HILLS COLLECTOR
**GOLD 'TUBOGAS' BRACELET-WATCH,
BULGARI**

The coiled gold tubogas bracelet terminating in a round black dial with gold baton indicators, quartz movement, gross weight approximately 94 dwts, *internal circumference expandable, case, case back and bracelet signed Bulgari, numbered BB 19 1T and P.259428, case back with Swiss hallmarks, bracelet with maker's, Italian registry and assay marks.*

US\$ 7,000-9,000

PROPERTY OF A LADY

**GOLD AND DIAMOND NECKLACE,
BOUCHERON, FRANCE**

The textured gold link chain, set at intervals with lozenge-shaped gold links decorated with round diamonds, gross weight approximately 96 dwts, length 29 inches, chain detachable into two 14½-inch segments for a variety of wear, signed Boucheron Paris, numbered 59970, with French assay marks. With signed pouch.

US\$ 12,000-15,000





24

PROPERTY OF A LADY, SCOTTSDALE, ARIZONA
DIAMOND RING

Centering a pear-shaped diamond weighing 2.13 carats, flanked by tapered baguette diamonds, size 6½.

Accompanied by GIA report no. 6204589415 dated September 18, 2019 stating that the diamond is D color, Internally Flawless.

US\$ 12,000-15,000



25

PROPERTY OF A LADY
**WOOD, SAPPHIRE AND DIAMOND
BANGLE-BRACELET**

Composed of polished wood, set at intervals with square-cut sapphires, framed and accented by lines of old European and single-cut diamonds, *internal circumference 8¼ inches.*

Please note this property cannot be shipped internationally due to endangered species materials.

© US\$ 4,000-6,000

**PAIR OF DIAMOND AND JET 'ZINGARA'
EARCLIPS, VHERNIER**

Designed as hoops, the exteriors pavé-set with round diamonds, the interiors set with polished segments of jet, *signed Vhernier, numbered 20B, with Italian registry and assay marks. With signed pouch.*

US\$ 10,000-15,000



**PROPERTY FROM A FAMILY COLLECTION
SAPPHIRE AND DIAMOND RING**

Centering a rectangular-cut sapphire weighing approximately 3.90 carats, within a decorative mounting set with baguette, round, old European and single-cut diamonds, *size 6¼.*

Accompanied by AGL report no. 1103694 dated September 11, 2019 stating that the sapphire is of Ceylon origin, with no indications of heating.

US\$ 8,000-12,000





□ 28 SOLD WITHOUT RESERVE

PROPERTY OF A BEVERLY HILLS COLLECTOR
**PAIR OF TURQUOISE AND DIAMOND
PENDANT-EARCLIPS**

Set with four turquoise cabochons, framed by round diamonds, accented by marquise-shaped diamonds, *pendants detachable*.

US\$ 5,000-7,000

29

PROPERTY FROM A PRIVATE COLLECTION,
WASHINGTON D.C.

**CORAL, ONYX AND DIAMOND
BRACELET, LACLOCHE FRÈRES**

Designed as a torsade composed of three strands of coral beads measuring approximately 5.4 to 3.9 mm, the clasp of woven design set with a coral cabochon, polished onyx, and old European, single and rose-cut diamonds, *length 7¼ inches, signed Lacloche Frères; circa 1930. With signed box.*

Please note this property cannot be shipped internationally due to endangered species materials.

● US\$ 5,000-7,000



PROPERTY FROM A PRIVATE COLLECTION,
WASHINGTON D.C.

**CORAL, SEED PEARL AND DIAMOND
NECKLACE AND PAIR OF EARRINGS**

The necklace composed of coral beads measuring approximately 8.3 to 5.3 mm, accented by two geometric plaques set with old European, single-cut and baguette diamonds, splitting into two strands at the front spaced with seed pearls, *length 14¹/₄ inches*; together with a pair of pendant-earrings set with coral cabochons and rose-cut diamonds, suspending drop-shaped coral; *circa 1925, the earrings with later post fittings*. With 37 additional coral beads.

Please note this property cannot be shipped internationally due to endangered species materials.

© US\$ 8,000-12,000



PROPERTY FROM A DISTINGUISHED FAMILY
COLLECTION

DIAMOND NECKLACE

Composed of four rows of numerous baguette
diamonds, *internal circumference 15 inches.*

US\$ 20,000-30,000



PROPERTY FROM A PRIVATE COLLECTION,
NEW YORK, NEW YORK

SAPPHIRE AND DIAMOND RING, GRAFF

Centering an oval-shaped sapphire weighing 4.06 carats, set between two heart-shaped diamonds, size 6, signed Graff, numbered GR49470. With signed box.

Accompanied by AGL report no. 1103451 dated September 11, 2019 stating that the sapphire is of Madagascar origin, with no indications of heating.

US\$ 12,000-18,000



SAPPHIRE AND DIAMOND BROOCH, VERDURA

Of stylized design reminiscent of feathers, pavé-set with old European and single-cut diamonds, highlighted with tapered baguette and calibré-cut sapphires, signed Verdura.

US\$ 20,000-30,000



**PAIR OF DIAMOND, ONYX AND RUBY
'AGRAFE' EARCLIPS, CARTIER**

The surmounts designed as loops set with round diamonds, each suspending two pendants supporting carved onyx beads, accented with reverse-set round rubies, *signed Cartier, numbered 94360B, with Swiss hallmarks.*

US\$ 12,000-15,000



PROPERTY OF A LADY, NEW YORK, NEW YORK

**RED SPINEL, PINK TOURMALINE AND
DIAMOND RING**

Centering an oval-shaped red spinel measuring approximately 10.0 x 9.4 mm, framed by round diamonds, set within a carved pink tourmaline, *size 4½, with hinged shank, with Italian registry mark.*

Accompanied by AGL report no. 1102683 dated August 5, 2019 stating that the spinel is of Burmese origin, with no indications of heating.

US\$ 20,000-30,000



PROPERTY OF A LADY

DIAMOND LONGCHAIN

Designed as a long line of round diamonds, *length*
24¹/₈ inches.

US\$ 25,000-35,000



PROPERTY FROM A MIDWEST ESTATE

DIAMOND RING

Centering an emerald-cut diamond weighing 5.92 carats, set between two tapered baguette diamonds, size 6.

Accompanied by GIA report no. 2201581735 dated September 12, 2019 stating that the diamond is M color, SI1 clarity.

US\$ 15,000-20,000



RUBY AND DIAMOND BRACELET

Set with alternating pairs of pear-shaped rubies and diamonds, bordered by round diamonds, length 6¾ inches.

Accompanied by AGL report no. 1094393 dated August 13, 2018 stating that the rubies have no indications of heating.

US\$ 15,000-20,000





39

PROPERTY OF A PRIVATE COLLECTION, MIAMI,
FLORIDA

**RUBY AND DIAMOND NECKLACE,
DAVID BIRNBAUM**

Designed as a line of oval-shaped rubies, framed and accented by round diamonds, *unsigned, with workshop mark, length 18¼ inches*. With signed pouch.

Accompanied by a photocopy of GIA report no. 2193933872 dated December 27, 2018 stating that the five rubies tested are of Burmese origin, with indications of heating.

US\$ 35,000-55,000

PROPERTY OF A BEVERLY HILLS COLLECTOR

**CULTURED PEARL AND DIAMOND
NECKLACE**

Composed of 62 graduated black cultured pearls measuring from approximately 14.5 to 10.6 mm, completed by a boule-shaped clasp set with round diamonds, *length 31¾ inches, detachable into three sections for variety of wear.*

US\$ 6,000-8,000



DIAMOND 'LEGACY' RING, TIFFANY & CO., FRANCE

Centering a cushion-cut diamond weighing 2.31 carats, framed and accented by round diamonds, size 6, signed *Tiffany & Co.*, numbered 27974503, with French assay and maker's marks.

Accompanied by *Tiffany & Co.* diamond certificate no. 27974503/J11140334 stating that the diamond is G color, VVS1 clarity.

US\$ 12,000-15,000



 42 SOLD WITHOUT RESERVE

PROPERTY OF A BEVERLY HILLS COLLECTOR

PAIR OF PINK SAPPHIRE, WHITE SAPPHIRE AND DIAMOND PENDANT-EARCLIPS

Suspending hoops pavé-set with rose-cut pink sapphires, encircled with a spiraled line of round diamonds, terminating in a pear-shaped rose-cut white sapphire. Fitted with retractable posts.

US\$ 5,000-7,000



PROPERTY OF A DISTINGUISHED COLLECTOR

**CULTURED PEARL AND DIAMOND
NECKLACE, DAVID WEBB**

Composed of three strands of cultured pearls measuring from approximately 13.7 to 10.0 mm, the gold clasp of woven design set with round diamonds, *internal circumference 18 inches, signed David Webb.*

US\$ 8,000-12,000



PROPERTY OF A LADY, CINCINNATI, OHIO

**PAIR OF LAPIS LAZULI AND DIAMOND
EARCLIPS**

Centering lapis lazuli cabochons, within gold
ropetwist frames, accented by round diamonds.

US\$ 4,000-6,000



PROPERTY OF A BEVERLY HILLS COLLECTOR

PAIR OF DIAMOND AEARCLIPS

Composed of articulated hoops set with
numerous round diamonds.

US\$ 6,000-8,000

PROPERTY FROM THE COLLECTIONS OF CHARLOTTE AND ANNE FORD

LOTS 46-61

Sotheby's is honored to present a highly personal selection of jewels from the important collections of Charlotte Ford and Anne Ford.

Born in Detroit, Charlotte and Anne were the only daughters of Henry Ford II and Anne McDonnell Ford. Their father, Henry Ford II, was the eldest grandson of Henry Ford, the venerable founder of Ford Motor Company, and the eldest son of Edsel and Eleanor Ford, renowned collectors and major art benefactors in Detroit. The sisters grew up on the picturesque shores of Lake St. Clair in Grosse Pointe, Michigan, while their father served as the President and Chief Executive Officer of the Ford Motor Company from 1945 through 1970, transitioning to Chairman until he retired in 1981.

From their mother Anne, daughters Charlotte and Anne were exposed to culture, style and high society. Born Anne McDonnell, their mother was part of the prominent New York family of James F. McDonnell. Her upbringing in Rye, New York was complemented by lavish residences in Manhattan and Southampton, the latter being the location of Anne McDonnell and Henry Ford II's wedding in 1940. Anne was deeply engaged in the arts, serving on the White House Fine Arts Committee for the Eisenhower and Kennedy administrations. In Michigan, she was actively involved with the Detroit Institute of Arts and the Detroit Opera. Mrs. McDonnell Ford would eventually be elected to the board of the Metropolitan Museum of Art—one of the first women to serve in such a capacity. Always stylish, Anne McDonnell Ford was named one of the ten best-dressed women in the world in 1956



Charlotte and Anne Ford

by the International Best Dressed List, and was inducted into the Fashion Hall of Fame in 1960.

After a societal debut fête in Grosse Pointe labeled by a Hearst columnist as the 'party of the century', Charlotte moved to New York City at the age of 18. Anne would also move to New York at that time and each sister enjoyed socialite status in their new home. Both women, like their mother, were known for their exquisite taste in fashion and named to notable best dressed lists.



Charlotte and Anne Ford

Both sisters are accomplished authors: Charlotte penning *Etiquette: Charlotte Ford's Guide to Modern Manners* and its successor, *21st Century Etiquette: Charlotte Ford's Guide to Manners for the Modern Age*, and Anne publishing her acclaimed memoir, *Laughing Allegra* and *On Their Own: Creating an Independent Future for Your Adult Child with Learning Disabilities and ADHD*. In addition to her significant writings on the subject, Anne served as Chairman of the National Center for Learning Disabilities from 1989 through 2001. Charlotte has proudly served on the Board of Trustees of

New York Presbyterian Hospital and currently holds the position of Co-Vice Chair—the highest-ranking woman on the board.

Throughout their lives, Charlotte and Anne have surrounded themselves with superb examples of both decorative and fine art, exhibiting consummate tastes for their time. They have applied a similar level of discernment to their jewelry collections. In part inherited and in part deliberate, they comprise important gemstones—most notably colored diamonds and natural pearls—and superlative design. Anchored by classic examples by Van Cleef & Arpels, David Webb, Schlumberger for Tiffany & Co., and Bulgari, the collections are unified by a refined elegance that reflects the sophistication of these two notable members of a highly lauded American family.

The remarkable collections of Charlotte and Anne Ford will be offered across our December 9 and 10 sales of Fine and Magnificent Jewels.



46

PROPERTY FROM THE COLLECTIONS OF
CHARLOTTE AND ANNE FORD

**THREE PAIRS OF GEM-SET EARCLIPS,
VERDURA**

Each designed as a pair of seashells, one composed of carved gray chalcedony studded with cultured half-pearls, another pair featuring carved aventurine quartz accented with cabochon amethysts, and a third pair of carved amber, accented by round citrines, *each signed Verdura, with Trianon workshop marks*. With two signed boxes.

US\$ 6,000-8,000

PROPERTY FROM THE COLLECTIONS OF
CHARLOTTE AND ANNE FORD

DIAMOND BROOCH, DAVID WEBB

Designed as a bow pavé-set with round diamonds,
bordered by a gold fringe, *signed David Webb.*

US\$ 5,000-7,000





48

PROPERTY FROM THE COLLECTIONS OF
CHARLOTTE AND ANNE FORD

**CULTURED PEARL AND DIAMOND
NECKLACE, TIFFANY & CO.**

Composed of a line of 31 cultured pearls
measuring approximately 14.5 to 10.5 mm,
completed with a decorative clasp set with round
and pear-shaped diamonds, *length 17 inches,*
signed Tiffany & Co.

US\$ 5,000-7,000

PROPERTY FROM THE COLLECTIONS OF
CHARLOTTE AND ANNE FORD

**SAPPHIRE, ENAMEL AND DIAMOND
BROOCH, CARTIER**

Designed as the burgee of the Royal Thames
Yacht Club, set with calibr -cut sapphires,
single-cut diamonds, and accented with blue and
reddish orange enamel, *partially signed Cartier*.

US\$ 3,000-4,000



PROPERTY FROM THE COLLECTIONS OF
CHARLOTTE AND ANNE FORD

**CULTURED PEARL AND DIAMOND
CLIP-BROOCH, CARVIN FRENCH**

Centering a button-shaped cultured pearl
measuring approximately 14.5 by 14.4 mm,
surrounded by radiating lines of round diamonds
terminating in marquis-shaped diamonds, *with
maker's mark for Carvin French*.

*Accompanied by GIA report no. 5201458298
dated August 5, 2019 stating that the pearl is
cultured, saltwater.*

US\$ 5,000-7,000

PROPERTY FROM THE COLLECTIONS OF
CHARLOTTE AND ANNE FORD

**GOLD AND DIAMOND 'PARENTESI'
BRACELET-WATCH, BULGARI**

The round dial pavé-set with single-cut diamonds on a flexible bracelet composed of polished gold modular links, pavé-set at intervals with round diamonds, *internal circumference expandable, signed Bulgari, caseback numbered BJ 01 G 68195, with maker's, Italian assay and registry marks, one diamond missing.*

LITERATURE

For similar examples of 'Parentesi' watches, see Bulgari by Daniela Mascetti and Amanda Triossi, page 137.

US\$ 5,000-7,000



PROPERTY FROM THE COLLECTIONS OF
CHARLOTTE AND ANNE FORD

**GOLD AND DIAMOND 'PARENTESI'
BRACELET, BULGARI**

The gold modular links highlighted at intervals with pavé-set round diamonds, gross weight approximately 56 dwts, *internal circumference expandable, signed Bulgari, numbered BA6909, with Italian assay and registry marks.*

US\$ 4,000-6,000



PROPERTY FROM THE COLLECTIONS OF
CHARLOTTE AND ANNE FORD

**GOLD, GEM-SET AND DIAMOND CLIP,
CARTIER, FRANCE**

Designed as a bird composed of textured gold, a wing pavé-set with round and single-cut diamonds, the head topped with a ruby cabochon, the tail feathers accented with cabochon sapphires, and with a marquise-shaped emerald eye, *signed Cartier Inc., France, numbered 2996, with French export and maker's marks.*

US\$ 4,000-6,000



PROPERTY FROM THE COLLECTIONS OF
CHARLOTTE AND ANNE FORD

**RUBY, SAPPHIRE AND DIAMOND
'GAZELLE' CLIP-BROOCH,
SCHLUMBERGER FOR TIFFANY & CO.**

Designed as stylized gazelle pavé-set with round diamonds, with marquise-shaped cabochon sapphire eyes, holding a branch decorated with pear-shaped rubies, with gold rope-twist horns, signed *Schlumberger Tiffany*.

US\$ 8,000-12,000



PROPERTY FROM THE COLLECTIONS OF
CHARLOTTE AND ANNE FORD

**PERIDOT AND DIAMOND CLIP-
BROOCH, JEAN SCHLUMBERGER, PARIS**

Centered on an oval-shaped peridot, set within a domed surround of round peridot, embellished with three floral motifs set with single-cut diamonds, signed *Schlumberger, Paris*, with French assay and workshop marks.

LITERATURE

A brooch of similar design set with aquamarines is illustrated in The Jewels of Schlumberger, published in conjunction with the exhibition "Un diamant dans la ville" held at the Musée des Arts Décoratifs, Paris, 1996, p. 38.

US\$ 7,000-9,000





56

PROPERTY FROM THE COLLECTIONS OF
CHARLOTTE AND ANNE FORD

**PAIR OF PINK TOURMALINE, PERIDOT
AND DIAMOND PENDANT-EARCLIPS**

The surmounts centering oval-shaped pink tourmalines, enveloped in curved lines of round diamonds terminating in oval-shaped peridots, suspending detachable fringes of similarly-cut peridot, round diamonds and pink tourmalines, *one diamond missing*.

US\$ 8,000-12,000

PROPERTY FROM THE COLLECTIONS OF
CHARLOTTE AND ANNE FORD

**TWO PAIRS OF GEM-SET EARCLIPS,
VERDURA**

Comprising one pair composed of polished nephrite, inset with emerald-cut citrines, cultured half pearls and cabochon amethysts and rubies, and another pair set with cushion-cut amethysts atop cushion-cut aquamarines, *each signed Verdura*.

US\$ 4,000-6,000





PROPERTY FROM THE COLLECTIONS OF
CHARLOTTE AND ANNE FORD

**FRESHWATER CULTURED PEARL AND
DIAMOND BROOCH, RUSER**

Designed as a penguin, a freshwater cultured pearl forming the body, the head and wings pavé-set with round diamonds, the eye set with a deep brown glass cabochon, perched atop a freshwater cultured pearl, *signed Ruser*.

US\$ 1,200-1,500

PROPERTY FROM THE COLLECTIONS OF
CHARLOTTE AND ANNE FORD

JADEITE AND DIAMOND RING

Centering a jadeite cabochon measuring approximately 17.3 x 12.3 x 5.9, framed and accented by round and marquise-shaped diamonds, size 6.

Accompanied by GIA report no. 1206458283 dated July 23, 2019 stating that the jadeite is natural, with no indications of impregnation.

US\$ 8,000-12,000





60

PROPERTY FROM THE COLLECTIONS OF
CHARLOTTE AND ANNE FORD

**ROCK CRYSTAL, SAPPHIRE, DIAMOND
AND ENAMEL BROOCH**

Composed of two rock crystal links accented with
geometric plaques pavé-set with round diamonds
and two bullet-shaped diamonds, embellished
with sapphire cabochons and blue enamel.

US\$ 6,000-8,000



61

PROPERTY FROM THE COLLECTIONS OF
CHARLOTTE AND ANNE FORD

**CULTURED PEARL, ROCK CRYSTAL AND
DIAMOND SAUTOIR**

Designed as torsades of cultured pearls, spaced
by carved rock crystal, accented by round
diamonds, supporting a detachable pendant
designed as a tassel, *length 32½ inches,*
detachable into one 17-inch and two 7¾-inch
sections for variety of wear.

US\$ 6,000-8,000

GOLD AND DIAMOND NECKLACE

Centering a domed band pavé-set with round diamonds, on a gold tubogas necklace, gross weight approximately 79 dwts, *length 18 inches*.

US\$ 5,000-7,000



63



PROPERTY OF A LADY, CINCINNATI, OHIO
**PAIR OF SAPPHIRE, EMERALD AND
DIAMOND EARCLIPS, DAVID WEBB**

Of floral design, centered on cabochon sapphires, decorated with round and single-cut diamonds, accented by cabochon emeralds, *signed David Webb*.

US\$ 8,000-12,000



64

**GOLD AND DIAMOND BRACELET,
VAN CLEEF & ARPELS, FRANCE**

The links designed as a series of stylized gold branches, accented by round diamonds, gross weight approximately 33 dwts, *length 6⁷/₈ inches, signed VCA, numbered 103894, with French assay and workshop marks.*

US\$ 8,000-12,000

PROPERTY OF A LADY

**RUBY, SAPPHIRE EMERALD AND
DIAMOND BRACELET, OSCAR HEYMAN
& BROTHERS**

Adorned with six bird motifs set with cabochon rubies, the feathers featuring calibr -cut sapphires and emeralds, the eyes set with round diamonds, further accented by foliate motifs set with cabochon emeralds and sapphires, against a ground of round diamonds, *length 7 inches, numbered 803893, with maker's mark.*

Accompanied by original sketch from Oscar Heyman & Brothers.

US\$ 40,000-60,000



OSCAR HEYMAN & BROTHERS, INC.



803893

Original sketch by Oscar Heyman & Brothers

EMERALD AND DIAMOND RING

Centering an emerald-cut emerald weighing 15.75 carats, flanked by modified triangle-shaped diamonds, size 6.

Accompanied by AGL report no. CS 44980 dated May 27, 2011 stating that the emerald is of Zambian origin, clarity enhancement: faint to moderate.

US\$ 60,000-80,000



PROPERTY FROM A PRIVATE FAMILY
COLLECTION, MIAMI, FLORIDA

RUBY AND DIAMOND RING, NARDI

Centering an octagonal-shaped ruby weighing 5.01 carats, flanked by two half-moon-shaped diamonds, highlighted with round diamonds, size 6¼, signed Nardi.

Accompanied by AGL report no. 1103457 dated September 9, 2019 stating that the ruby is of Burmese origin, with indications of heating, clarity enhancement: insignificant.

Accompanied by GRS report no. GRS2005-050977 dated May 25, 2005 stating that the ruby is of Burmese origin.

US\$ 40,000-60,000



**PAIR OF RUBY AND DIAMOND
EARCLIPS, VAN CLEEF & ARPELS,
FRANCE**

Designed as hoops, featuring clusters of round rubies, bordered by round diamonds, the reverse with textured gold detailing, signed VCA, with French assay and maker's marks.

US\$ 20,000-30,000





**PAIR OF GOLD AND DIAMOND
EARCLIPS, CARTIER**

Designed as hoops, decorated with round diamonds, *partially signed Cartier, numbered D63934, with French assay and maker's marks.*

US\$ 5,000-7,000

**YELLOW-ORANGE SAPPHIRE AND
DIAMOND RING, TIFFANY & CO.**

Centering a cushion-cut yellow-orange sapphire weighing approximately 11.30 carats, set within an openwork foliate mounting highlighted with round diamonds, *size 6¼, signed Tiffany & Co., numbered 60596859.*

Accompanied by SSEF report no. 100855 dated June 26, 2018 stating that the sapphire has indications of heating.

US\$ 20,000-30,000



PROPERTY FROM A PRIVATE COLLECTION,
NEW YORK, NEW YORK

SAPPHIRE RING

Featuring a cushion-cut sapphire weighing 6.45 carats, size 6½.

Accompanied by AGL report no. 1103450 dated September 9, 2019 stating that the sapphire is of Burmese origin, with no indications of heating.

US\$ 35,000-55,000



**SAPPHIRE AND DIAMOND BRACELET,
VAN CLEEF & ARPELS, FRANCE**

Composed of clusters of cabochon sapphires, spaced by scrolls of round diamonds, length 7 inches, signed V.C.A., numbered 16.540, with French assay and maker's marks. With signed box.

US\$ 15,000-20,000



PROPERTY OF A PRIVATE COLLECTOR

**PAIR OF NATURAL PEARL AND
DIAMOND EARCLIPS**

The garland style surmounts set with old mine, old European and single-cut diamonds, suspending gray drop-shaped natural pearls measuring approximately 8.8 x 8.7 mm and 8.4 x 8.2 mm, the base of each pearl inset with a single-cut diamond. Fitted with posts.

Accompanied by GIA report no. 5191529261 dated August 14, 2018 stating that the pearls are natural, saltwater.

US\$ 6,000-8,000



74

**EMERALD AND DIAMOND RING,
VAN CLEEF & ARPELS**

Centering a cabochon emerald weighing approximately 5.90 carats, framed and accented by round diamonds, size 7½, signed Van Cleef & Arpels, numbered N.Y. 44032.

US\$ 15,000-20,000



PROPERTY FROM A PRIVATE PENNSYLVANIA
COLLECTION

SAPPHIRE RING

Set with a round sapphire weighing 17.50 carats,
size 6¾.

*Accompanied by AGL report no. 1102463 dated
July 29, 2019 stating that the sapphire is of Ceylon
origin, with no indications of heating.*

*Accompanied by AGTA report no. 96017104
dated July 2, 2001 stating that the sapphire is of
Burmese origin, with no indications of heating.*

US\$ 30,000-40,000



PROPERTY OF A LADY

GOLD BRACELET, TIFFANY & CO.

Composed of gold heart-shaped curb links, gross
weight approximately 54 dwts, length 7 inches,
signed Tiffany & Co.

US\$ 4,000-6,000



PROPERTY FROM A PRIVATE COLLECTION,
NEW YORK, NEW YORK

GOLD AND DIAMOND EVENING BAG

Composed of basket-woven gold measuring approximately 7 x 3½ x 1⅞ inches, accented by round and single-cut diamonds, opening to reveal a mirror and a suede interior, gross weight approximately 234 dwts.

US\$ 10,000-15,000





78

**PINK SAPPHIRE AND AMETHYST SUITE
OF 'HAWAII' JEWELS, VAN CLEEF &
ARPELS**

The necklace featuring three floral motifs, centering clusters of round pink sapphires, the petals set with oval-shaped amethysts, on a double snake chain accented with gold leaves, and a similarly-set ring with an articulated flowerhead, the central floral motif in the necklace

detachable for wear as a clip-brooch, the smaller motifs detachable for wear as earclips, necklace length 15¾ inches, ring size 6½, necklace signed Van Cleef & Arpels, ring, earclips and clip-brooch signed VCA, each piece numbered, the necklace, earclips and clip-brooch with French assay and workshop marks, the ring with French import mark.

US\$ 25,000-35,000

PROPERTY FROM THE ESTATE OF
SUSAN S. DILLON

**GOLD AND DIAMOND CUFF-BRACELET,
BUCCELLATI**

Designed as a wide brushed gold cuff, adorned with lozenge-shaped clusters of round diamonds, gross weight approximately 70 dwts, *internal circumference 6 $\frac{7}{8}$ inches, signed Buccellati, Italy, numbered 2701, with Italian registry mark, one diamond missing.* With signed box.

US\$ 20,000-30,000



PROPERTY FROM THE ESTATE OF
SUSAN S. DILLON

**GOLD AND DIAMOND CUFF-BRACELET,
BUCCELLATI**

Designed as a wide brushed gold cuff, adorned with lozenge-shaped clusters of round diamonds, gross weight approximately 73 dwts, *internal circumference 6 $\frac{7}{8}$ inches, signed Buccellati, Italy, with Italian registry mark.* With signed box.

US\$ 20,000-30,000



**GOLD AND DIAMOND NECKLACE,
VAN CLEEF & ARPELS**

Composed of textured oval-shaped gold links, the central link accented by round diamonds, gross weight approximately 31 dwts, length 14¾ inches, signed VCA, numbered 4K360.1.

US\$ 5,000-7,000



82

PROPERTY OF A LADY, CINCINNATI, OHIO
**GOLD, RUBY AND DIAMOND EARCLIPS,
BUCCELLATI**

The openwork hoops set with oval-shaped rubies, accented by round diamonds, *signed M. Buccellati Italy, with Italian registry marks*. Fitted with posts.

US\$ 10,000-15,000



83

PROPERTY OF A LADY, CINCINNATI, OHIO
GOLD, RUBY AND DIAMOND BRACELET

Composed of fluted gold links, centering a curved line of round rubies, accented by round diamonds, *length 6¼ inches*. With extra link.

US\$ 5,000-7,000





84

**GOLD NECKLACE, VAN CLEEF &
ARPELS, FRANCE**

Designed as a fringe of gold chains, terminating in gold drops, gross weight approximately 68 dwts, length 15¼ inches, signed VCA, numbered BL 36682, with French assay and workshop marks.

Accompanied by a Certificate of Authenticity from Van Cleef & Arpels dated July 27, 2001.

US\$ 6,000-8,000

85 No Lot



PROPERTY OF A PRIVATE COLLECTOR, ESTER,
ALASKA

**PAIR OF DIAMOND AND RUBY CLIP-
BROOCHES**

Designed as two flowers, pavé-set with round and
single-cut diamonds, the pistils set with calibré-
cut rubies.

US\$ 5,000-7,000



PROPERTY FROM THE COLLECTION OF
KATHERINE GREGORY THOMAS

EMERALD AND DIAMOND RING

Set with an emerald-cut emerald weighing
approximately 8.00 carats, framed by round and
marquise-shaped diamonds, size 5¾.

*Accompanied by AGL report no. 1101594 dated
June 26, 2019 stating that the emerald is of
Colombian origin, clarity enhancement: minor,
type: traditional.*

US\$ 30,000-50,000

**DIAMOND 'SNOWFLAKE' RING,
VAN CLEEF & ARPELS, FRANCE**

Designed as an openwork band featuring snowflake motifs, set throughout with round diamonds, size 6¾, signed Van Cleef & Arpels, numbered JH005019, with French assay and partial workshop marks. With signed box.

Accompanied by a Certificate of Authenticity from Van Cleef & Arpels, dated July 8, 2019.

US\$ 28,000-32,000





89

**THREE-COLOR GOLD AND DIAMOND
'TRINITY' NECKLACE, CARTIER**

Composed of circular yellow, white and pink gold links, two hoops accented by round diamonds, length 17½ inches, signed Cartier, numbered 65267 C.

US\$ 13,000-18,000

PROPERTY FROM A PRIVATE COLLECTION,
GREENWICH, CONNECTICUT

**FANCY INTENSE YELLOW DIAMOND
AND DIAMOND 'TROMBINO' RING,
BULGARI**

Centering a Fancy Intense Yellow emerald-cut diamond weighing 3.40 carats, flanked by lines of baguette diamonds, further adorned with round diamonds, size 5½, signed *Bulgari*.

Accompanied by two GIA reports:

No. 11376768 dated October 21, 2019 stating that the diamond is Fancy Intense Yellow, Natural Color, VVS1 clarity.

No. 11376768 dated December 12, 2000 stating that the diamond is Fancy Intense Yellow, Natural Color, Internally Flawless.

US\$ 35,000-55,000



**PAIR OF DIAMOND AND COLORED
DIAMOND EARCLIPS, VAN CLEEF &
ARPELS**

Designed as a pair of flowers, each centering an emerald-cut diamond, the petals set with round diamonds and diamonds of yellow hue, signed *Van Cleef & Arpels*, numbered 146178, with French import and maker's marks. Fitted with posts.

Please note that the diamonds of yellow hue have not been tested for natural origin of color.

US\$ 20,000-30,000



92

PROPERTY FROM A NEW YORK COLLECTION
**CULTURED PEARL AND COLORED
DIAMOND NECKLACE, VAN CLEEF &
ARPELS**

Composed of 33 round black cultured pearls measuring from approximately 11.8 to 9.3 mm, spaced by rondelles set with round diamonds of yellow hue, centering a button-shaped black cultured pearl measuring approximately 12.6 mm, framed by round diamonds of yellow hue, suspending cascading similarly-hued round, marquise and pear-shaped diamonds, terminating in two drop-shaped black and white cultured pearls each measuring approximately 15.8 x 12.8 x 12.8 mm, length 15½ inches, with two detachable 1¼ and ¾-inch sections, signed VCA, numbered NY 59240. With signed box.

Please note that the diamonds of yellow hue have not been tested for natural origin of color.

US\$ 25,000-35,000



PROPERTY OF A BEVERLY HILLS COLLECTOR

**STAR SAPPHIRE AND DIAMOND RING,
RUSER**

Featuring a cabochon star sapphire measuring approximately 18.3 x 14.9 x 12.9 mm, framed and accented by round diamonds, *size 5¼, signed Ruser.*

Accompanied by AGL report no. 1103615 dated September 13, 2019 stating that the star sapphire is of Ceylon origin, with no indications of heating.

US\$ 20,000-30,000



PROPERTY OF A BEVERLY HILLS COLLECTOR

**NATURAL PEARL, CULTURED PEARL
AND DIAMOND BRACELET**

Centering a natural pearl measuring approximately 8.6 x 8.5 mm, additionally featuring two cultured pearls measuring approximately 8.4 and 8.1 mm, within an openwork geometric surround set with numerous old European, single-cut and rose-cut diamonds, embellished with natural and cultured seed pearls.

Accompanied by GIA report no. 2205568060 dated September 24, 2019 stating that three of the pearls tested are natural, saltwater, and three pearls tested cultured, saltwater.

US\$ 25,000-35,000

DIAMOND LONGCHAIN

Composed of a long line of bezel-set round diamonds, *length 49 inches.*

US\$ 30,000-40,000





96

PROPERTY FROM THE ESTATE OF
SUSAN S. DILLON

**GOLD 'ONDA' CHOKER-NECKLACE,
MARINA B, FRANCE**

Of sprung design, the gold links featuring a scalloped pattern, gross weight approximately 68 dwts, *internal circumference expandable, signed Marina B, numbered C 135, with French assay and workshop marks.* With signed pouch.

US\$ 3,000-5,000



□ 97 SOLD WITHOUT RESERVE

PROPERTY OF A BEVERLY HILLS COLLECTOR

**PAIR OF GILT METAL 'GERANIUM'
EARCLIPS, JAR, PARIS**

Designed as sculpted leaves, *signed JAR Paris, numbered 109, with French workshop mark.* With signed pouch.

US\$ 3,000-5,000

□ 98 SOLD WITHOUT RESERVE

GEM-SET AND DIAMOND BRACELET

Designed as wide band set with numerous floral motifs, carved of gemstones including lapis lazuli, malachite, green and blue chalcedony, carnelian, amethyst, abalone shell, mother-of-pearl, glass and rose quartz, accented by round diamonds, peridot, iolite, yellow sapphires and highlighted with pink tourmaline cabochons, *length 6¾ inches.*

Please note this property cannot be shipped internationally due to endangered species materials.

● US\$ 7,500-10,000



PROPERTY FROM THE ESTATE OF FLORA CAMERON CRICHTON, SAN ANTONIO, TEXAS

LOTS 99-131

Charming, elegant, and beautiful, Flora Cameron Atherton Crichton (1925-2019) dedicated herself to philanthropic and political causes during a lifetime filled with travels around the globe and friendships with some of the world's most interesting and powerful leaders, including several United States senators and presidents. She had homes in Texas, New Mexico and Hawaii, and enjoyed filling them with fascinating friends and the extraordinary works of art that she collected over many years.

Born in Waco, Texas, in 1925, she was the daughter of lumber magnate William Waldo Cameron and Helen Miller Cameron. Following the death of her father in 1939, her mother married Reverend Everett Jones, who became the Bishop of the Episcopal Diocese of West Texas, based in San Antonio. Flora Cameron attended Sweet Briar College, and later served as a trustee of her alma mater. She was active on many boards, including Trinity University (San Antonio, Texas), the School of American Research (Santa Fe, New Mexico), the National Advisory Council of the Georgia O'Keeffe Museum (Santa Fe, New Mexico), and the East-West Center (Honolulu, Hawaii).

She became active in politics from the moment she first cast a ballot in 1948 and her many leadership positions included Vice Chairman of the Texas Republican Party in 1958, Co-Chair of the John Tower

Committee for the U.S. Senate in 1959, Delegate to the Republican Conventions of 1960 and 1964, and Member of the Republican National Finance Committee. She was also a member of the President's Mission to Latin America, headed by Governor Nelson Rockefeller in 1969, and was instrumental in convincing a young George Herbert Walker Bush to enter politics, resulting in a 50-year friendship with the former President and First Lady.

Her interest in culture and the arts led to numerous philanthropic contributions, including the spectacular "Confluence of Civilizations" mural by Mexican artist Juan O'Gorman, given to the city of San Antonio in celebration of its 1968 World's Fair; the Flora Cameron Lecture on Public Affairs at Trinity University (San Antonio, Texas); the William Waldo Cameron Fellowship at the George H. W. Bush Presidential Library, Texas A&M University (College Station, Texas); and shortly before her death, the beautiful oak trees for San Antonio's Hemisfair Park.

Flora Cameron Crichton was married three times— first to attorney Ike Kampmann, then to former HoltCat CEO Holt Atherton, and ultimately to businessman John H. Crichton—and her surviving family members include a daughter, five stepchildren, eighteen grandchildren and thirteen great grandchildren who remember her generosity, sense of humor, and firm beliefs.



Flora Cameron Crichton



99

PROPERTY FROM THE ESTATE OF FLORA
CAMERON CRICHTON, SAN ANTONIO, TEXAS

**PAIR OF AQUAMARINE AND DIAMOND
EARCLIPS, TIFFANY & CO.**

Featuring two emerald-cut aquamarines, adorned
with gold branches, the leaves set with round
diamonds, *signed Tiffany & Co.*

US\$ 5,000-7,000

PROPERTY FROM THE ESTATE OF FLORA
CAMERON CRICHTON, SAN ANTONIO, TEXAS

**GOLD AND DIAMOND CLIP-BROOCH,
BUCCELLATI**

Designed as a sprig of textured gold leaves,
featuring floral motifs set with round and single-
cut diamonds, *signed Buccellati, Italy; circa 1965.*

US\$ 5,000-7,000



PROPERTY FROM THE ESTATE OF FLORA
CAMERON CRICHTON, SAN ANTONIO, TEXAS

**PAIR OF GOLD AND EMERALD
EARCLIPS, SEAMAN SCHEPPS**

Of starburst design, centering two emerald-cut emeralds measuring approximately 15.0 by 12.9 mm and 14.7 by 12.2 mm, *signed Seaman Schepps, with maker's mark; circa 1950.*

US\$ 4,000-6,000



□ **102** SOLD WITHOUT RESERVE

PROPERTY FROM THE ESTATE OF FLORA
CAMERON CRICHTON, SAN ANTONIO, TEXAS

**PAIR OF GOLD, RUBY, EMERALD AND
DIAMOND EARCLIPS, CARTIER**

Designed as starbursts, the central star motif pavé-set with round diamonds, embellished with marquise-shaped rubies and round emeralds, *signed Cartier, numbered N1440, with British import hallmarks; dated 1965.*

US\$ 3,000-4,000



103

103

PROPERTY FROM THE ESTATE OF FLORA
CAMERON CRICHTON, SAN ANTONIO, TEXAS

GOLD NECKLACE, TIFFANY & CO.

Designed as a series of textured gold links, gross weight approximately 85 dwts, length 21¼ inches, with pendant hook, signed Tiffany & Co.

US\$ 4,000-6,000

104

PROPERTY FROM THE ESTATE OF FLORA
CAMERON CRICHTON, SAN ANTONIO, TEXAS

**PAIR OF GOLD AND DIAMOND 'FLAME'
EARCLIPS, SCHLUMBERGER FOR
TIFFANY & CO.**

Designed as two stylized gold flames, accented by round diamonds, signed Tiffany Schlumberger.

US\$ 6,000-8,000



105

PROPERTY FROM THE ESTATE OF FLORA
CAMERON CRICHTON, SAN ANTONIO, TEXAS

**CORAL AND DIAMOND BROOCH,
TIFFANY & CO.**

Of stylized design, featuring fluted carved coral and centering a round diamond, the scalloped terminals pavé-set with round diamonds, with pendant hook, signed Tiffany; circa 1970.

Please note this property cannot be shipped internationally due to endangered species materials.

● US\$ 6,000-8,000

□ 106 SOLD WITHOUT RESERVE

PROPERTY FROM THE ESTATE OF FLORA
CAMERON CRICHTON, SAN ANTONIO, TEXAS

**PAIR OF DIAMOND EARCLIPS,
TIFFANY & CO.**

Designed as knotted ribbons, pavé-set with round
diamonds, *signed Tiffany; 1960s.*

US\$ 3,000-4,000



□ 107 SOLD WITHOUT RESERVE

PROPERTY FROM THE ESTATE OF FLORA
CAMERON CRICHTON, SAN ANTONIO, TEXAS

**PAIR OF GOLD AND DIAMOND
EARCLIPS, VAN CLEEF & ARPELS**

Of door knocker design, featuring lion head
holding hoops accented with round diamonds,
gross weight approximately 27 dwts, *signed VCA,*
numbered 3H27.29; circa 1970.

US\$ 3,000-5,000



108

PROPERTY FROM THE ESTATE OF FLORA
CAMERON CRICHTON, SAN ANTONIO, TEXAS

**GOLD NECKLACE, BUCCELLATI, AND
PAIR OF EARCLIPS**

Comprising a necklace composed of braided gold links, gross weight approximately 93 dwts, *signed Buccellati Italy*; and a pair of earclips designed as reuleaux triangles composed of herringbone links, *unsigned*.

US\$ 5,000-7,000

PROPERTY FROM THE ESTATE OF FLORA
CAMERON CRICHTON, SAN ANTONIO, TEXAS

PAIR OF DIAMOND EARCLIPS, CARTIER

Designed as rounded hoops pavé-set with round diamonds, *signed Cartier, partially numbered.*

US\$ 6,000-8,000



□ 110 SOLD WITHOUT RESERVE

PROPERTY FROM THE ESTATE OF FLORA
CAMERON CRICHTON, SAN ANTONIO, TEXAS

**PAIR OF AQUAMARINE AND DIAMOND
EARCLIPS**

Suspending a pair of emerald-cut aquamarines
from scrolling surmounts set with round,
baguette and single-cut diamonds.

US\$ 3,000-4,000



111

PROPERTY FROM THE ESTATE OF FLORA
CAMERON CRICHTON, SAN ANTONIO, TEXAS

TWO PAIRS OF PENDANT-EARRINGS

One pair suspending cushion-cut amethysts from lines of sugarloaf cabochon sapphires, accented with round and single-cut diamonds; the other pair suspending pearls measuring approximately 7.1 and 7.0 mm, from geometric surmounts set with round and single-cut diamonds; *both pairs circa 1920s*. With screw back fittings.

Please note that the pearls have not been tested for natural origin.

US\$ 3,500-4,500

112

PROPERTY FROM THE ESTATE OF FLORA
CAMERON CRICHTON, SAN ANTONIO, TEXAS

**PAIR OF CORAL AND DIAMOND
EARCLIPS, BUCCELLATI**

Centering two coral cabochons, within two-color
gold foliate frames set with single-cut diamonds,
*signed Buccellati, Italy, with Italian registry and
assay marks.*

*Please note this property cannot be shipped
internationally due to endangered species
materials.*

© US\$ 4,000-6,000



113

PROPERTY FROM THE ESTATE OF FLORA
CAMERON CRICHTON, SAN ANTONIO, TEXAS

**PAIR OF DIAMOND EARCLIPS,
SCHLUMBERGER FOR TIFFANY & CO.,
AND PAIR OF CULTURED PEARL AND
DIAMOND PENDANTS**

The earclips of foliate design, set with round
diamonds, *signed Tiffany Schlumberger*; with
detachable pendants set with drop-shaped
black and white cultured pearls measuring
approximately 13.5 x 12.2 mm and 12.8 x 11.7 mm,
capped by round diamonds, *unsigned*.

US\$ 6,000-8,000



□ 114 SOLD WITHOUT RESERVE

PROPERTY FROM THE ESTATE OF FLORA
CAMERON CRICHTON, SAN ANTONIO, TEXAS

**CORAL AND DIAMOND CLIP-BROOCH,
CARTIER, FRANCE**

Featuring coral discs topped with textured gold
and round and single-cut diamonds, *signed
Cartier Inc., Made in France, numbered 32005.*

*Please note this property cannot be shipped
internationally due to endangered species
materials.*

● US\$ 2,500-3,500



115

PROPERTY FROM THE ESTATE OF FLORA
CAMERON CRICHTON, SAN ANTONIO, TEXAS

**PAIR OF DIAMOND 'RIBBON' EARCLIPS,
SCHLUMBERGER FOR TIFFANY & CO.**

Designed as overlapping ribbons, pavé-set with
round diamonds, *signed Tiffany Schlumberger,*
with French export and workshop marks, one
small diamond missing; circa 1965.

US\$ 5,000-7,000



116

PROPERTY FROM THE ESTATE OF FLORA
CAMERON CRICHTON, SAN ANTONIO, TEXAS

**RUBY AND DIAMOND RING,
BUCCELLATI**

Centered on a round ruby between a pair of oval-
shaped rubies, within a frame of textured open
work platinum accented by single-cut diamonds,
size 8³/₄, signed M. Buccellati, Italy, numbered 96;
circa 1968.

US\$ 5,000-7,000





117

PROPERTY FROM THE ESTATE OF FLORA
CAMERON CRICHTON, SAN ANTONIO, TEXAS

**PAIR OF JADE AND DIAMOND
PENDANT-EARCLIPS, BUCCELLATI**

The surmounts of floral design, set with round and single-cut diamonds, suspending two detachable carved jade pendants, topped by single-cut diamonds, *signed Buccellati, Italy.*

US\$ 6,000-8,000



118

PROPERTY FROM THE ESTATE OF FLORA
CAMERON CRICHTON, SAN ANTONIO, TEXAS

**RUBY AND DIAMOND BROOCH,
CARTIER**

Designed as a cascading cluster of round rubies
and marquise and pear-shaped diamonds, *signed
Cartier, numbered 40001*. Fitted with pendant loop.

US\$ 5,000-7,000

PROPERTY FROM THE ESTATE OF FLORA
CAMERON CRICHTON, SAN ANTONIO, TEXAS

**PAIR OF RUBY AND DIAMOND
EARCLIPS, CARTIER**

Designed as clusters of marquise-shaped rubies
and diamonds, *signed Cartier, partially numbered.*

US\$ 5,000-7,000



120 SOLD WITHOUT RESERVE

PROPERTY FROM THE ESTATE OF FLORA
CAMERON CRICHTON, SAN ANTONIO, TEXAS

**PAIR OF SAPPHIRE AND DIAMOND
EARCLIPS**

Designed as clusters of pear and marquise-
shaped sapphires and diamonds.

US\$ 3,000-4,000

121

PROPERTY FROM THE ESTATE OF FLORA
CAMERON CRICHTON, SAN ANTONIO, TEXAS

**PAIR OF CULTURED PEARL AND
DIAMOND EARCLIPS, STERLÉ, PARIS**

The two cultured pearls measuring approximately
11.8 and 11.5 mm, set within clusters of lozenge
motifs set with round diamonds, *signed Sterlé
Paris, numbered 9.030, with French assay marks;
circa 1972.*

US\$ 4,000-6,000



122

PROPERTY FROM THE ESTATE OF FLORA
CAMERON CRICHTON, SAN ANTONIO, TEXAS

**PAIR OF EMERALD AND DIAMOND
EARCLIPS, DAVID WEBB**

Set with two cabochon emeralds framed with
round and pear-shaped diamonds, *signed Webb.*

US\$ 8,000-12,000



□ 123 SOLD WITHOUT RESERVE

PROPERTY FROM THE ESTATE OF FLORA
CAMERON CRICHTON, SAN ANTONIO, TEXAS

**SEED PEARL AND DIAMOND
NECKLACE, CARTIER**

Designed as a torsade composed of 20 strands of
seed pearls on a ring-shaped clasp pavé-set with
round diamonds, *length 17 inches, signed Cartier,
numbered 32532, with Italian registry mark.*

US\$ 3,000-4,000



PROPERTY FROM THE ESTATE OF FLORA
CAMERON CRICHTON, SAN ANTONIO, TEXAS

**CULTURED PEARL AND DIAMOND
NECKLACE, BUCCELLATI**

Composed of three strands of cultured pearls
measuring from approximately 9.2 to 7.5 mm, the
openwork square clasp set with round and single-
cut diamonds, *unsigned; circa 1967.*

*Accompanied by photocopy of invoice from Mario
Buccellati, dated August 10, 1967, available upon
request.*

US\$ 5,000-7,000





125

PROPERTY FROM THE ESTATE OF FLORA
CAMERON CRICHTON, SAN ANTONIO, TEXAS

DIAMOND AIGRETTE

Designed as a sheaf of wheat, set with old mine
and single-cut diamonds, *with French import
marks; circa 1800.*

US\$ 8,000-12,000

PROPERTY FROM THE ESTATE OF FLORA
CAMERON CRICHTON, SAN ANTONIO, TEXAS

**PAIR OF GOLD, CULTURED PEARL AND
DIAMOND EARCLIPS, TIFFANY & CO.,
FRANCE**

Of foliate design, featuring one black and one white cultured pearl each measuring approximately 11.1 mm, with textured gold and pavé-set round and single-cut diamond leaves, *signed Tiffany & Co., France, with French export marks; 1960s.*

US\$ 4,000-6,000



127

PROPERTY FROM THE ESTATE OF FLORA
CAMERON CRICHTON, SAN ANTONIO, TEXAS

**EMERALD, DIAMOND AND ENAMEL
CLIP-BROOCH, DAVID WEBB**

Designed as a horse applied with white enamel, the eyes set with cabochon emeralds, accented with round and single-cut diamonds, gross weight approximately 28 dwts, *signed Webb.*

US\$ 5,000-7,000

□ 128 SOLD WITHOUT RESERVE

PROPERTY FROM THE ESTATE OF FLORA
CAMERON CRICHTON, SAN ANTONIO, TEXAS

**PAIR OF DIAMOND EARCLIPS, TIFFANY
& CO., FRANCE**

Designed as interlocking hoops set with round
diamonds, *signed T&Co, with French export and
workshop marks.*

US\$ 3,000-4,000



□ 129 SOLD WITHOUT RESERVE

PROPERTY FROM THE ESTATE OF FLORA
CAMERON CRICHTON, SAN ANTONIO, TEXAS

**PAIR OF GOLD AND DIAMOND
EARCLIPS, CHAUMET, PARIS**

The stylized gold chain links embellished with
tapered lines of round diamonds, gross weight
approximately 18 dwts, *signed Chaumet Paris,
with French assay and workshop marks.*

US\$ 1,500-2,000





130

PROPERTY FROM THE ESTATE OF FLORA
CAMERON CRICHTON, SAN ANTONIO, TEXAS

**GOLD, GEM-SET AND DIAMOND
NECKLACE, JEFF WISE**

The gold cord necklace embellished with a variety of interchangeable beads, composed of or inlaid with colored stones including lapis lazuli, malachite, turquoise, chrysocolla, chalcedony and opal, accented with round sapphires, diopside, tourmalines, zircons and diamonds, *length 22 inches, signed Wise.*

US\$ 6,000-8,000

PROPERTY FROM THE ESTATE OF FLORA
CAMERON CRICHTON, SAN ANTONIO, TEXAS

**CORAL, LAPIS LAZULI AND TURQUOISE
CUFF-BRACELET, CHARLES LOLOMA**

Set to the front with a row of coral segments,
accented by turquoise and lapis lazuli, gross
weight approximately 81 dwts, *internal
circumference 6 inches, signed Loloma.*

*Please note this property cannot be shipped
internationally due to endangered species
materials.*

● US\$ 8,000-12,000



PROPERTY OF THE HEIRESS OF AN AMERICAN
AUTOMOBILE MANUFACTURER

EMERALD AND DIAMOND RING

Centering an emerald-cut emerald weighing
4.74 carats, framed and flanked by baguette
diamonds, size 9¼.

*Accompanied by AGL report no. 1103894 dated
October 2, 2019 stating that the emerald is of
Colombian origin, clarity enhancement: minor,
type: traditional.*

US\$ 18,000-22,000



WHITE GOLD AND DIAMOND 'BAIGNOIRE HYPNOSE' WRISTWATCH, CARTIER

The white gold oval dial designed as an
asymmetrical swirl of round diamonds, featuring
Roman numeral indicators and blued steel hands,
completed by a white strap with round diamond-
set clasp, quartz movement, *length adjustable,*
dial, case back, strap and clasp signed Cartier,
case back numbered 92708PX 3213, with Swiss
hallmarks.

US\$ 20,000-30,000

134

PROPERTY FROM A DISTINGUISHED FAMILY
COLLECTION

PAIR OF DIAMOND EARCLIPS

Designed as cascading clusters set with
round, tapered baguette and marquise-shaped
diamonds. Fitted with posts.

US\$ 15,000-25,000



135

PROPERTY FROM A PRIVATE FAMILY
COLLECTION

DIAMOND RING

Bezel-set with an emerald-cut diamond weighing
4.61 carats, size 6.

*Accompanied by GIA report no. 1206632033
dated October 2, 2019 stating that the diamond is
J color, VS2 clarity.*

US\$ 20,000-30,000





THIS PAGE
LOTS 23 & 189

137

PROPERTY OF A PRIVATE COLLECTOR, GRANTS
PASS, OREGON

DIAMOND BRACELET

Centered on a geometric plaque of stylized
buckle design, set throughout with baguette, old
European and single-cut diamonds, *length 7³/₈*
inches; 1930s.

US\$ 20,000-30,000



138

**PAIR OF ROCK CRYSTAL, CULTURED
PEARL AND DIAMOND EARCLIPS,
SEAMAN SCHEPPS**

Designed as clusters, each set with three rock
crystal cabochons, two carved with a foliate
motif, accented by cultured pearls measuring
from approximately 6.0 to 2.8 mm, *signed*
Seaman Schepps, numbered 16494, with maker's
mark. With signed box.

US\$ 3,000-5,000



PROPERTY OF A PRIVATE COLLECTOR,
PARK CITY, UTAH

**AMETHYST, CORAL AND DIAMOND
'DELICES DE GOA' PENDANT-
NECKLACE AND PAIR OF EARCLIPS,
CARTIER, FRANCE**

Composed of clusters of amethyst and coral beads, highlighted with round diamonds, the pendant suspended from a cream satin cord, necklace length 15¼ inches, signed Cartier, pendant numbered 72075 A, earclips numbered 37217A, with French assay and workshop marks. Earclips fitted with posts. With signed boxes.

Accompanied by two Certificates of Authenticity from Cartier each dated May 5, 2006.

Please note this property cannot be shipped internationally due to endangered species materials.

● US\$ 6,000-8,000



PROPERTY OF A FOUNDER OF THE COLONIAL
DAMES OF NEW YORK

DIAMOND BROOCH, HOWARD & CO.

Designed as a crescent, set with old European-cut diamonds, signed *Howard & Co.*; circa 1910.

Howard & Co. was a New York based jeweler active from 1866-1922. Located on 5th Avenue, they were considered a competitor of Tiffany & Co.

US\$ 5,000-7,000



PROPERTY OF A BEVERLY HILLS COLLECTOR

FOUR DIAMOND BANGLE-BRACELETS

Comprising two bangles in white gold, and two in yellow gold, each set with round diamonds, internal circumference 7½ inches.

US\$ 6,000-8,000



WORKS FROM THE COLLECTION OF

MARC JACOBS

LOTS 142-151

Few individuals have exerted such broad an influence on the trends of fashion and contemporary art as Marc Jacobs. Considered one of the most important tastemakers of the last three decades, Jacobs's unrelenting commitment to his creative vision has earned him immense appreciation, as both head designer of his eponymous fashion label and formerly as creative director of Louis Vuitton between 1997 and 2013. It is of little surprise, then, that Jacobs's discerning eye and fastidious taste for exceptional quality is reflected in his esteemed collection of contemporary art and jewelry, which brings together an iconoclastic and eclectic host of works that testifies to the extraordinary character of its ensembler.

His collection of jewelry offered here reveals his appreciation for classic designs and whimsical creations of the finest craftsmanship. A delightful array of animals rendered in a kaleidoscope of colored gemstones highlight an affection for the unexpected. Featuring pieces from the revered maker Boucheron, Jacobs's collection speaks to his renowned aesthetic blending impeccable design sense with singular style.



Photography by Victoria Stevens

WORKS FROM THE COLLECTION OF
MARC JACOBS

**DIAMOND NECKLACE, BOUCHERON,
FRANCE**

Composed of a line of round diamonds, *length*
16½ inches, signed Boucheron, numbered
P56099, with French assay mark and partial
workshop mark.

US\$ 15,000-20,000





○ 143

WORKS FROM THE COLLECTION OF
MARC JACOBS

**SAPPHIRE, AMETHYST AND DIAMOND
RING, BOUCHERON, FRANCE**

Designed as an owl, the feathers embellished with round sapphires and amethysts, the eyes set with two cabochon amethysts, accented by round diamonds, size 5½, signed Boucheron, numbered E35018, with French assay and maker's marks.

US\$ 6,000-8,000

○ 144

WORKS FROM THE COLLECTION OF
MARC JACOBS

**GEM-SET 'MASY' RING, BOUCHERON,
FRANCE**

Designed as a chameleon, pavé-set throughout with numerous round gemstones including red spinels, pink, purple and yellow sapphires, rubies, and spessartine and tsavorite garnets, size 6, signed Boucheron, numbered E36606, with French assay and maker's marks.

US\$ 4,000-6,000



○ 145

WORKS FROM THE COLLECTION OF
MARC JACOBS

**GEM-SET CLIP-BROOCH, BOUCHERON,
FRANCE**

Designed as a chameleon, set with round pink, yellow and blue sapphires, and tsavorite garnets, the eye set with a round ruby, perched atop an articulated branch, *signed Boucheron, numbered E11208, with partial French assay mark.*

US\$ 4,000-6,000



○ 146

WORKS FROM THE COLLECTION OF
MARC JACOBS

**RUBY, PINK SAPPHIRE, EMERALD
AND COLORED DIAMOND RING,
BOUCHERON, FRANCE**

Designed as a serpent, the body pavé-set with round rubies and pink sapphires, the tip of the tail accented by black diamonds, the eyes set with two cabochon emeralds, *size 5, signed Boucheron, numbered C068.35654.53, with partial French assay and workshop marks.*

Please note that the black diamonds have not been tested for natural origin of color.

US\$ 3,000-5,000



○ 147

WORKS FROM THE COLLECTION OF
MARC JACOBS

**RUBY, PINK SAPPHIRE AND EMERALD
'GRENOUILLE' RING, BOUCHERON,
FRANCE**

Designed as a frog, the body set with round rubies and pink sapphires, the eyes set with round emeralds, size 5¾, signed Boucheron, numbered E04147, with partial French assay mark.

US\$ 3,000-5,000



○ 148

WORKS FROM THE COLLECTION OF
MARC JACOBS

**GEM-SET 'MASY' RING, BOUCHERON,
FRANCE**

Designed as a chameleon, the body adorned with round tsavorite garnets, yellow sapphires, blue sapphires and rubies, the eyes set with round rubies, gross weight approximately 17 dwts, size 6, signed Boucheron, numbered E24264, with French assay and maker's marks.

US\$ 4,000-6,000



○ 149

WORKS FROM THE COLLECTION OF
MARC JACOBS

BLACK DIAMOND AND DIAMOND RING

Designed as a serpent, pavé-set with round black diamonds, the eyes set with two round near colorless diamonds, size 7, with Italian registry and assay marks.

Please note that the black diamonds have not been tested for natural origin of color.

US\$ 1,000-2,000



○ 150

WORKS FROM THE COLLECTION OF
MARC JACOBS

COLORED DIAMOND AND DIAMOND RING, DE GRISOGONO

Designed as a pear, pavé-set with numerous round diamonds of brown and yellow hues, accented with round near colorless diamonds, size 5½, signed de Grisogono, numbered B7417.

Please note that the diamonds of brown and yellow hues have not been tested for natural origin of color.

US\$ 3,000-5,000



○ 151

WORKS FROM THE COLLECTION OF
MARC JACOBS

**TWO GOLD PENDANT-NECKLACES,
SOLANGE AZAGURY-PARTRIDGE**

One necklace suspending a gold nugget, gross weight approximately 22 dwts, *length 20 inches*; and a 'Bleeding Heart' necklace suspending a gold anatomical heart pendant, applied with red lacquer, gross weight approximately 23 dwts, *length 24 inches*; each with maker's mark for Solange Azagury-Partridge and British hallmarks.

US\$ 2,000-3,000



152

PROPERTY FROM A PRIVATE FAMILY
COLLECTION, NEW CANAAN, CONNECTICUT

DIAMOND RING

Horizontally-set with an emerald-cut diamond
weighing 4.06 carats, size 6¼.

*Accompanied by GIA report no. 2205544276
dated August 26, 2019 stating that the diamond is
J color, VVS2 clarity.*

US\$ 20,000-30,000



153

**TURQUOISE AND DIAMOND CLIP-
BROOCH, VAN CLEEF & ARPELS**

Designed as a flower, set throughout with
turquoise cabochons, bordered by gold ropetwist,
highlighted with round diamonds, *signed Van
Cleef & Arpels N.Y., numbered 130 S.O.; 1960s.*
With signed pouch.

US\$ 18,000-22,000





154

PROPERTY FROM THE ESTATE OF
SUSAN S. DILLON

**GOLD AND DIAMOND 'REGATTA'
NECKLACE, VERDURA**

Of knotted rope design, accented with round
diamonds, gross weight approximately 126 dwts,
length 15 $\frac{3}{8}$ inches, signed Verdura.

LITERATURE

*For a very similar necklace, see Verdura The Life
and Work of a Master Jeweler by Patricia Corbett,
page 173.*

US\$ 10,000-15,000

END OF SESSION ONE



THIS PAGE
LOTS 23 & 189

SESSION TWO

**NEW YORK
MONDAY
9 DECEMBER 2019
2:00 PM
LOTS 155-306**

Please note these lots are
not shown in actual size



**GOLD 'VINTAGE ALHAMBRA'
NECKLACE, VAN CLEEF & ARPELS,
FRANCE**

Composed of ten quatrefoil-shaped motifs,
spaced by fine gold chain, *length 16½ inches,*
signed VCA, numbered CL 41133, with French
assay mark.

US\$ 6,000-8,000



**PAIR OF CORAL, MALACHITE, LAPIS LAZULI AND DIAMOND EARCLIPS,
VAN CLEEF & ARPELS, FRANCE**

Set with carved segments of lapis lazuli, coral and malachite, accented by round diamonds, *signed VCA, Made in France, numbered NY 8K605-75, with French assay, export and workshop marks.*

Please note this property cannot be shipped internationally due to endangered species materials.

● US\$ 5,000-7,000



PROPERTY FROM THE ESTATE OF
SUSAN S. DILLON

**GOLD AND DIAMOND CLIP-BROOCH
AND PAIR OF PENDANT-EARCLIPS**

The clip-brooch of stylized foliate design set with round diamonds, and a pair of earclips of scroll design, suspending detachable pear-shaped pendants, set throughout with round diamonds, bordered by gold ropetwist.

US\$ 4,000-6,000





158

**GOLD AND DIAMOND RING AND PAIR
OF EARCLIPS, CHAUMET, PARIS**

The ring designed as a gold band, featuring four-pointed star motifs centering round diamonds, together with a pair of matching earclips of hoop design, *ring size 8³/₄, each signed Chaumet, Paris, ring partially numbered, earclips numbered 145539, earclips with French assay and workshop marks.* Earclips fitted with posts. With signed box.

US\$ 5,000-7,000

159

PROPERTY OF A LADY, PALM BEACH, FLORIDA

**PAIR OF SAPPHIRE AND DIAMOND
EARCLIPS, SCHLUMBERGER FOR
TIFFANY & CO., FRANCE**

Of domed design, set throughout with round sapphires, topped with a star motif accented by round diamonds, *signed Tiffany Schlumberger, Made in France, with French export and workshop marks.* Fitted with posts.

US\$ 10,000-15,000



160

PROPERTY OF A BEVERLY HILLS COLLECTOR
**PINK GOLD, DIAMOND AND
TOURMALINE 'SERPENTI' BRACELET-
WATCH, BULGARI**

The pink gold tubogas bracelet terminating in a black textured dial featuring baton and Roman numeral indicators, partially framed by round diamonds, the crown set with a cabochon pink tourmaline, quartz movement, gross weight approximately 88 dwts, *internal circumference adjustable, dial and case back signed Bulgari, case back numbered SP P 35 G and PO 1365, with Swiss hallmarks.*

US\$ 15,000-20,000

PROPERTY FROM THE ESTATE OF
SUSAN S. DILLON

**GOLD, CITRINE AND DIAMOND
CHOKER-NECKLACE, MARINA B,
FRANCE**

Centering an oval-shaped citrine measuring approximately 29.0 x 18.9 x 12.3 mm, set between two marquise-shaped diamonds, on a blackened and yellow gold sprung band, gross weight approximately 147 dwts, *internal circumference expandable, signed Marina B France, numbered C832, with French assay and workshop mark. With signed box.*

US\$ 7,000-9,000



□ 162 SOLD WITHOUT RESERVE

PROPERTY OF A BEVERLY HILLS COLLECTOR

**PAIR OF TITANIUM EARCLIPS, JAR,
PARIS**

Designed as geranium leaves, one finished with a yellowish green color, the other a vivid green color, *signed JAR Paris, numbered 38, with French assay and workshop marks.* With signed pouch.

US\$ 3,000-5,000



163

**GOLD AND MOTHER-OF-PEARL
'CADENAS' BRACELET-WATCH,
VAN CLEEF & ARPELS**

Of buckle design, featuring a square mother-of-pearl dial, on a double snake chain bracelet, quartz movement, *length 6¾ inches, signed Van Cleef & Arpels, numbered HH 69963 and 1399197, with Swiss hallmarks and maker's mark.* With signed box.

Please note this property cannot be shipped internationally due to endangered species materials.

Accompanied by a Certificate of Authenticity from Van Cleef & Arpels, dated July 8, 2019.

● US\$ 5,000-7,000



PROPERTY FROM THE ESTATE OF
SUSAN S. DILLON

GOLD EVENING BAG

Composed of basketwoven gold measuring approximately $6\frac{3}{4} \times 3\frac{1}{2} \times 1\frac{7}{8}$ inches, opening to reveal a mirror, gross weight approximately 255 dwts, with *Italian registry mark*.

US\$ 5,000-7,000



165

PROPERTY OF A PRIVATE COLLECTOR

**PAIR OF GOLD, SEED PEARL AND
ENAMEL EARRINGS**

Composed of graduated circular links, applied with concentric black enamel rings and set with radiating seed pearls, alternating with baton-shaped links inset with seed pearls, suspending oval-shaped pearls.

Please note that the pearls have not been tested for natural origin.

US\$ 6,000-8,000



166

PROPERTY FROM A PRIVATE COLLECTION

**IRON LACQUER, SILVER AND GOLD
'DAMASCENE' CUFF-BRACELET,
ANGELA CUMMINGS FOR TIFFANY &
CO.**

The gold cuff-bracelet applied with iron lacquer, decorated with two-color gold and silver circular motifs, *internal circumference 5¾ inches, signed T. & Co.*

US\$ 5,000-7,000

PROPERTY OF A PROMINENT NEW YORK
COLLECTOR

**FANCY VIVID YELLOW DIAMOND AND
DIAMOND RING**

Centering a Fancy Vivid Yellow oval-shaped
diamond weighing 4.01 carats, flanked by half-
moon-shaped diamonds, size 4³/₄.

*Accompanied by GIA report no. 2175720877 dated
July 21, 2016 stating that the diamond is Fancy
Vivid Yellow, Internally Flawless.*

US\$ 80,000-100,000



PROPERTY OF A LADY

**EMERALD AND DIAMOND NECKLACE
AND PAIR OF EARCLIPS**

The necklace composed of fluted emerald beads, spaced by gold rondelles, the rondelles to the front set with round diamonds, suspending a larger carved emerald drop, the stylized gold links adorned with tapered baguette and round diamonds, and a matching pair of earclips suspending similarly-carved emerald beads, capped and surmounted by round, tapered baguette, marquise and pear-shaped diamonds, necklace length 16 $\frac{7}{8}$ inches, earclips with Italian registry marks, one diamond missing from the necklace. Earclips fitted with posts.

US\$ 40,000-60,000



IMPORTANT JEWELS FROM A FAMILY COLLECTION INHERITED FROM MRS. JOHN C. WILSON, NÉE PRINCESS NATALIE PALEY

LOTS 169-170

Born Countess Natalia Pavlovna von Hohenfelsen in 1905, Princess Natalie Paley (Mrs. John Chapman Wilson) was the daughter of Grand Duke Paul Alexandrovich, uncle of the last Russian Czar, Nicholas II.

As a young girl, Natalie escaped Russia with her mother and sister Irina and lived in exile in Paris during the 1920s. She became a noted model for *Vogue Magazine*, first in Paris and later in New York. Edward Steichen, Horst and Cecil Beaton took many of her fashion photographs. While in London she met the Broadway producer and director John C. "Jack" Wilson, business partner of Noel Coward, Alfred Lunt and Lynn Fontanne. Jack Wilson and Natalie were married in 1937 at his home in Fairfield, Connecticut.

Her close friendship with jewelry designer Fulco di Verdura would result in her collection of several pieces of jewels created by him, one of which is on offer here. Several pieces from the collection will also be sold in the December 10, Magnificent Jewels sale.



Princess Natalie Paley

Upon her death in 1981, the jewels on offer were passed to John C. Wilson's niece, a portion of which was sold by Sotheby's in 2009. Sotheby's is once again honored to present a selection of jewels from this important family collection.



169

IMPORTANT JEWELS FROM A FAMILY
COLLECTION INHERITED FROM MRS. JOHN C.
WILSON, NÉE PRINCESS NATALIE PALEY

**ZIRCON AND DIAMOND RING,
VERDURA**

Designed as a band of channel-set zircon
baguettes, flanked by bezel-set single-cut
diamonds, extending to a border of fluted gold,
size 7½, signed Verdura; circa 1947.

US\$ 5,000-7,000

IMPORTANT JEWELS FROM A FAMILY
COLLECTION INHERITED FROM MRS. JOHN C.
WILSON, NÉE PRINCESS NATALIE PALEY

**SUITE OF GOLD, DIAMOND AND
ENAMEL JEWELS, FRANCE**

Comprising: a gold bracelet set with three rose-cut diamonds, within a geometric pattern applied with black enamel lines and latticework, *internal circumference 6¼ inches, with French export and workshop marks*; a matching brooch set with and suspending rose-cut diamonds, *with French export and workshop marks*; and a pair of matching earrings; *circa 1880, the earrings with later screwback fittings.*

US\$ 3,000-5,000



PROPERTY FROM AN IMPORTANT FAMILY
COLLECTION

**SUEDE PURSE, ANNE-MARIE OF
FRANCE, PARIS**

Designed as a telephone with rotary dial, the front inscribed 'Anne-Marie, Paris, Ope. 44-39', opening to reveal a large compartment with interior pocket, *signed Anne-Marie, 228, Rue de Rivoli, Hôtel Meurice, Paris; circa 1960.*

Located on the ground floor of the grand *Hôtel Meurice*, Anne-Marie created fantastic surrealist novelty purses for Paris' elite. A version of this purse belongs in The New York Metropolitan Museum collection (accession no. 2010.251a-c).

US\$ 1,500-2,500





172

PROPERTY FROM AN IMPORTANT FAMILY COLLECTION

SUEDE PURSE, ANNE-MARIE OF FRANCE, PARIS

Designed as an ice bucket with Champagne bottle, topped with lucite ice cubes, the black suede exterior inscribed Champagne, Reims, France, opening to reveal a large interior compartment and interior pocket, signed Anne-Marie, 228, Rue de Rivoli, Hôtel Meurice, Paris; circa 1965.

Sold in Anne-Marie's shop in the *Hôtel Meurice*, the Champagne bucket purse was also gifted to VIP guests of the hotel, placed in their suites to be found on their arrival.

LITERATURE

For another example of this Champagne bucket purse see Fashion: The Definitive History of Costume and Style, Smithsonian Books, ed. Kathryn Hennessey, page 294.

US\$ 1,500-2,500



**PAIR OF GOLD AND DIAMOND
'COSMOS' EARCLIPS, VAN CLEEF &
ARPELS, FRANCE**

Designed as a pair of clovers, set with round diamonds, *signed Van Cleef & Arpels, numbered 133078, with French assay and maker's marks.*

US\$ 15,000-20,000



SAPPHIRE RING, TIFFANY & CO.

The sugarloaf cabochon sapphire bezel-set within a polished gold mounting, size 4, signed *Tiffany & Co.*

Accompanied by AGL report no. 1103208 dated September 4, 2019 stating that the sapphire is of Thai origin, with indications of heating.

US\$ 8,000-12,000

**GOLD AND LAPIS LAZULI BRACELET, ALETTO BROTHERS**

Composed of oval-shaped nautical links set with lapis lazuli, spaced by round gold links, length 8¼ inches, signed *Aletto Bros.*

US\$ 6,000-8,000



176

PROPERTY FROM A PRIVATE FAMILY
COLLECTION, KEY WEST, FLORIDA

**GOLD, CORAL AND DIAMOND CLIP-
BROOCH, DAVID WEBB**

Featuring eight pear-shaped coral cabochons,
centering a plaque pavé-set with round diamonds,
highlighted with textured gold detailing, *signed
Webb*.

*Please note this property cannot be shipped
internationally due to endangered species
materials.*

© US\$ 7,000-9,000



177

PROPERTY FROM THE COLLECTION OF
CAROLINE P. IRELAND

**TWO-COLOR GOLD AND COLORED
DIAMOND COMPACT, BUCCELLATI**

Designed as an oyster composed of textured
gold, accented with a starfish motif centering a
round diamond of brown hue, opening to reveal a
mirror and powder compartment, gross weight
approximately 77 dwts, *signed M. Buccellati, Italy*.
With fitted pouch.

*Please note that the diamond of brown hue has
not been tested for natural origin of color.*

US\$ 3,000-4,000



□ 178 SOLD WITHOUT RESERVE

PROPERTY OF A BEVERLY HILLS COLLECTOR

**CULTURED PEARL AND YELLOW
SAPPHIRE NECKLACE**

Composed of 29 cultured pearls of golden hue measuring from approximately 15.1 to 13.0 mm, completed by a boule-shaped clasp set with round yellow sapphires. *length 18½ inches.*

Please note the cultured pearls have not been tested for natural origin of color.

US\$ 5,000-7,000



DIAMOND RING

Horizontally-set with an oval-shaped diamond weighing 1.11 carats, in a brushed pink gold mounting, size 6.

Accompanied by GIA report no. 5121114948 dated May 17, 2010 stating that the diamond is D color, SI2 clarity.

US\$ 3,500-5,500



PROPERTY FROM A PRIVATE COLLECTION,
NEW YORK, NEW YORK

**CULTURED PEARL AND DIAMOND
CLIP-BROOCH**

Of floral design, featuring petals pavé-set with round diamonds, centering a later added button-shaped cultured pearl measuring approximately 15.9 x 15.8 mm, *partially signed V. Cleef & Arpels, numbered 54205.*

US\$ 7,000-9,000



PROPERTY OF A PRIVATE COLLECTOR

**PAIR OF NATURAL PEARL AND
DIAMOND EARRINGS**

Each designed as a line of single-cut diamonds, surmounted with old European-cut diamonds, suspending drop-shaped natural pearls measuring approximately 8.4 and 8.0 mm, capped with rose-cut diamonds; *circa 1925 with later added posts.*

Accompanied by GIA report no. 2195667589 dated September 28, 2018 stating that the pearls are natural, saltwater.

US\$ 7,000-9,000



PROPERTY OF A DISTINGUISHED AMERICAN
FAMILY

**GOLD, JADE, ENAMEL AND DIAMOND
COMPACT AND GOLD AND ENAMEL
LIPSTICK HOLDER**

The circular gold compact applied with red and black enamel, topped with carved jade and rose-cut diamonds, opening to reveal a mirror and powder compartment, fitted with pendant bail, together with a matching lipstick holder fitted with a baton-link chain; *circa 1930*.

US\$ 3,000-5,000



PROPERTY OF A DISTINGUISHED AMERICAN FAMILY

DIAMOND WRISTWATCH, FRANCE

The round dial applied with Arabic numbers and blued steel hands, encircled by a round diamond-set bezel measuring approximately 24.0 mm, extending to lugs pavé-set with rose-cut diamonds and a black grosgrain strap accented with single-cut diamonds, the clasp set with onyx and single-cut diamonds, manual movement, *internal circumference 6¼ inches, movement signed C. H. Meylan Brassus, Swiss, movement numbered 25911, clasp numbered 5295, with French assay and workshop marks, two rose-cut diamonds missing; circa 1930.*

US\$ 3,000-5,000



184

PROPERTY OF A DISTINGUISHED AMERICAN FAMILY

GOLD, HARDSTONE, ENAMEL AND DIAMOND COMPACT

The oval-shaped compact featuring a cover of a polychrome enameled Egyptian revival design accented with a carved green hardstone encircled by rose-cut diamonds, the sides applied with black enamel, opening to reveal a powder compartment and mirror, gross weight approximately 35 dwts, *one small diamond missing; circa 1925.*

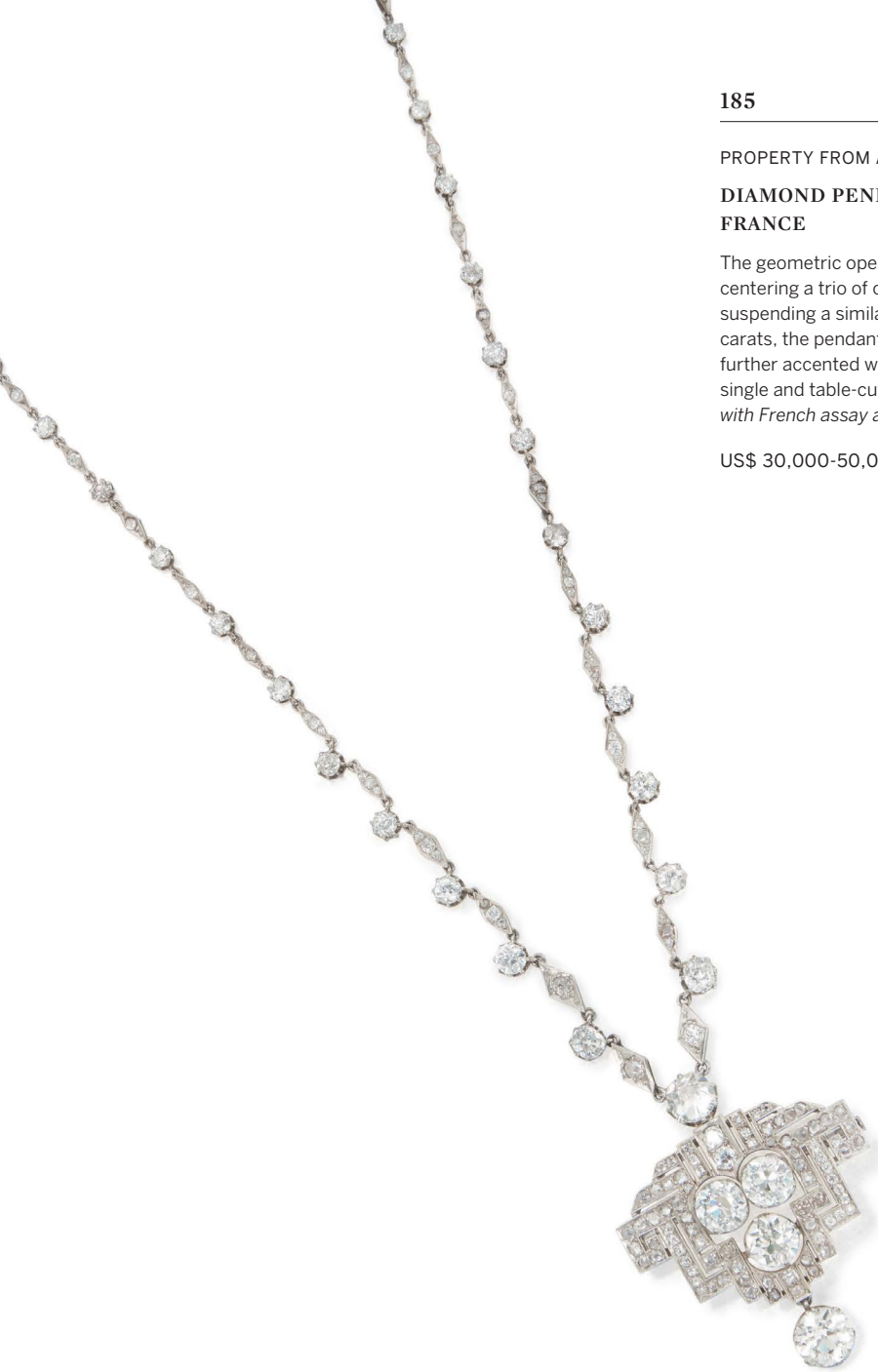
US\$ 2,000-3,000

PROPERTY FROM A FAMILY COLLECTION

**DIAMOND PENDANT-NECKLACE,
FRANCE**

The geometric open work pendant-brooch centering a trio of old European-cut diamonds, suspending a similarly-cut diamond weighing 3.50 carats, the pendant-brooch and detachable chain further accented with smaller old European, rose, single and table-cut diamonds, *length 22½ inches, with French assay and workshop marks; circa 1920.*

US\$ 30,000-50,000





186

DIAMOND BROOCH, RENÉ BOIVIN

Of tiered scalloped design, set with old mine, old European and rose-cut diamonds, *unsigned, with French import marks; 1918.*

Accompanied by a Certificate of Authenticity from Françoise Cailles dated July, 18, 2011.

US\$ 15,000-20,000

187

PROPERTY FROM THE COLLECTION OF
CAROLINE P. IRELAND

**SILVER-TOPPED GOLD AND DIAMOND
PENDANT-BROOCH**

Designed as a Maltese cross, set with old mine and Swiss-cut diamonds, *brooch fitting removable, fitted with hinged bail, with French import mark; early 19th century. With fitted box.*

US\$ 4,000-6,000



188

PROPERTY OF AN UPPER EAST SIDE COLLECTOR

**RUBY, DEMANTOID GARNET AND
DIAMOND BRACELET**

Designed as a band of old European, single-cut and baguette diamonds, accented with kite-shaped ruby and marquise-shaped demantoid garnet floral motifs, *length 7 inches, with French assay and workshop marks; circa 1925.*

US\$ 12,000-15,000



189

PROPERTY OF A BEVERLY HILLS COLLECTOR
**PAIR OF PERIDOT AND DIAMOND
EARRINGS**

Suspending two pear-shaped peridots, topped by two emerald-cut peridots, framed and accented by old mine and Swiss-cut diamonds; *circa 1880 with later modifications.*

US\$ 8,000-12,000



190

PROPERTY OF A LADY
DIAMOND RING

Centering two old European-cut diamonds and one round diamond, bordered by baguette diamonds, accented by smaller old European and single-cut diamonds, *size 6; circa 1930.*

US\$ 7,000-9,000



PROPERTY OF A LADY, TEXAS

DIAMOND RING

Set with a marquise-shaped diamond weighing 6.00 carats, accented by two tapered baguette diamonds, size 7½.

Accompanied by GIA report no. 2145739182 dated June 5, 2012 stating that the diamond is H color, SI1 clarity.

US\$ 40,000-60,000



CULTURED PEARL, MOTHER-OF-PEARL AND DIAMOND 'PERLES DE CARTIER' WRISTWATCH, CARTIER,

The small round mother-of-pearl dial with blued steel hands, joined with a larger decorative face with Roman numerals eight through ten, with two apertures each centering a cultured pearl, bordered throughout by round diamonds, on a black textured strap, the buckle further adorned with round diamonds, quartz movement, dial, case back and strap signed Cartier, case back numbered 21072NX 3053, with Swiss hallmarks.

Please note this property cannot be shipped internationally due to endangered species materials.

● US\$ 20,000-30,000

PROPERTY OF A BEVERLY HILLS COLLECTOR

DIAMOND LONGCHAIN

Bezel-set with numerous round diamonds, *length*
49¾ inches.

US\$ 20,000-30,000





194

PROPERTY OF A BEVERLY HILLS COLLECTOR

**CULTURED PEARL AND DIAMOND
NECKLACE**

Composed of 22 graduated cultured pearls measuring from approximately 18.1 to 14.5 mm, completed by a boule-shaped clasp set with round diamonds, *length 15½ inches.*

US\$ 8,000-12,000

195

PROPERTY OF A LADY

**CULTURED PEARL, ONYX AND DIAMOND
PENDANT-BROOCH, BOUCHERON,
FRANCE**

Of articulated geometric design, the surmount featuring an onyx hoop topped with a button-shaped cultured pearl, suspending two bullet-shaped onyx segments, framed by round diamonds, further supporting a drop-shaped cultured pearl, capped by round diamonds, with detachable bail, signed Boucheron, with French assay and workshop marks. With signed box.

US\$ 15,000-20,000



196

PROPERTY OF A LADY

**EMERALD, SAPPHIRE, ROCK CRYSTAL
AND DIAMOND RING, DAVID WEBB**

The fluted rock crystal base centering a bezel-set sugarloaf cabochon emerald, accented by a row of cabochon sapphires, the sides highlighted with lines of round diamonds, size 6½, signed Webb.

US\$ 8,000-12,000



PROPERTY OF A DISTINGUISHED LADY

JADEITE AND DIAMOND NECKLACE

Composed of 65 graduated jadeite beads measuring from approximately 9.4 to 4.2 mm, completed by an openwork clasp set with old European and single-cut diamonds, *length 19½ inches, clasp signed Gillot & Co.*

US\$ 10,000-15,000



□ 198 SOLD WITHOUT RESERVE

PROPERTY OF A BEVERLY HILLS COLLECTOR

**PAIR OF TITANIUM EARCLIPS, JAR,
FRANCE**

Designed as violets composed of titanium with a purple finish, *signed JAR, with French assay and workshop marks. With signed pouch.*

US\$ 3,000-5,000



199

PROPERTY OF A LADY

DIAMOND BRACELET

Centering a line of marquise-shaped diamonds, set between two rows of baguette diamonds, bordered by round diamonds, *length 6¾ inches.*

US\$ 12,000-15,000





200

PROPERTY OF A BEVERLY HILLS COLLECTOR

**PAIR OF NATURAL PEARL AND
DIAMOND EARRINGS**

Set with two semi-baroque drop shaped natural pearls measuring approximately 13.3 x 9.3 mm and 14.0 x 10.1 mm, capped with rose-cut diamonds, suspended from lines of single-cut diamonds topped with old European-cut diamonds; *circa 1900 with later added posts.*

Accompanied by GIA report no. 6203568065 dated September 20, 2019 stating that the two pearls are natural, saltwater.

US\$ 8,000-12,000

201

PROPERTY OF A LADY

DIAMOND BRACELET

Of geometric openwork design, each plaque centering four marquise-shaped diamonds, set throughout with old European-cut diamonds, accented by baguette diamonds, *length 7¼ inches, signed Cartier, numbered 21156; circa 1930.* With box signed Cartier.

US\$ 15,000-20,000



202

PROPERTY OF A COLLECTOR

DIAMOND AND EMERALD RING

Set with an emerald-cut diamond weighing approximately 3.50 carats, framed with calibr -cut emeralds, the geometric shoulders set with single-cut diamonds, size 6 $\frac{3}{4}$, one emerald missing; circa 1930.

US\$ 8,000-12,000



203

DIAMOND BRACELET, CARTIER

The highly flexible bracelet of geometric design, set with old mine, old European and single-cut diamonds, length 7 $\frac{3}{8}$ inches, signed Cartier London; circa 1920.

US\$ 15,000-20,000





204

204

DIAMOND SUITE

Comprising: a flexible headband composed of graduated lozenge-shaped motifs set with round diamonds; a matching hair comb; a necklace, *adjustable length, minimum length 14 $\frac{7}{8}$ inches, maximum length 17 $\frac{7}{8}$ inches*; a pair of pendant-earrings; and a matching ring centered on a square-cut diamond, *size 7*; *all except earrings signed Chimento, all with Italian registry and assay marks.*

US\$ 15,000-20,000

205

PROPERTY OF A BEVERLY HILLS COLLECTOR

EMERALD AND DIAMOND RING

Centering a square emerald-cut emerald weighing 9.48 carats, set between two triangle-shaped diamonds, *size 5*.

Accompanied by AGL report no. 1103612 dated September 10, 2019 stating that the emerald is of Colombian origin, clarity enhancement: minor, type: traditional.

US\$ 40,000-60,000



206

**PAIR OF DIAMOND AND ONYX
EARRINGS, CARTIER, FRANCE**

Designed as hoops pavé-set with round diamonds, highlighted with carved onyx segments, *signed Cartier, numbered 70856A, with French assay and workshop marks and Russian hallmarks.*

US\$ 7,000-9,000



207

**PROPERTY OF A LADY, MIAMI, FLORIDA
EMERALD AND DIAMOND RING**

Centering a square emerald-cut emerald weighing 5.65 carats, set between two half-moon-shaped diamonds, *size 7.*

Accompanied by AGL report no. 1104264 dated October 21, 2019 stating that the emerald is of Colombian origin, clarity enhancement: minor, type: modern.

US\$ 20,000-30,000



208

PROPERTY FROM A PRIVATE COLLECTION,
TEXAS

DIAMOND RING

Featuring a pear-shaped diamond weighing 5.04 carats, accented by tapered baguette diamonds, size 6¼.

Accompanied by GIA report no. 2205661797 dated October 14, 2019 stating that the diamond is D color, SI1 clarity.

US\$ 50,000-70,000



209

PROPERTY OF A PRIVATE COLLECTOR

**SAPPHIRE AND DIAMOND BRACELET,
FRANCE**

Of openwork design, featuring a geometric pattern set with old European and single-cut diamonds, highlighted with calibr -cut sapphires, length 6¾ inches, with French assay and workshop marks, one diamond missing; circa 1925.

US\$ 10,000-15,000



210

PROPERTY OF A BEVERLY HILLS COLLECTOR

PAIR OF DIAMOND EARCLIPS

Designed as hoops, set to the front and interior with round diamonds. Fitted with posts.

US\$ 7,000-9,000



211

PROPERTY OF A DISTINGUISHED LADY

SAPPHIRE AND DIAMOND RING, FRANCE

Of domed design, invisibly-set with five rows of calibr -cut sapphires, the shoulders adorned with baguette and round diamonds, size 5¼, with French export mark.

US\$ 8,000-12,000





SAPPHIRE AND DIAMOND RING, VAN CLEEF & ARPELS

Horizontally-set with an emerald-cut sapphire weighing 10.15 carats, the open work shoulders and gallery set with round diamonds, size 5½, signed Van Cleef & Arpels, numbered SU0509, with maker's mark.

US\$ 15,000-20,000

PROPERTY OF A PRIVATE COLLECTOR

WHITE GOLD 'JUSTE UN CLOU' BANGLE-BRACELET, CARTIER

Designed as a curved nail, the head and tip accented by round diamonds, *internal circumference 6¼ inches, signed Cartier, numbered OEQ593.*

US\$ 5,000-7,000



PROPERTY OF A BEVERLY HILLS COLLECTOR

TURQUOISE AND DIAMOND NECKLACE

Composed of 29 turquoise beads measuring from approximately 21.5 to 14.3 mm, completed by a boule-shaped clasp set with round diamonds, length 20½ inches.

US\$ 7,000-9,000



215

**PINK SAPPHIRE AND DIAMOND RING,
BULGARI**

Set with a cushion-cut pink sapphire weighing 4.09 carats, set between two pear-shaped diamonds, size 5½, signed Bulgari.

Accompanied by C. Dunaigre report no. CDC 1501160 dated January 29, 2015 stating that the pink sapphire is of Madagascar origin, with no indications of heating.

US\$ 12,000-18,000



216

**PROPERTY OF A LADY, SCOTTSDALE, ARIZONA
DIAMOND BRACELET**

Designed as a band of numerous round diamonds, internal circumference 6½ inches.

US\$ 10,000-15,000



PROPERTY OF A LADY

**PAIR OF SAPPHIRE AND DIAMOND
EARRINGS, BOUCHERON**

Centering two emerald-cut sapphires, framed by baguette and triangle-shaped diamonds, *backings signed Boucheron, posts with British hallmarks.* With signed pouch and box.

US\$ 6,000-8,000



SAPPHIRE AND DIAMOND BRACELET

Set with 12 emerald-cut sapphires, alternating with pairs of round diamonds, highlighted with baguette diamonds, *length 7½ inches.*

US\$ 15,000-20,000

PROPERTY OF A LADY

**SAPPHIRE AND DIAMOND RING,
ATTRIBUTED TO BOUCHERON**

Set with an emerald-cut sapphire weighing approximately 2.30 carats, flanked by tapered baguette diamonds, *unsigned, numbered 95925*. With signed box.

US\$ 5,000-7,000



220

**PAIR OF RUBELLITE AND DIAMOND
PENDANT-EARRINGS, SIFEN CHANG**

Of chandelier design, set with a pair of oval-shaped rubellites weighing approximately 5.45 and 4.70 carats, embellished with swirling lines and navette-shaped pendants set with round diamonds, *signed Sifen Chang in Chinese characters*. With signed box.

US\$ 10,000-15,000

221

PROPERTY OF A COLLECTOR

**JADEITE AND DIAMOND RING,
MOUNTED BY HARRY WINSTON**

Featuring an oval-shaped jadeite cabochon measuring approximately 28.1 x 17.1 x 9.0 mm, accented by pear-shaped diamonds and jadeite cabochons, size 6, *unsigned*.

Accompanied by a letter from Harry Winston stating that the ring was mounted by Harry Winston.

Accompanied by GIA report no. 1196704371 dated October 10, 2018 stating that the center jadeite is natural, with no indications of impregnation.

US\$ 20,000-30,000



222

PAIR OF DIAMOND EARCLIPS

Of chandelier design, the geometric surmounts set with round diamonds, suspending lines of baguette diamonds, terminating in marquise-shaped diamonds. Fitted with posts.

US\$ 10,000-20,000

223

PROPERTY OF A LADY

DIAMOND BRACELET

Composed of three rows of round diamonds alternating with emerald-cut diamonds, *length 8 inches.*

US\$ 12,000-15,000



□ 224 SOLD WITHOUT RESERVE

**CAT'S EYE CHRYSOBERYL AND
DIAMOND RING**

Centering a cat's eye chrysoberyl cabochon measuring approximately 10.7 x 10.1 x 7.5 mm, framed and accented by round and tapered baguette diamonds, *size 7.*

US\$ 8,000-12,000



PROPERTY FROM A PRIVATE COLLECTION

**GOLD AND DIAMOND SUITE OF
'VANNERIE' JEWELS, TIFFANY & CO.**

Comprising a necklace, bracelet and ring of gold basketweave design, accented by bands of round diamonds, total gross weight approximately 122 dwts, *necklace length 15½ inches, bracelet length 7½ inches, ring size 8, necklace and bracelet signed Tiffany & Co., ring signed T&Co.*

US\$ 10,000-15,000





226

**GOLD, CORAL, ONYX AND DIAMOND
SUITE OF JEWELS, VAN CLEEF &
ARPELS, FRANCE**

Comprising two textured gold bangle-bracelets, one set with onyx segments, the other set with coral segments, accented with round diamonds, together with a matching pair of earclips and a ring, bracelet internal circumference 6½ inches, ring size 4, each signed VCA, bracelets numbered 25337 and 25235 respectively, earclips numbered B3069 17, ring numbered B 51261 15, each with French assay marks, the coral-set bracelet, earclips and ring with French workshop marks; circa 1975. With three signed pouches.

Please note this property cannot be shipped internationally due to endangered species materials.

● US\$ 25,000-35,000



227

**GOLD, ANTIQUE COIN AND DIAMOND
'MONETE' NECKLACE, BULGARI**

Featuring an antique coin depicting King Louis XII on a horse, within an octagonal frame accented by round diamonds, the frame reverse inscribed 'Luis XII Asti 1498-1513 Cavallo,' suspended from a curb link chain, gross weight approximately 90 dwts, length 15¾ inches, signed Bulgari, Italy, numbered B695.

US\$ 8,000-12,000

228

PROPERTY FROM A PRIVATE FAMILY
COLLECTION

**PAIR OF GOLD AND DIAMOND
EARCLIPS**

Bezel-set with two round diamonds weighing
approximately 1.50 carats each, framed by single-
cut diamonds.

US\$ 7,000-9,000



229

PROPERTY OF A NEW YORK PHYSICIAN
DIAMOND RING

Set with a round diamond weighing 3.26 carats,
size 5¾.

*Accompanied by GIA report no. 14602732 dated
September 7, 2005 stating that the diamond is F
color, VS2 clarity.*

US\$ 25,000-35,000

**GOLD AND ANCIENT COIN SAUTOIR,
BULGARI**

Designed as a long curb link chain, featuring five ancient silver coins depicting the annunciation on the front and a shield on the reverse, the bezels each inscribed 'Charles II of Anjou 1285-1309 Silver Saluto - Naples,' gross weight approximately 160 dwts, length 40½ inches, signed *Bulgari N.Y.*, Made Italy, numbered 710905; circa 1975. With signed box.

Accompanied by a Certificate of Authenticity from Bulgari dated June 17, 2019.

US\$ 25,000-35,000





231

**PAIR OF GOLD, ANCIENT COIN AND
DIAMOND EARCLIPS, BULGARI**

Featuring two ancient coins depicting a man in profile, within hexagonal gold frames set with round diamonds, the reverse inscribed 'Carthago IV Cent. B.C.', *signed Bulgari, numbered BD 3662, with Italian registry and assay marks.* Fitted with posts; with signed box.

US\$ 5,000-7,000



232

PROPERTY FROM A CHARITABLE ESTATE,
PROCEEDS FROM THE SALE USED TO SUPPORT
MEDICAL RESEARCH AT WASHINGTON
UNIVERSITY IN ST. LOUIS

**EMERALD, CULTURED PEARL AND
DIAMOND PENDANT-NECKLACE**

Supporting a detachable pendant centering a pear-shaped emerald weighing approximately 75.00 carats, framed and surmounted by round diamonds, suspended from a necklace of torsade design, composed of 18 strands of cultured pearls measuring approximately 3.3 mm, the clasp further adorned with round diamonds, *length 16 inches.*

US\$ 10,000-15,000

PROPERTY OF A LADY, CINCINNATI, OHIO

**CORAL, TURQUOISE AND SEED PEARL
SUITE OF JEWELS**

The necklace and bracelet designed as torsades composed of 14 strands of coral beads, the clasps further set with a row of coral beads, set between two rows of turquoise cabochons, accented by seed pearls, with a matching pair of earclips featuring a pair of coral cabochons, accented by turquoise cabochons, *necklace length 18 inches, bracelet length 7 $\frac{7}{8}$ inches.*

Please note this property cannot be shipped internationally due to endangered species materials.

● US\$ 5,000-7,000



**GOLD, CHALCEDONY AND DIAMOND
CUFF-BRACELET AND RING,
DAVID WEBB**

Of geometric design, each centering a green chalcedony cabochon, accented by round diamonds, in textured gold mountings, total gross weight approximately 90 dwts, *ring size 6½, cuff-bracelet internal circumference 6 inches, signed Webb.*

US\$ 20,000-30,000



235

PROPERTY OF A COLLECTOR

**DIAMOND AND COLORED DIAMOND
RING, VAN CLEEF & ARPELS**

Designed as a scalloped navette-shaped cluster, featuring tiers of round diamonds and diamonds of yellow hue, size $5\frac{3}{4}$, signed VCA, numbered 27512, with French assay and workshop marks.

Please note that the diamonds of yellow hue have not been tested for natural origin of color.

US\$ 12,000-15,000



236

PROPERTY FROM A PRIVATE FAMILY
COLLECTION, NEW CANAAN, CONNECTICUT

DIAMOND RING

Centering an emerald-cut diamond weighing 4.40 carats, framed by baguette diamonds, embellished with round diamonds, size $5\frac{1}{4}$.

Accompanied by GIA report no. 6203544290 dated August 26, 2019 stating that the diamond is J color, VS1 clarity.

US\$ 22,000-28,000



GOLD NECKLACE, DAVID WEBB

Composed of slightly graduated hammered gold chain links, gross weight 186 dwts, length 33½ inches, detachable into three segments for a variety of wear, signed Webb.

US\$ 20,000-30,000





238

PROPERTY OF A LADY

GEM-SET AND DIAMOND CLIP-BROOCH, DAVID WEBB, AND PAIR OF EARCLIPS, CARTIER

The clip-brooch of scalloped design, featuring turquoise cabochons, highlighted with lines of round sapphires, accented by round diamonds, further set with cultured pearls measuring from approximately 6.2 to 4.9 mm, *signed Webb*; and a pair of earclips designed as whales, set with turquoise cabochons, the tails decorated with round diamonds, each with a sapphire cabochon eye, *signed Cartier, Made in France, numbered 55065, with French export and workshop marks.*

US\$ 7,500-10,000

PROPERTY FROM A PRIVATE COLLECTION,
TEXAS

GOLD AND DIAMOND NECKLACE

Composed of rectangular gold links, spaced by round links set with round diamonds, gross weight approximately 93 dwts, length $34\frac{1}{4}$ inches, detachable into three $22\frac{1}{2}$, $7\frac{1}{2}$ and $4\frac{1}{2}$ -inch segments for a variety of wear.

US\$ 8,000-12,000





240

**TWO GOLD AND RUBY BRACELETS,
BOUCHERON, PARIS**

Composed of fluted gold links alternating with openwork gold links set with pairs of round rubies, total gross weight approximately 30 dwts, length $7\frac{1}{2}$ inches, signed Boucheron Paris, numbered 6.475 and 6.555, each with French assay marks, one with French workshop mark.

US\$ 8,000-12,000

241

PROPERTY FROM A PRIVATE COLLECTION,
FLORIDA

**GOLD AND GEM-SET CHARM
BRACELET, CARTIER**

The gold link bracelet suspending seven detachable charms, four designed as gold watches, the crowns set with sapphires, an 'I Love You' spinner charm set with round diamonds, a panther similarly-set with round diamonds, and a case pavé-set with round pink sapphires and a round diamond thumbpiece, gross weight approximately 36 dwts, length 7 $\frac{3}{8}$ inches, bracelet and each charm signed Cartier, bracelet numbered C15764, six charms with French assay and workshop marks, one with Italian registry mark.

US\$ 12,000-18,000



242

**PAIR OF DIAMOND EARCLIPS, M.
GÉRARD, FRANCE**

Designed as knotted swags of round diamonds, signed M. Gerard, numbered 4383 and 84, with French assay and workshop marks.

US\$ 20,000-30,000



243

**PAIR OF SEED PEARL AND DIAMOND
EARCLIPS, ALETTO BROTHERS**

Each composed of 19 cascading strands of seed pearls, surmounted by round diamonds, *signed Aletto Bros., numbered G10.*

US\$ 3,500-5,500



244

PROPERTY OF A LADY

RUBY AND DIAMOND RING

Centering an oval-shaped ruby weighing 6.90 carats, flanked by shield-shaped diamonds, size 5¼.

Accompanied by AGL report no. 1103771 dated September 30, 2019 stating that the ruby is of Burmese origin, with indications of heating, clarity enhancement: minor, type: heating residues.

US\$ 20,000-30,000



245

DIAMOND RING, RENÉ BOIVIN, FRANCE

Of architectural design, centering a square-set old European-cut diamond, within a surround pavé-set with smaller old European and single-cut diamonds, size $5\frac{1}{4}$, unsigned, with French assay mark; circa 1935.

Accompanied by a Certificate of Authenticity from Cailles & Salit dated July 18, 2019.

US\$ 12,000-18,000



246

PROPERTY OF A LADY

SAPPHIRE AND DIAMOND BRACELET

Of slightly graduated design, set with alternating calibre-cut sapphires and baguette diamonds, length $6\frac{3}{4}$ inches.

US\$ 7,000-9,000



247

PROPERTY OF A BEVERLY HILLS COLLECTOR

**PAIR OF SAPPHIRE AND DIAMOND
PENDANT-EARCLIPS**

The stylized surmounts set with lines of baguette and round diamonds, suspending detachable pendants each centering a cabochon sapphire, framed by pear and marquise-shaped diamonds, topped by a round diamond.

US\$ 10,000-15,000



248

DIAMOND 'NOVO' RING, TIFFANY & CO.

Centering a square cushion-cut diamond weighing 2.32 carats, accented by round diamonds, size 6, signed *Tiffany & Co.*, numbered 31761123.

Accompanied by *Tiffany & Co.* diamond certificate no. 31761123/N04250392 stating that the diamond is D color, VVS1 clarity.

US\$ 18,000-22,000



**PAIR OF WHITE GOLD AND DIAMOND
PENDANT-EARCLIPS, BUCCELLATI**

Of honeycomb design with detachable pendants, embellished with round diamonds, *signed M. Buccellati, Italy, with Italian assay and registry marks*. Fitted with posts. With signed box.

US\$ 15,000-20,000



250

PROPERTY FROM A PRIVATE FLORIDA
COLLECTION

PINK SAPPHIRE AND DIAMOND RING

Featuring a cushion-cut pink sapphire weighing 5.46 carats, set within scrolls of round and single-cut diamonds, accented by baguette and trapezoid-cut diamonds, size 7.

Accompanied by AGL report no. 1103892 dated October 3, 2019 stating that the pink sapphire is of Burmese origin, with no indications of heating.

US\$ 20,000-30,000

251

PROPERTY OF A PRIVATE NEW JERSEY
COLLECTOR

DIAMOND RING

Centering a round diamond weighing 5.04 carats,
set between two tapered baguette diamonds,
size 5¾.

*Accompanied by GIA report no. 2205642959
dated October 8, 2019 stating that the diamond is
G color, VS2 clarity.*

US\$ 60,000-80,000



252

PROPERTY OF A LADY, CINCINNATI, OHIO

**SAPPHIRE AND DIAMOND PENDANT-
EARRINGS**

Suspending two oval-shaped sapphires, weighing
approximately 5.60 and 4.80 carats, framed and
accented by round and pear-shaped diamonds,
surmounted by a cluster of round and pear-
shaped diamonds. Fitted with posts.

*Accompanied by AGL report no. 1103614 A and
B dated September 13, 2019 stating that the
sapphires are of Ceylon origin, with indications of
heating.*

US\$ 25,000-35,000





□ 253 SOLD WITHOUT RESERVE

**AQUAMARINE AND DIAMOND
PENDANT-NECKLACE, TIFFANY & CO.**

The pendant featuring a heart-shaped aquamarine, framed by round diamonds, suspended from a fine link chain bezel-set at intervals with round diamonds, *length 17½ inches, signed Tiffany & Co.* With signed pouch.

US\$ 8,000-10,000



254

**PROPERTY OF A LADY, SCOTTSDALE, ARIZONA
DIAMOND RING**

Designed as an eternity band composed of two rows of pear-shaped diamonds, *size 5¾.*

US\$ 5,000-7,000

□ 255 SOLD WITHOUT RESERVE

PROPERTY OF A BEVERLY HILLS COLLECTOR

**PAIR OF MOONSTONE AND DIAMOND
EARCLIPS**

Featuring two moonstones cabochons, framed by faceted diamond beads, supporting a fringe of diamond beads and briolettes, the prongs further set with round diamonds. Fitted with retractable posts.

US\$ 4,000-6,000



256

PROPERTY OF A LADY, MONTEREY, CALIFORNIA

**FANCY YELLOW DIAMOND AND
DIAMOND RING, MICHAEL BEAUDRY**

Centering a cut-cornered rectangular modified brilliant-cut Fancy Yellow diamond weighing 2.15 carats, framed and accented by round diamonds, highlighted with baguette diamonds, size 6¾, with maker's mark for Beaudry.

Accompanied by GIA report no. 16353473 dated October 19, 2007 stating that the diamond is Fancy Yellow, Natural Color.

US\$ 8,000-12,000



257

SAPPHIRE AND DIAMOND BRACELET

Designed as a band of alternating sections of round sapphires and diamonds, *length 6¾ inches.*

US\$ 15,000-20,000



258

DIAMOND 'CAMÉLIA' RING, CHANEL, FRANCE

Of floral design, set with numerous round diamonds, *size 6½, signed Chanel, numbered X36484, with partial French assay mark.* With signed box.

US\$ 20,000-30,000



259

PROPERTY FROM A PRIVATE COLLECTION,
TEXAS

**PAIR OF DIAMOND AND RUBY
PENDANT-EARCLIPS**

The swing-set pendants set with pear-shaped
cabochon rubies and round, marquise and pear-
shaped diamonds, with similarly-set surmounts.

US\$ 8,000-12,000



260

PROPERTY FROM A PRIVATE FLORIDA
COLLECTION

DIAMOND RING, HARRY WINSTON

Centering a marquise-shaped diamond weighing
4.14 carats, set between two tapered baguette
diamonds, size 7½, with maker's mark for
Jacques Timey, partially numbered.

*Accompanied by GIA report no. 2205612286
dated September 24, 2019 stating that the
diamond is G color, VS1 clarity.*

US\$ 35,000-55,000



**GOLD AND DIAMOND NECKLACE, VAN
CLEEF & ARPELS**

Composed of textured gold links, alternating with round diamond-set links, gross weight approximately 43 dwts, length 15 $\frac{7}{8}$ inches, signed Van Cleef & Arpels, numbered 29454, with French assay and workshop marks.

US\$ 12,000-18,000



□ 262 SOLD WITHOUT RESERVE

PROPERTY OF A BEVERLY HILLS COLLECTOR

**PAIR OF TITANIUM EARCLIPS, JAR,
PARIS**

Designed as rose petals applied with a purple finish, *signed JAR Paris, with French assay and workshop marks.* With signed pouch.

US\$ 3,000-5,000

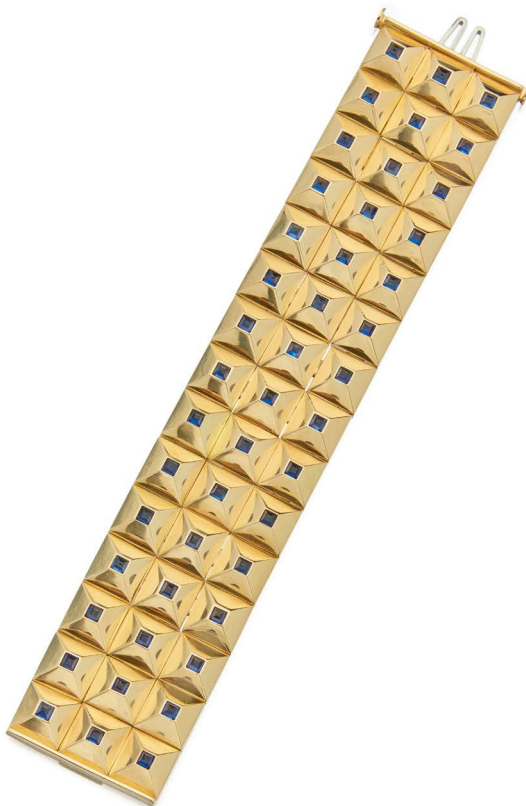


263

**GOLD AND SAPPHIRE BRACELET,
ALETTO BROTHERS**

Composed of three rows of gold pyramidal links, each topped with a reverse-set square-cut sapphire, gross weight approximately 93 dwts, *length 6¾ inches, signed Aletto Bros.* With signed box.

US\$ 20,000-30,000





264

**SAPPHIRE, DIAMOND AND ROCK
CRYSTAL NECKLACE**

Centering an oval-shaped sapphire, decorated with carved rock crystal segments, on a band pavé-set with numerous round diamonds, *internal circumference 15¾ inches, one diamond missing.*

US\$ 15,000-20,000

265

PROPERTY OF A LADY

**PAIR OF RUBY AND DIAMOND
EARCLIPS**

Each centering an oval-shaped ruby, framed by two rows of round diamonds. Fitted with posts.

US\$ 10,000-15,000



266

PROPERTY OF A LADY

**GOLD, GEM-SET AND DIAMOND
BRACELET, SEAMAN SCHEPPS**

Composed of large textured gold links, set with cabochon emeralds, sapphires and rubies, accented by old European-cut diamonds, gross weight approximately 82 dwts, *internal circumference 7 inches, signed Seaman Schepps; circa 1945.*

LITERATURE

For a bracelet of similar design, see Seaman Schepps A Century of New York Jewelry Design by Amanda Vaill and Janet Zapata, page 65.

US\$ 12,000-15,000





267

PROPERTY OF A BEVERLY HILLS COLLECTOR
**GOLD, WOOD AND DIAMOND
'CLÉMATITE' CLIP-BROOCH AND PAIR
OF EARCLIPS, VAN CLEEF & ARPELS,
FRANCE**

Of floral design, each centering a trio of round diamonds, the petals set with wood segments, clip-brooch signed Van Cleef & Arpels, numbered BL 6099, with French assay marks and Swiss hallmarks, earclips signed VCA, numbered 121675, with French assay marks.

Please note this property cannot be shipped internationally due to endangered species materials.

© US\$ 12,000-15,000



268

PROPERTY FROM A SAN FRANCISCO PRIVATE COLLECTION

**SAPPHIRE AND DIAMOND SUITE,
GRAFF**

Comprising: a necklace featuring a bow motif set with cabochon sapphires, round diamonds and a pear-shaped diamond, *length 15¾ inches*; a pair of matching earclips set with cabochon sapphires and round diamonds; and a ring *en suite*, set with round diamonds and reverse-set sapphires, *size 7½*; each signed *Graff*. With three signed boxes.

US\$ 20,000-30,000



269

DIAMOND RING, BULGARI

Horizontally-set with a pear-shaped diamond, within a surround of pavé-set round diamonds, size 5½, signed Bulgari, with Italian registry and assay marks.

US\$ 15,000-20,000



270

**PROPERTY OF A BEVERLY HILLS COLLECTOR
PAIR OF CITRINE, TOURMALINE AND
DIAMOND 'MAMMA PESCE' EARCLIPS,
BULGARI**

Designed as a pair of fish each suspending three smaller fish, set with cabochon citrines and round diamonds, highlighted with calibré-cut green tourmalines, signed Bulgari, numbered BA 7707, with Italian registry and assay marks. With signed box.

LITERATURE

For a pair of earclips of similar design, see Bulgari 125 Years of Italian Magnificence by Amanda Triossi, page 254.

US\$ 8,000-12,000

271

PROPERTY OF A LADY

**GOLD AND EMERALD CUFF-BRACELET,
DAVID WEBB**

Of hinged design, composed of hammered gold and featuring a textured gold frog, set with cabochon emerald eyes, gross weight approximately 71 dwts, *internal circumference 6¼ inches, signed Webb.*

US\$ 8,000-12,000



□ 272 SOLD WITHOUT RESERVE

**FANCY COLORED DIAMOND AND
DIAMOND RING**

Centering a round Fancy Deep Brownish Greenish Yellow diamond weighing 2.04 carats, accented by square-cut diamonds, size 7¼.

Accompanied by GIA report no. 2191909547 dated December 28, 2018 stating that the diamond is Fancy Deep Brownish Greenish Yellow, Natural Color, SI2 clarity, with Excellent Polish and Symmetry.

US\$ 12,000-15,000



PROPERTY OF THE HEIRESS OF AN AMERICAN
AUTOMOBILE MANUFACTURER

**PAIR OF EMERALD AND DIAMOND
EARCLIPS**

Set with two square cushion-cut emeralds weighing 3.40 and 3.09 carats, framed with round diamonds and each accented with a pear-shaped diamond.

Accompanied by AGL report no. 1103891 A and B dated October 2, 2019 stating that the emeralds are of Colombian origin, clarity enhancement: moderate, type: modern.

US\$ 10,000-15,000



DIAMOND RING, CARTIER, FRANCE

Of crossover design, pavé-set with two sections of round diamonds, size 7½, signed Cartier, numbered 81094A, with French assay and workshop marks.

US\$ 6,000-8,000

275

PROPERTY OF A PALM BEACH, FLORIDA
COLLECTOR

DIAMOND RING

Set with a pear-shaped diamond weighing 6.10 carat,
between tapered baguette diamonds, size 6¾.

*Accompanied by GIA report no. 2205655622
dated October 10, 2019 stating that the diamond
is F color, SI2 clarity.*

US\$ 30,000-50,000



276

PROPERTY OF THE HEIRESS OF AN AMERICAN
AUTOMOBILE MANUFACTURER

**EMERALD AND DIAMOND BRACELET,
H. STERN**

Set with 16 oval-shaped emeralds, framed
and accented by round and marquise-shaped
diamonds, *length 7 inches.*

US\$ 8,000-12,000

**DIAMOND RING**

Featuring a square emerald-cut diamond weighing 6.48 carats, size 5¾.

Accompanied by GIA report no. 5202357221 dated June 6, 2019 stating that the diamond is J color, SI1 clarity.

US\$ 35,000-55,000



PROPERTY OF A PRIVATE COLLECTOR

PAIR OF NATURAL PEARL AND DIAMOND EARCLIPS

Set with old European, single-cut and baguette diamonds suspending two natural pearls, one light gray and drop-shaped measuring approximately 9.8 mm, the other gray and oval-shaped measuring approximately 9.2 mm. Fitted with posts.

Accompanied by GIA report no. 6193667698 dated October 3, 2018 stating that the pearls are natural, saltwater.

US\$ 15,000-20,000

EMERALD AND DIAMOND RING

Centering an emerald-cut emerald weighing approximately 6.00 carats, within a double frame of round, baguette and marquise-shaped diamonds, size 7¼.

US\$ 10,000-15,000



280
PAIR OF CULTURED PEARL AND DIAMOND 'HIMALIA' PENDANT-EARCLIPS, CARTIER, FRANCE

Designed as lines of round diamonds accented with diamond-set circular motifs, embellished with white cultured pearls measuring approximately 6.4 and 6.3 mm, and drop-shaped black cultured pearls measuring approximately 13.0 x 11.7 and 12.9 x 11.7 mm, *signed Cartier, numbered 58360B, with French assay and workshop marks*. Fitted with posts.

US\$ 15,000-20,000

PROPERTY FROM A PRIVATE FAMILY
COLLECTION, NEW CANAAN, CONNECTICUT

DIAMOND RING

Set with a marquise-shaped diamond weighing
3.12 carats, accented by round diamonds, size 1¾.

*Accompanied by GIA report no. 2205544493
dated August 26, 2019 stating that the diamond is
K color, SI1 clarity.*

US\$ 7,000-9,000



282 SOLD WITHOUT RESERVE

PROPERTY OF A BEVERLY HILLS COLLECTOR
**STEEL 'TUBOGAS' BRACELET-WATCH,
BULGARI**

Composed of a coiled tubogas bracelet,
terminating in a round black dial with Arabic
numerals and baton indicators, quartz
movement, *internal circumference expandable,
bezel, case back and bracelet signed Bulgari, case
back numbered BB 19 ITS and D 299151, bracelet
numbered C100.*

US\$ 4,000-6,000





□ 283 SOLD WITHOUT RESERVE

PROPERTY OF A BEVERLY HILLS COLLECTOR

**PAIR OF TITANIUM EARCLIPS, JAR,
PARIS**

Designed as hinged fans composed of titanium with a deep red brushed finish. *signed JAR Paris, numbered 114.* With signed pouch.

US\$ 3,000-5,000

PROPERTY FROM A PRIVATE COLLECTION,
LYNCHBURG, VIRGINIA

EMERALD AND DIAMOND RING

Centering a square step-cut emerald weighing 3.81 carats, within a frame of baguette and step-cut diamonds, size 9.

Accompanied by AGL report no. 1103456 dated September 9, 2019 stating that the emerald is of Colombian origin, clarity enhancement: minor, type: traditional.

US\$ 8,000-12,000



PROPERTY FROM A SAN FRANCISCO PRIVATE
COLLECTION

PAIR OF DIAMOND PENDANT-EARCLIPS

Of ribbon design, set with round and single-cut diamonds, suspending tassels composed of round and baguette diamonds. Fitted with posts.

US\$ 6,000-8,000



286

PROPERTY FROM A MIDWEST ESTATE

DIAMOND PENDANT-NECKLACE

Suspending a pear-shaped diamond weighing 2.84 carats, set between two tapered baguette diamonds, on a fine link chain, length 17¼ inches.

Accompanied by GIA report no. 5202581741 dated September 13, 2019 stating that the diamond is D color, SI2 clarity.

US\$ 8,000-12,000



287

PROPERTY OF A PRIVATE COLLECTOR,
ESTER, ALASKA

DIAMOND RING

Centering an emerald-cut diamond weighing 2.68 carats, flanked by graduated baguette diamonds, size 7¼.

Accompanied by GIA report no. 2201538899 dated August 22, 2019 stating that the diamond is F color, VS2 clarity.

US\$ 10,000-15,000



288



PROPERTY OF A LADY

**PINK SAPPHIRE AND DIAMOND RING,
TAFFIN**

Of bombé design, centering an oval-shaped pink sapphire weighing approximately 4.00 carats, within a surround of reverse-set round diamonds, size 6¼, signed *Taffin*, numbered TF2132.

US\$ 15,000-20,000



289

**DIAMOND 'SERPENT' BRACELET,
BULGARI**

Of sprung design, pavé-set with round diamonds, gross weight approximately 41 dwts, *internal circumference expandable*, signed *Bulgari*, numbered FSK3V5, with Italian assay and registry marks.

US\$ 25,000-35,000

290

PAIR OF DIAMOND EARCLIPS, FRANCE

Designed as ribbons pavé-set with old European and Swiss-cut diamonds, accented by lines of baguette diamonds, *with French assay and workshop marks.*

US\$ 7,000-9,000



291

PROPERTY OF A NEW YORK LADY

DIAMOND RING

Centering a pear-shaped diamond weighing 3.94 carats, set between two tapered baguette diamonds, size 6.

Accompanied by GIA report no. 2201531515 dated August 21, 2019 stating that the diamond is D color, VS1 clarity.

US\$ 35,000-45,000





292

**GOLD, TURQUOISE AND DIAMOND
NECKLACE AND BRACELET, VAN CLEEF
& ARPELS, FRANCE**

Composed of criss-crossed gold ropetwist links, set with turquoise cabochons, interspersed with round diamonds, gross weight approximately 92 dwts, *necklace length 15 inches, bracelet length 7 inches, signed V.C.A., necklace numbered B6509, bracelet numbered 15097, with French assay and workshop marks.*

US\$ 10,000-15,000

293

PROPERTY FROM THE ESTATE OF
SUSAN S. DILLON

**PAIR OF GOLD 'ONDA' EARCLIPS,
MARINA B, FRANCE**

Designed as hoops featuring a scalloped pattern,
*signed Marina B, with French assay and workshop
marks.*

US\$ 1,800-2,200



294

**GOLD AND DIAMOND BRACELET,
DAVID WEBB**

Composed of polished gold oval-shaped links,
accented at intervals by round diamonds,
*gross weight approximately 39 dwts, internal
circumference 7 inches, signed Webb.*

US\$ 8,000-12,000



295

**PAIR OF GOLD AND DIAMOND
PENDANT-EARCLIPS, VAN CLEEF &
ARPELS, FRANCE**

Of stylized floral design, set with clusters of round diamonds, *pendants detachable, the surmounts with retractable pins for wear as clips, signed Van Cleef et Arpels, numbered 66935, with French assay and workshop marks. With signed box.*

US\$ 10,000-15,000



296

PROPERTY FROM A PRIVATE FAMILY
COLLECTION, KEY WEST, FLORIDA

DIAMOND RING

Set with a round diamond weighing 3.23 carats, flanked by triangle-shaped diamonds, bordered by baguette and tapered baguette diamonds, size 7½.

Accompanied by GIA report no. 5202619447 dated September 27, 2019 stating that the diamond is J color, SI1 clarity.

US\$ 12,000-18,000



297

PROPERTY OF A LADY, LAKE FOREST, ILLINOIS
**PAIR OF CULTURED PEARL AND
DIAMOND EARCLIPS, SCHLUMBERGER
FOR TIFFANY & CO.**

Each centering a round cultured pearl measuring approximately 9.0 mm, within a foliate mounting set with round diamonds, *signed Tiffany Schlumberger*.

US\$ 4,000-6,000



298

**GOLD AND DIAMOND BRACELET,
VAN CLEEF & ARPELS, FRANCE**

Composed of a series of fan-like gold links, each centering a cluster of round diamonds, gross weight approximately 59 dwts, *length 7¾ inches*, *signed Van Cleef et Arpels*, numbered 66731, with French assay marks. With signed pouch.

A bracelet of similar design was sold in Sotheby's New York, November 20, 2014, Property from the Collection of Mrs. Paul Mellon, lot 16.

US\$ 20,000-30,000



299

PROPERTY OF A BEVERLY HILLS COLLECTOR

**PAIR OF FANCY LIGHT YELLOW
DIAMOND STUDS**

Set with two cut-cornered square modified brilliant-cut Fancy Light Yellow diamonds weighing 6.86 and 6.79 carats.

Accompanied by two GIA reports:

No. 5202566723 dated September 7, 2019 stating that the diamond weighing 6.86 carats is Fancy Light Yellow, Natural Color, VS2 clarity.

No. 6207566700 dated September 9, 2019 stating that the diamond weighing 6.79 carats is Fancy Light Yellow, Natural Color, I2 clarity.

US\$ 40,000-60,000



300

PROPERTY FROM A PRIVATE COLLECTION,
NEW YORK, NEW YORK

**PAIR OF EMERALD AND DIAMOND
EARCLIPS**

Of cluster design, set to the centers with oval-shaped emeralds, framed by marquise and pear-shaped diamonds.

US\$ 6,000-8,000





301

**GOLD CUFF-BRACELET,
KIESELSTEIN-CORD**

Designed as a gold alligator, gross weight approximately 98 dwts, *internal circumference 6 $\frac{3}{8}$ inches, signed B.Kieselstein-Cord, numbered 988.*

US\$ 7,500-10,000



PROPERTY OF A LADY

**PAIR OF CULTURED PEARL AND
DIAMOND EARCLIPS, VAN CLEEF &
ARPELS**

Designed as floral clusters of cultured pearls and round and marquise-shaped diamonds, the stem accented by baguette diamonds, *partially signed Van Cleef & Arpels N.Y.*

US\$ 6,000-8,000



303 SOLD WITHOUT RESERVE

PROPERTY OF A LADY

**PINK TOURMALINE, EMERALD AND
SAPPHIRE CLIP-BROOCH, SEAMAN
SCHEPPS**

Designed as a cluster of stylized fruit, featuring a carved pink tourmaline, surmounted by two carved emeralds and one cabochon emerald, accented by two cabochon sapphires, *signed Seaman Schepps.*

US\$ 3,000-4,000

PROPERTY OF A LADY

**CULTURED PEARL, SHELL AND
DIAMOND 'NAUTILUS' NECKLACE,
SEAMAN SCHEPPS**

Composed of two strands of white cultured pearls measuring from approximately 11.5 to 7.8 mm, and a strand of black cultured pearls measuring from approximately 14.0 x 6.4 mm, completed by a clasp set with a nautilus shell accented by round diamonds, *internal circumference 18¾ inches, signed Seaman Schepps.*

Please note this lot cannot be shipped internationally due to endangered species materials.

● US\$ 6,000-8,000



□ **305** SOLD WITHOUT RESERVE

PROPERTY OF A LADY

**SAPPHIRE, AMETHYST AND DIAMOND
RING AND PAIR OF EARCLIPS**

Designed as clusters, each set with one sapphire and two amethyst cabochons, accented by a round diamond, *ring size 7*.

US\$ 3,000-4,000

306

PROPERTY OF A LADY

**PINK TOURMALINE, SAPPHIRE,
CULTURED PEARL AND DIAMOND
NECKLACE, SEAMAN SCHEPPS**

Composed of three strands of cultured pearls measuring approximately 8.9 to 8.4 mm, centering a cabochon pink tourmaline measuring approximately 30.9 x 30.9 x 15.3, flanked by six oval-shaped sapphires, accented by round diamonds, the clasp adorned with a carved pink tourmaline, *internal circumference 15¼ inches, signed Seaman Schepps*.

US\$ 8,000-12,000

END OF SALE



305



306

For your urban oasis

Your home is more than a building or an address. It's where you experience life, family, connection, growth. Your home should be as exceptional as you are, and as you are going to be. For a lifestyle inspired by your potential, there is only Sotheby's International Realty.

— Only —
Sotheby's
INTERNATIONAL REALTY

sothebysrealty.com | New York, New York | Property ID: HW83LV

Property from a Distinguished
Private Collection

JEAN ROYERE
Table *Semelle*, circa 1948
Estimate \$200,000–300,000



Important Design

AUCTION NEW YORK 12 DECEMBER

EXHIBITION FREE AND OPEN TO THE PUBLIC 7–11 DECEMBER

1334 YORK AVENUE, NEW YORK, NY 10021
ENQUIRIES +1 212 606 7170 20THCENTURYDESIGN@SOTHEBYS.COM
SOTHEBYS.COM/DESIGN #SOTHEBYSDESIGN



DOWNLOAD SOTHEBY'S APP
FOLLOW US @SOTHEBYSJEWELS

CONDITIONS OF SALE

The following Conditions of Sale and Terms of Guarantee are Sotheby's, Inc. and the Consignor's entire agreement with the purchaser and any bidders relative to the property listed in this catalogue.

The Conditions of Sale, Terms of Guarantee, the glossary, if any, and all other contents of this catalogue are subject to amendment by us by the posting of notices or by oral announcements made during the sale. The property will be offered by us as agent for the Consignor, unless the catalogue indicates otherwise.

By participating in any sale, you acknowledge that you are bound by these terms and conditions.

1. **As Is** Goods auctioned are often of some age. The authenticity of the Authorship (as defined below) of property listed in the catalogue is guaranteed as stated in the Terms of Guarantee and except for the Limited Warranty contained therein, all property is sold "AS IS" without any representations or warranties by us or the Consignor as to merchantability, fitness for a particular purpose, the correctness of the catalogue or other description of the physical condition, size, quality, rarity, importance, medium, frame, provenance, exhibitions, literature or historical relevance of any property and no statement anywhere, whether oral or written, whether made in the catalogue, an advertisement, a bill of sale, a salesroom posting or announcement, or elsewhere, shall be deemed such a warranty, representation or assumption of liability. We and the Consignor make no representations and warranties, express or implied, as to whether the purchaser acquires any copyrights, including but not limited to, any reproduction rights in any property. We and the Consignor are not responsible for errors and omissions in

the catalogue, glossary, or any supplemental material. Sotheby's will not be responsible or liable for damage to frames and glass coverings, regardless of the cause.

2. **Inspection** Prospective bidders should inspect the property before bidding to determine its condition, size, and whether or not it has been repaired or restored.

3. **Buyer's Premium** A buyer's premium will be added to the hammer price and is payable by the purchaser as part of the total purchase price. The buyer's premium is 25% of the hammer price up to and including \$400,000, 20% of any amount in excess of \$400,000 up to and including \$4,000,000, and 13.9% of any amount in excess of \$4,000,000.

4. **Withdrawal** We reserve the right to withdraw any property before the sale and shall have no liability whatsoever for such withdrawal.

5. **Per Lot** Unless otherwise announced by the auctioneer, all bids are per lot as numbered in the catalogue.

6. **Bidding** We reserve the right to reject any bid. The highest bidder acknowledged by the auctioneer will be the purchaser. The auctioneer has absolute and sole discretion in the case of error or dispute with respect to bidding, and whether during or after the sale, to determine the successful bidder, to re-open the bidding, to cancel the sale or to re-offer and re-sell the item in dispute. If any dispute arises after the sale, our sale record is conclusive. In our discretion we will execute order or absentee bids and accept telephone bids and online bids via the Online Platforms as a convenience to clients who are not present at auctions; Sotheby's is not responsible for any errors or omissions in connection therewith. Prospective bidders should also consult sothebys.com for the most up to date cataloguing of the property in this catalogue.

By participating in the sale, you represent and warrant that any bids placed by you, or on your behalf, are not the product of any collusive or other anti-competitive agreement and are otherwise consistent with federal and state antitrust law.

By participating in the sale, you represent and warrant that:

(a) The bidder and/or purchaser is not subject to trade sanctions, embargoes or any other restriction on trade in the jurisdiction in which it does business as well as under the laws of the European Union, the laws of England and Wales, or the laws and regulations of the United States, and is not owned (nor partly owned) or controlled by such sanctioned person(s) (collectively, "Sanctioned Person(s)");

(b) Where acting as agent (with Sotheby's prior written consent), the principal is not a Sanctioned Person(s) nor owned (or partly owned) or controlled by Sanctioned Person(s); and

(c) The bidder and/or purchaser undertakes that none of the purchase price will be funded by any Sanctioned Person(s), nor will any party be involved in the transaction including financial institutions, freight forwarders or other forwarding agents or any other party be a Sanctioned Person(s) nor owned (or partly owned) or controlled by a Sanctioned Person(s), unless such activity is authorized in writing by the government authority having jurisdiction over the transaction or in applicable law or regulation.

In order to bid on "Premium Lots" you must complete the required Premium Lot pre-registration application. Sotheby's decision whether to accept any pre-registration application shall be final. You must arrange for Sotheby's to receive your pre-registration application at least three working days before the sale. Please bear in mind that we are unable to obtain financial references over weekends or public holidays.

Sotheby's may require such necessary financial references, guarantees, deposits and/or such other security, in its absolute discretion, as security for your bid(s).

7. **Online Bids via an Online Platform** Sotheby's may offer clients the opportunity to bid on sothebys.com or through the Sotheby's App, or on any other online platform through which bidding may be made available for selected sales. By participating in a sale via any of the Online Platforms, you acknowledge that you are bound by these Conditions of Sale as well as the Additional Terms and Conditions for Online Bidding ("Online Terms"). By participating in a sale via any Online Platform, Bidders accept the Online Terms, as well as the relevant Conditions of Sale. Online bidding may not be available for Premium Lots.

8. **Bids Below Reserve** If the auctioneer determines that any opening bid is below the reserve of the article offered, he may reject the same and withdraw the article from sale, and if, having acknowledged an opening bid, he determines that any advance thereafter is insufficient, he may reject the advance.

9. **Purchaser's Responsibility** Subject to fulfillment of all of the conditions set forth herein, on the fall of the auctioneer's hammer, the contract between the consignor and the purchaser is concluded, and the winning bidder thereupon will immediately pay the full purchase price or such part as we may require. Title in a purchased lot will not pass until Sotheby's has received the full purchase price in cleared funds. The purchaser's obligation to immediately pay the full purchase price or such part as we may require is absolute and unconditional and is not subject to any defenses, setoffs or counterclaims of any kind whatsoever. Sotheby's is not obligated to release a lot to the purchaser until title to the lot has passed and any earlier release

does not affect the passing of title or the purchaser's unconditional obligation to pay the full purchase price. In addition to other remedies available to us by law, we reserve the right to impose from the date of sale a late charge of the annual percentage rate of Prime + 6% of the total purchase price if payment is not made in accordance with the conditions set forth herein. Please note Sotheby's reserves the right to refuse to accept payment from a source other than the buyer of record.

Unless otherwise agreed by Sotheby's, all property must be removed from our premises by the purchaser at his expense not later than 30 calendar days following its sale. Purchasers are reminded that Sotheby's liability for loss of or damage to sold property shall cease upon the earlier of (a) 30 calendar days after the date of the auction and (b) our release of the property to the purchaser or the purchaser's designated agent. Upon the expiration of such 30 calendar day period or upon such earlier release, as applicable: (i) the purchaser bears full liability for any and all loss of or damage to the property; (ii) the purchaser releases Sotheby's, its affiliates, agents and warehouses from any and all liability and claims for loss of or damage to the property; and (iii) the purchaser agrees to indemnify and hold Sotheby's, its affiliates, agents and warehouses harmless from and against any and all liability for loss of or damage to property and any all claims related to loss of or damage to the property as of and from and after the time Sotheby's liability for loss or damage to the property ceases in accordance with this paragraph. If any applicable conditions herein are not complied with by the purchaser, the purchaser will be in default and in addition to any and all other remedies available to us and the Consignor by law, including, without limitation, the right to hold the purchaser liable for the total purchase price, including all fees, charges and expenses more fully set forth herein, we, at our

option, may (x) cancel the sale of that, or any other lot or lots sold to the defaulting purchaser at the same or any other auction, retaining as liquidated damages all payments made by the purchaser, or (y) resell the purchased property, whether at public auction or by private sale, or (z) effect any combination thereof. In any case, the purchaser will be liable for any deficiency, any and all costs, handling charges, late charges, expenses of both sales, our commissions on both sales at our regular rates, legal fees and expenses, collection fees and incidental damages. We may, in our sole discretion, apply any proceeds of sale then due or thereafter becoming due to the purchaser from us or any affiliated company, or any payment made by the purchaser to us or any affiliated company, whether or not intended to reduce the purchaser's obligations with respect to the unpaid lot or lots, to the deficiency and any other amounts due to us or any affiliated companies. In addition, a defaulting purchaser will be deemed to have granted and assigned to us and our affiliated companies, a continuing security interest of first priority in any property or money of or owing to such purchaser in our possession, custody or control or in the possession, custody or control of any of our affiliated companies, in each case whether at the time of the auction, the default or if acquired at any time thereafter, and we may retain and apply such property or money as collateral security for the obligations due to us or to any affiliated company of ours. We shall have all of the rights accorded a secured party under the New York Uniform Commercial Code. You hereby agree that Sotheby's may file financing statements under the New York Uniform Commercial Code without your signature. Payment will not be deemed to have been made in full until we have collected good funds. Any claims relating to any purchase, including any claims under the

Conditions of Sale or Terms of Guarantee, must be presented directly to Sotheby's. In the event the purchaser fails to pay any or all of the total purchase price for any lot and Sotheby's nonetheless elects to pay the Consignor any portion of the sale proceeds, the purchaser acknowledges that Sotheby's shall have all of the rights of the Consignor to pursue the purchaser for any amounts paid to the Consignor, whether at law, in equity, or under these Conditions of Sale.

10. Reserve All lots in this catalogue are offered subject to a reserve, which is the confidential minimum hammer price at which a lot will be sold. No reserve will exceed the low presale estimate stated in the catalogue, or as amended by oral or posted notices. We may implement such reserve by opening the bidding on behalf of the Consignor and may bid up to the amount of the reserve, by placing successive or consecutive bids for a lot, or bids in response to other bidders. In instances where we have an interest in the lot other than our commission, we may bid up to the reserve to protect such interest. In certain instances, the Consignor may pay us less than the standard commission rate where a lot is "bought-in" to protect its reserve.

11. Tax Unless exempted by law, the purchaser will be required to pay the combined New York State and local sales tax, any applicable compensating use tax of another state, and if applicable, any federal luxury or other tax, on the total purchase price. The rate of such combined tax is 8.875% in New York City and ranges from 7% to 8.625% elsewhere in New York.

12. Export and Permits It is the purchaser's sole responsibility to identify and obtain any necessary export, import, firearm, endangered species or other permit for the lot. Any symbols or notices in the sale catalogue reflect Sotheby's reasonable opinion at the time of cataloguing and are for bidders'

general guidance only; Sotheby's and the Consignor make no representations or warranties as to whether any lot is or is not subject to export or import restrictions or any embargoes.

13. Governing Law and Jurisdiction These Conditions of Sale and Terms of Guarantee, as well as bidders', the purchaser's and our respective rights and obligations hereunder, shall be governed by and construed and enforced in accordance with the laws of the State of New York. By bidding at an auction, whether present in person or by agent, order or absentee bid, telephone, online or other means, all bidders including the purchaser, shall be deemed to have consented to the exclusive jurisdiction of the state courts of, and the federal courts sitting in, the State of New York. All parties agree, however, that Sotheby's shall retain the right to bring proceedings in a court other than the state and federal courts sitting in the State of New York.

14. Packing and Shipping We are not responsible for the acts or omissions in our packing or shipping of purchased lots or of other carriers or packers of purchased lots, whether or not recommended by us. Packing and handling of purchased lots is at the entire risk of the purchaser.

15. Limitation of Liability In no event will the aggregate liability of Sotheby's and the consignor to a purchaser exceed the purchase price actually paid.

16. Data Protection Sotheby's will hold and process your personal information and may share it with its subsidiaries and affiliates for use as described in, and in line with, Sotheby's Privacy Policy published on Sotheby's website at www.sothebys.com or available on request by email to enquiries@sothebys.com.

Under European data protection laws, a client may object, by request and free of charge, to the processing of their information

for certain purposes, including direct marketing, and may access and rectify personal data relating to them and may obtain more information about Sotheby's data protection policies by writing to Sotheby's, 34-35 New Bond Street, London W1A 2AA, or 1334 York Avenue, New York, NY 10021, Attn: Compliance, or emailing enquiries@sothebys.com.

Please be aware that Sotheby's may film auctions or other activities on Sotheby's premises and that such recordings may be transmitted over the Internet via Sotheby's website and other online platforms. Online and telephone bids may be recorded.

TERMS OF GUARANTEE

As set forth below and in the Conditions of Sale, for all lots Sotheby's guarantees that the authorship, period, culture or origin (collectively, "Authorship") of each lot in this catalogue is as set out in the BOLD or CAPITALIZED type heading in the catalogue description of the lot, as amended by oral or written salesroom notes or announcements. Purchasers should refer to the Glossary of Terms, if any, for an explanation of the terminology used in the Bold or Capitalized type heading and the extent of the Guarantee. Sotheby's makes no warranties whatsoever, whether express or implied, with respect to any material in the catalogue other than that appearing in the Bold or Capitalized heading and subject to the exclusions below.

In the event Sotheby's in its reasonable opinion deems that the conditions of the Guarantee have been satisfied, it shall refund to the original purchaser of record the hammer price and applicable Buyer's Premium paid for the lot by the original purchaser of record.

This Guarantee is provided for a period of five (5) years from the date of the relevant auction, is solely for the benefit of the

original purchaser of record at the auction and may not be transferred to any third party. To be able to claim under this Guarantee of Authorship, the original purchaser of record must: (i) notify Sotheby's in writing within three (3) months of receiving any information that causes the original purchaser of record to question the accuracy of the Bold or Capitalized type heading, specifying the lot number, date of the auction at which it was purchased and the reasons for such question; and (ii) return the Lot to Sotheby's at the original selling location in the same condition as at the date of sale to the original purchaser of record and be able to transfer good title to the Lot, free from any third party claims arising after the date of such sale.

Sotheby's has discretion to waive any of the above requirements. Sotheby's may require the original purchaser of record to obtain at the original purchaser of record's cost the reports of two independent and recognized experts in the field, mutually acceptable to Sotheby's and the original purchaser of record. Sotheby's shall not be bound by any reports produced by the original purchaser of record, and reserves the right to seek additional expert advice at its own expense. It is specifically understood and agreed that the rescission of a sale and the refund of the original purchase price paid (the successful hammer price, plus the buyer's premium) is exclusive and in lieu of any other remedy which might otherwise be available as a matter of law, or in equity. Sotheby's and the Consignor shall not be liable for any incidental or consequential damages incurred or claimed, including without limitation, loss of profits or interest.

ADDITIONAL TERMS AND CONDITIONS FOR ONLINE BIDDING

The following terms and conditions (the "Online Terms") provide important information related to online bidding on sothebys.com or through the Sotheby's App, or on any other online platform through which bidding may be made available ("Online Platforms").

These Conditions are in addition to and subject to the same law and our standard terms and conditions of sale, including the authenticity guarantee and any other terms and are not intended in any way to replace them. By participating in this sale via any Online Platform, you acknowledge that you are bound by the Conditions of Sale applicable in the relevant sale and by these additional Conditions.

1. For certain sales, bidders are welcome to submit bids in advance of the live auction ("Advance Bids") through the Online Platforms. In order to do so, you must register an account with Sotheby's and provide requested information. You may bid at or above the starting bid displayed on the Online Platforms. Please note that we reserve the right to lower the starting bid prior to the start of the live auction.

For sales where you can place Advance Bids, you may also input a maximum bid which, upon confirmation, will be executed automatically up to this predefined maximum value in response to other bids including bids placed by Sotheby's on behalf of the seller, up to the amount of the reserve (if applicable). Please note that reserves may be set at any time before the start of the live auction and your maximum bid may be executed against the reserve once such reserve is set.

The current leading bid will be visible to all bidders; the value and status of your maximum bid will be visible only to you, unless it is the leading bid. If the status of your bid changes,

you will receive notifications via email and push (if you have the Sotheby's App installed) leading up to the live auction. You may raise your maximum bid at any time in advance of the live auction. Once the live auction begins, the auctioneer will open bidding at the current leading bid. The system will continue to bid on your behalf up to your predetermined maximum bid, or you may continue to bid via the Online Platforms during the live auction at the next increment. Upon the closing of each lot, you will receive another email and push notification indicating whether you have won or lost each lot on which you have placed a bid.

By placing Advance Bids on the Online Platforms, you accept and agree that any such bids are final, that you will not be permitted to retract your bid, and that, should your bid be successful, you irrevocably agree to pay the full purchase price, including buyer's premium and all applicable taxes and other applicable charges. You may nevertheless lower your maximum bid leading up to the live auction by contacting the Bids Department at +1 212 606 7414, except that you may not lower it to a level lower than the current leading bid.

2. Once it commences, a live auction is by its nature fast-moving and bidding may progress very quickly. The procedure for placing bids during the live auction is therefore a one-step process; as soon as the "Place Bid" button is clicked, a bid is submitted. By bidding online, you accept and agree that bids submitted in this way are final and that you will not under any circumstances be permitted to amend or retract your bid. If a successful bid is sent to Sotheby's from your computer, electronic or mobile device, you irrevocably agree to pay the full purchase price, including buyer's premium and all applicable taxes and other applicable charges.

3. The next bidding increment is shown for your convenience. The auctioneer has discretion to vary Increments for bidders

in the auction room and on the telephone, but bidders using Online Platforms may not be able to place a bid in an amount other than a whole bidding increment. All bidding for this sale will be in U.S. Dollars, in respect of New York sales, in Pounds Sterling, in respect of London sales, or in Hong Kong Dollars, in respect of Hong Kong sales, and online bidders will not be able to see the currency conversion board that may be displayed in the auction room.

4. The record of sale kept by Sotheby's will be taken as absolute and final in all disputes. In the event of a discrepancy between any online records or messages provided to you and the record of sale kept by Sotheby's, the record of sale will govern.

5. Online bidders are responsible for making themselves aware of all salesroom notices and announcements, which will be accessible on the Online Platforms.

6. Sotheby's reserves the right to refuse or revoke permission to bid via Online Platforms and to remove bidding privileges during a sale.

7. The purchase information shown in the "My Bids" section of the Sotheby's App and in the "Account Activity" section of "My Account" on Sothebys.com is provided for your convenience only. Successful bidders will be notified and invoiced after the sale. In the event of any discrepancy between the online purchase information and the invoice sent to you by Sotheby's following the sale, the invoice prevails. Terms and conditions for payment and collection of property remain the same regardless of how the winning bid was submitted.

8. Sotheby's offers online bidding as a convenience to our clients. Sotheby's is not responsible for any errors or failures to execute bids placed online, including, without limitation, errors or failures caused by (i) a loss of connection to the internet or to the online bidding software by

either Sotheby's or the client; (ii) a breakdown or problems with the online bidding software; or (iii) a breakdown or problems with a client's internet connection, computer or electronic device. Sotheby's is not responsible for any failure to execute an online bid or for any errors or omissions in connection therewith.

9. Online bidding will be recorded.

10. In the event of any conflict between these Online Terms and Sotheby's Conditions of Sale and Terms of Guarantee, Sotheby's Conditions of Sale and Terms of Guarantee will control.

BUYING AT AUCTION

The following will help in understanding the auction buying process as well as some of the terms and symbols commonly used in an auction catalogue. All bidders should read the Conditions of Sale and Terms of Guarantee in this catalogue, as well as the Glossary or any other notices. By bidding at auction, bidders are bound by the Conditions of Sale and Terms of Guarantee, as amended by any oral announcement or posted notices, which together form the sale contract among Sotheby's, the seller (consignor) of the lot and any bidders, including the successful bidder (purchaser).

1. SYMBOL KEY

□ Reserves

Unless indicated by a box (□), all lots in this catalogue are offered subject to a reserve. A reserve is the confidential minimum hammer price at which a lot will be sold. The reserve is generally set at a percentage of the low estimate and will not exceed the low estimate of the lot. If any lots in the catalogue are offered without reserve, such lots will be designated by a box (□). If every lot in a catalogue is offered without a reserve, the Conditions of Sale will so state and this symbol will not be used for each lot.

○ Guaranteed Property

The seller of lots with this symbol has been guaranteed a minimum price from one auction or a series of auctions. This guarantee may be provided by Sotheby's or jointly by Sotheby's and a third party. Sotheby's and any third parties providing a guarantee jointly with Sotheby's benefit financially if a guaranteed lot is sold successfully and may incur a loss if the sale is not successful. If the Guaranteed Property symbol for a lot is not included in the printing of the auction catalogue, a pre-sale or pre-lot announcement will be made indicating that there is a guarantee on the lot.

△ Property in which Sotheby's has an Ownership Interest

Lots with this symbol indicate that Sotheby's owns the lot in whole or in part or has an economic interest in the lot equivalent to an ownership interest.

≡ Irrevocable Bids

Lots with this symbol indicate that a party has provided Sotheby's with an irrevocable bid on the lot that will be executed during the sale at a value that ensures that the lot will sell. The irrevocable bidder, who may bid in excess of the irrevocable bid, may be compensated for providing the irrevocable bid by receiving a contingent fee, a fixed fee or both. From time to time, a Sotheby's shareholder may be an irrevocable bidder. If the irrevocable bidder is the successful bidder, any contingent fee, fixed fee or both (as applicable) for providing the irrevocable bid may be netted against the irrevocable bidder's obligation to pay the full purchase price for the lot and the purchase price reported for the lot shall be net of any such fees. From time to time, Sotheby's may enter into irrevocable bid agreements that cover multiple lots. In such instances, the compensation Sotheby's will pay the irrevocable bidder is allocated to the lots for which the irrevocable bidder is not the successful purchaser. Under such circumstances,

the total compensation to the irrevocable bidder will not exceed the total buyer's premium and other amounts paid to Sotheby's in respect of any lots for which the irrevocable bidder is not the successful bidder. If the irrevocable bid is not secured until after the printing of the auction catalogue, Sotheby's will notify bidders that there is an irrevocable bid on the lot by one or more of the following means: a pre-sale or pre-lot announcement, by written notice at the auction or by including an irrevocable bid symbol in the e-catalogue for the sale prior to the auction. From time to time, Sotheby's or any affiliated company may provide the irrevocable bidder with financing related to the irrevocable bid. In addition, from time to time, an irrevocable bidder may have knowledge of the amount of a guarantee. If the irrevocable bidder is advising anyone with respect to the lot, Sotheby's requires the irrevocable bidder to disclose his or her financial interest in the lot. If an agent is advising you or bidding on your behalf with respect to a lot identified as being subject to an irrevocable bid, you should request that the agent disclose whether or not he or she has a financial interest in the lot.

▽ Interested Parties

Lots with this symbol indicate that parties with a direct or indirect interest in the lot may be bidding on the lot, including (i) the beneficiary of an estate selling the lot, or (ii) the joint owner of a lot. If the interested party is the successful bidder, they will be required to pay the full Buyer's Premium. In certain instances, interested parties may have knowledge of the reserve. In the event the interested party's possible participation in the sale is not known until after the printing of the auction catalogue, a pre-sale or pre-lot announcement will be made indicating that interested parties may be bidding on the lot.

Ⓞ Restricted Materials

Lots with this symbol have been identified at the time of cataloguing as containing organic material which may be subject to restrictions regarding import or export. The information is made available for the convenience of bidders and the absence of the symbol is not a warranty that there are no restrictions regarding import or export of the Lot; bidders should refer to Condition 12 of the Conditions of Sale. Please also refer to the section on Endangered Species in the information on Buying at Auction.

II Monumental

Lots with this symbol may, in our opinion, require special handling or shipping services due to size or other physical considerations. Bidders are advised to inspect the lot and to contact Sotheby's prior to the sale to discuss any specific shipping requirements.

📄 Premium Lot

In order to bid on "Premium Lots" (in print catalogue or ↔ in eCatalogue) you must complete the required Premium Lot pre-registration application. You must arrange for Sotheby's to receive your pre-registration application at least three working days before the sale. Please bear in mind that we are unable to obtain financial references over weekends or public holidays. Sotheby's decision whether to accept any pre-registration application shall be final. If your application is accepted, you will be provided with a special paddle number. If all lots in the catalogue are "Premium Lots", a Special Notice will be included to this effect and this symbol will not be used.

2. BEFORE THE AUCTION

Bidding in advance of the live auction. For certain sales, if you are unable to attend the auction in person, and wish to bid in advance of the live auction, you may do so on Sothebys.com or the Sotheby's App. In order to do so,

you must register an account with Sotheby's and provide requested information. Once you have done so, navigate to your desired lot, and click the "Place Bid" button. You may bid at or above the starting bid displayed on the Online Platforms. Please note that we reserve the right to lower the starting bid prior to the start of the live auction. You may also input your maximum bid which, upon confirmation, will be executed automatically up to this predefined maximum value, in response to other bids, including bids placed by Sotheby's on behalf of the seller, up to the amount of the reserve (if applicable). The current leading bid will be visible to all bidders; the value and status of your maximum bid will be visible only to you. If the status of your bid changes, you will receive notifications via email and push (if you have the Sotheby's App installed) leading up to the live auction. You may raise your maximum bid at any time in advance of the live auction. Once the live auction begins, the auctioneer will open bidding at the current leading bid. The system will continue to bid on your behalf up to your predetermined maximum bid, or you may continue to bid via the Online Platforms during the live auction at the next increment. Upon the closing of each lot in the live auction, you will receive another email and push notification indicating whether you have won or lost each lot on which you have placed a bid.

The Catalogue A catalogue prepared by Sotheby's is published for every scheduled live auction and is available prior to the sale date. The catalogue will help familiarize you with property being offered at the designated auction. Catalogues may be purchased at Sotheby's or by subscription in any categories. For information, please call +1 212 606 7000 or visit sothebys.com. Prospective bidders should also consult sothebys.com for the most up to date cataloguing of the property in this catalogue.

Estimates Each lot in the catalogue is given a low and high estimate, indicating to a prospective buyer a range in which the lot might sell at auction. When possible, the estimate is based on previous auction records of comparable pieces. The estimates are determined several months before a sale and are therefore subject to change upon further research of the property, or to reflect market conditions or currency fluctuations. Estimates should not be relied upon as a representation or prediction of actual selling prices.

Provenance In certain circumstances, Sotheby's may print in the catalogue the history of ownership of a work of art if such information contributes to scholarship or is otherwise well known and assists in distinguishing the work of art. However, the identity of the seller or previous owners may not be disclosed for a variety of reasons. For example, such information may be excluded to accommodate a seller's request for confidentiality or because the identity of prior owners is unknown given the age of the work of art.

Specialist Advice Prospective bidders may be interested in specific information not included in the catalogue description of a lot. For additional information, please contact either a Sotheby's specialist in charge of the sale (all of whom are listed in the front of the catalogue), or Sotheby's Client Services Department. You may also request a condition report from the specialist in charge.

The Exhibition An exhibition of the auction property will be held the week prior to the auction on the days listed in the front of the catalogue. There you will have the opportunity to view, inspect and evaluate the property yourself, or with the help of a Sotheby's specialist.

Salesroom Notices Salesroom notices amend the catalogue description of a lot after our catalogue has gone to press. They are posted in the viewing galleries and salesroom or are announced by the auctioneer. Salesroom notices are also posted on the Online Platform for those bidding online. Please take note of them.

Registration Sotheby's may require such necessary financial references, guarantees, deposits and/or such other security, in its absolute discretion, as security for your bid. If you are not successful on any lot, Sotheby's will arrange for a refund (subject to any right of set off) of the deposit amount paid by you without interest within 14 working days of the date of the sale. Any exchange losses or fees associated with the refund shall be borne by you. Registration to bid on Premium Lots must be done at least 3 business days prior to the sale.

3. DURING THE AUCTION

The Auction Auctions are open to the public without any admission fee or obligation to bid. The auctioneer introduces the objects for sale — known as "lots" — in numerical order as listed in the catalogue. Unless otherwise noted in the catalogue or by an announcement at the auction, Sotheby's acts as agent on behalf of the seller and does not permit the seller to bid on his or her own property. It is important for all bidders to know that the auctioneer may open the bidding on any lot by placing a bid on behalf of the seller. The auctioneer may further bid on behalf of the seller, up to the amount of the reserve, by placing responsive or consecutive bids for a lot. The auctioneer will not place consecutive bids on behalf of the seller above the reserve.

Bidding in Person If you would like to bid in person, you may register for a paddle prior to the live auction through the Online Platform or by contacting the

Bids Department. Alternatively, you may register for a paddle upon entering the salesroom. The paddle is numbered so as to identify you to the auctioneer. To register, you will need a form of identification such as a driver's license, a passport or some other type of government issued identification. If you are a first-time bidder, you will also be asked for your address, phone number and signature in order to create your account. If you are bidding for someone else, you will need to provide a letter from that person authorizing you to bid on that person's behalf. Issuance of a bid paddle is in Sotheby's sole discretion.

Once the first bid has been placed, the auctioneer asks for higher bids, in increments determined by the auctioneer. To place your bid, simply raise your paddle until the auctioneer acknowledges you. You will know when your bid has been acknowledged; the auctioneer will not mistake a random gesture for a bid.

If you wish to register to bid on a Premium Lot, please see the paragraph above.

All lots sold will be invoiced to the name and address in which the paddle has been registered and cannot be transferred to other names and addresses. Sotheby's reserves the right to refuse to accept payment from a source other than the buyer of record.

Advance Bidding For certain sales, bidders are welcome to submit bids in advance of the live auction ("Advance Bids") through the Online Platforms. For these sales, if you submit an "Advance Bid" (as described above in "BEFORE THE AUCTION"), and your bid is not executed up to its maximum value before the auction begins, your bid will continue to be executed automatically on your behalf during the live auction up to your predetermined maximum bid. You may also continue to bid via the Online Platforms at the next increment above your maximum bid.

Telephone Bidding In some circumstances, we offer the ability to place bids by telephone live to a Sotheby's representative on the auction floor. Please contact the Bid Department prior to the sale to make arrangements or to answer any questions you may have. Telephone bids are accepted only at Sotheby's discretion and at the caller's risk. Calls may also be recorded at Sotheby's discretion. By bidding on the telephone, prospective buyers consent thereto.

Live Online Bidding If you cannot attend the live auction, it may be possible to bid live online via the Online Platforms for selected sales. For information about registering to bid on sothebys.com or through the Sotheby's App, please see www.sothebys.com. Bidders utilizing any online platform are subject to the Online Terms as well as the relevant Conditions of Sale. Online bidding may not be available for Premium Lots.

Employee Bidding Sotheby's employees may bid in a Sotheby's auction only if the employee does not know the reserve and if the employee fully complies with Sotheby's internal rules governing employee bidding.

US Economic Sanctions The United States maintains economic and trade sanctions against targeted foreign countries, groups and organizations. There may be restrictions on the import into the United States of certain items originating in sanctioned countries, including Cuba, Iran, North Korea and Sudan. The purchaser's inability to import any item into the US or any other country as a result of these or other restrictions shall not justify cancellation or rescission of the sale or any delay in payment. Please check with the specialist department if you are uncertain as to whether a lot is subject to these import restrictions, or any other restrictions on importation or exportation.

Hammer Price and the Buyer's Premium For lots which are sold, the last price for a lot as announced by the auctioneer is the hammer price. A buyer's premium will be added to the hammer price and is payable by the purchaser as part of the total purchase price. The buyer's premium will be the amount stated in the Conditions of Sale.

Currency Board As a courtesy to bidders, a currency board is operated in many salesrooms. It displays the lot number and current bid in both U.S. dollars and foreign currencies. Exchange rates are approximations based on recent exchange rate information and should not be relied upon as a precise invoice amount. Sotheby's assumes no responsibility for any error or omission in foreign or United States currency amounts shown.

Results Sale results are available on Sothebys.com and on the Sotheby's App.

International Auctions If you need assistance placing bids, obtaining condition reports or receiving auction results for a Sotheby's sale outside the United States, please contact our International Client Services Department.

4. AFTER THE AUCTION

Payment If your bid is successful, you can go directly to Post Sale Services to make payment arrangements. Otherwise, your invoice will be mailed to you. The final price is determined by adding the buyer's premium to the hammer price on a per-lot basis. Sales tax, where applicable, will be charged on the entire amount. Payment is due in full immediately after the sale. However, under certain circumstances, Sotheby's may, in its sole discretion, offer bidders an extended payment plan. Such a payment plan may provide an economic benefit to the bidder. Credit terms should be requested at least one business

day before the sale. However, there is no assurance that an extended payment plan will be offered. Please contact Post Sale Services or the specialist in charge of the sale for information on credit arrangements for a particular lot. Please note that Sotheby's will not accept payments for purchased lots from any party other than the purchaser, unless otherwise agreed between the purchaser and Sotheby's prior to the sale.

Payment by Cash It is against Sotheby's general policy to accept payments in the form of cash or cash equivalents.

Payment by Credit Cards Sotheby's accepts payment by credit card for Visa, MasterCard, and American Express only. Credit card payments may not exceed \$50,000 per sale. Payment by credit card may be made (a) online at <https://www.sothebys.com/en/invoice-payment.html>, (b) through the Sotheby's App, (c) by calling in to Post Sale Services at +1 212 606 7444, or (d) in person at Sotheby's premises at the address noted in the catalogue.

Payment by Check Sotheby's accepts personal, certified, banker's draft and cashier's checks drawn in US Dollars (made payable to Sotheby's). While personal and company checks are accepted, property will not be released until such checks have cleared, unless you have a pre-arranged check acceptance agreement. Application for check clearance can be made through the Post Sale Services.

Certified checks, banker's drafts and cashier's checks are accepted at Sotheby's discretion and provided they are issued by a reputable financial institution governed by anti-money laundering laws. Instruments not meeting these requirements will be treated as "cash equivalents" and subject to the constraints noted in the prior paragraph titled "Payment By Cash".

Payment by Wire Transfer To pay for a purchase by wire transfer, please refer to the payment instructions on the invoice provided by Sotheby's or contact Post Sale Services to request instructions.

Sales and Use Tax New York sales tax is charged on the hammer price, buyer's premium and any other applicable charges on any property picked up or delivered in New York State, regardless of the state or country in which the purchaser resides or does business. Purchasers who wish to use their own shipper who is not a considered a "common carrier" by the New York Department of Taxation and Finance will be charged New York sales tax on the entire charge regardless of the destination of the property. Please refer to "Information on Sales and Use Tax Related to Purchases at Auction" in the back of the catalogue.

Collection and Delivery

Post Sale Services
+ 1 212 606 7444
FAX: + 1 212 606 7043
uspostsaleservices@sothebys.com

Once your payment has been received and cleared, property may be released. Unless otherwise agreed by Sotheby's, all purchases must be removed by the 30th calendar day following a sale.

Shipping Services Sotheby's offers a comprehensive shipping service to meet all of your requirements. If you received a shipping quotation or have any questions about the services we offer please contact us.

Collecting your Property As a courtesy to purchasers who come to Sotheby's to collect property, Sotheby's will assist in the packing of lots, although Sotheby's may, in the case of fragile articles, choose not to pack or otherwise handle a purchase.

If you are using your own shipper to collect property from Sotheby's, please provide a letter of authorization and kindly instruct your shipper that they must provide a Bill of Lading prior to collection. Both documents must be sent to Post Sale Services prior to collection.

The Bill of Lading must include: the purchaser's full name, the full delivery address including the street name and number, city and state or city and country, the sale and lot number.

Sotheby's will contact your shipper within 24 hours of receipt of the Bill of Lading to confirm the date and time that your property can be collected. Property will not be released without this confirmation and your shipper must bring the same Bill of Lading that was faxed to Sotheby's when collecting. All property releases are subject to the receipt of cleared funds.

Please see the Conditions of Sale for further details.

Endangered Species Certain property sold at auction, for example, items made of or incorporating plant or animal materials such as coral, crocodile, ivory, whalebone, tortoiseshell, rhinoceros horn, rosewood, etc., irrespective of age or value, may require a license or certificate prior to exportation and additional licenses or certificates upon importation to another country. Sotheby's suggests that buyers check on their government wildlife import requirements prior to placing a bid. Please note that the ability to obtain an export license or certificate does not ensure the ability to obtain an import license or certificate in another country, and vice versa. It is the purchaser's responsibility to obtain any export or import licenses and/or certificates as well as any other required documentation. In the case of denial of any export or import license or of delay in the obtaining of such licenses, the

purchaser is still responsible for making on-time payment of the total purchase price for the lot.

Although licenses can be obtained to export some types of endangered species, other types may not be exported at all, and other types may not be resold in the United States. Upon request, Sotheby's is willing to assist the purchaser in attempting to obtain the appropriate licenses and/or certificates. However, there is no assurance that an export license or certificate can be obtained. Please check with the specialist department or the Shipping Department if you are uncertain as to whether a lot is subject to these export/import license and certificate requirements, or any other restrictions on exportation.

The Art Loss Register As part of Sotheby's efforts to support only the legitimate art market and to combat the illegitimate market in stolen property, Sotheby's has retained the Art Loss Register to check all uniquely identifiable items offered for sale in this catalogue that are estimated at more than the equivalent of US\$1,500 against the Art Loss Register's computerized database of objects reported as stolen or lost. The Art Loss Register is pleased to provide purchasers with a certificate confirming that a search has been made. All inquiries regarding search certificates should be directed to The Art Loss Register, First Floor, 63-66 Hatten Garden, London EC1N 8LE or by email at artloss@artloss.com. The Art Loss Register does not guarantee the provenance or title of any catalogued item against which they search, and will not be liable for any direct or consequential losses of any nature howsoever arising. This statement and the ALR's service do not affect your rights and obligations under the Conditions of Sale applicable to the sale.

SELLING AT AUCTION

If you have property you wish to sell, Sotheby's team of specialists and client services representatives will assist you through the entire process. Simply contact the appropriate specialist (specialist departments are listed in the back of this catalogue), General Inquiries Department or a Sotheby's regional office representative for suggestions on how best to arrange for evaluation of your property.

Property Evaluation There are three general ways evaluation of property can be conducted:

(1) In our galleries

You may bring your property directly to our galleries where our specialists will give you auction estimates and advice. There is no charge for this service, but we request that you telephone ahead for an appointment. Inspection hours are 9:30 am to 5 pm, Monday through Friday.

(2) By photograph

If your property is not portable, or if you are not able to visit our galleries, you may bring in or send a clear photograph of each item. If you have a large collection, a representative selection of photographs will do. Please be sure to include the dimensions, artist's signature or maker's mark, medium, physical condition and any other relevant information. Our specialists will provide a free preliminary auction estimate subject to a final estimate upon first-hand inspection.

(3) In your home

Evaluations of property can also be made in your home. The fees for such visits are based on the scope and diversity of property, with travel expenses additional. These fees may be rebated if you consign your property for sale at Sotheby's. If there is considerable property in question, we can arrange for an informal "walkthrough."

Once your property has been evaluated, Sotheby's representatives can then help you determine how to proceed should you wish to continue with the auction process. They will provide information regarding sellers' commission rates and other charges, auction venue, shipping and any further services you may require.

SOTHEBY'S SERVICES

Sotheby's also offers a range of other services to our clients beyond buying and selling at auction. These services are summarized below. Further information on any of the services described below can be found at sothebys.com.

Valuations and Appraisals

Sotheby's Valuations and Appraisals Services offers advice regarding personal property assets to trusts, estates, and private clients in order to help fiduciaries, executors, advisors, and collectors meet their goals. We provide efficient and confidential advice and assistance for all appraisal and auction services. Sotheby's can prepare appraisals to suit a variety of needs, including estate tax and planning, insurance, charitable contribution and collateral loan. Our appraisals are widely accepted by the Internal Revenue Service, tax and estate planning professionals, and insurance firms. In the event that a sale is considered, we are pleased to provide auction estimates, sales proposals and marketing plans. When sales are underway, the group works closely with the appropriate specialist departments to ensure that clients' needs are met promptly and efficiently.

Financial Services Sotheby's offers a wide range of financial services including advances on consignments, as well as loans secured by art collections not intended for sale.

Museum Services Tailored to meet the unique needs of museums and non-profits in the marketplace, Museum Services offers personal, professional assistance and advice in areas including appraisals, deaccessions, acquisitions and special events.

Corporate Art Services

Devoted to servicing corporations, Sotheby's Corporate Art Services Department can prepare appraisal reports, advise on acquisitions and deaccessions, manage all aspects of consignment, assist in developing arts-management strategies and create events catering to a corporation's needs.

INFORMATION ON SALES AND USE TAX RELATED TO PURCHASES AT AUCTION

To better assist our clients, we have prepared the following information on Sales and Use Tax related to property purchased at auction.

Why Sotheby's Collects Sales Tax

Virtually all State Sales Tax Laws require a corporation to register with the State's Tax Authorities and collect and remit sales tax if the corporation either establishes or maintains physical or economic presence within the state. In the states that impose sales tax, Tax Laws require an auction house, with such presence in the state, to register as a sales tax collector, and remit sales tax collected to the state. New York sales tax is charged on the hammer price, buyer's premium and any other applicable charges on any property picked up or delivered in New York, regardless of the state or country in which the purchaser resides or does business.

Where Sotheby's Collects

Sales Tax Sotheby's is currently registered to collect sales tax in the following states: Alabama, Arizona, Arkansas, California, Colorado, Connecticut, District of Columbia, Florida, Georgia, Hawaii, Idaho, Illinois, Indiana, Iowa, Kansas, Kentucky, Maine, Maryland, Massachusetts, Michigan, Minnesota, Missouri, Nebraska, Nevada, New Jersey, New Mexico, New York, North Carolina, Ohio, Oklahoma, Pennsylvania, Rhode Island, South Carolina, Tennessee, Texas, Utah, Vermont, Virginia, Washington, Wisconsin and Wyoming. For any property collected or received by the purchaser in New York City, such property is subject to sales tax at the existing New York State and City rate of 8.875%.

Sotheby's Arranged Shipping

If the property is delivered into any state in which Sotheby's is registered, Sotheby's is required by law to collect and remit the appropriate sales tax in effect in the state where the property is delivered.

Client Arranged Shipping

Property collected from Sotheby's New York premises by a common carrier hired by the purchaser for delivery at an address outside of New York is not subject to New York Sales Tax, but if the property is delivered into any state in which Sotheby's is registered, Sotheby's is required by law to collect and remit the appropriate sales tax in effect in the state where the property is delivered. New York State recognizes shippers such as the United States Postal Service, United Parcel Service, FedEx, or the like as "common carriers". If a purchaser hires a shipper other than a common carrier to pick up property, Sotheby's will collect New York sales tax at a rate of 8.875% regardless of the ultimate destination of the goods. If a purchaser utilizes a freight-forwarder who is registered

with the Transportation Security Administration ("TSA") to deliver property outside of the United States, no sales tax would be due on this transaction.

Where Sotheby's is Not

Required to Collect Sales Tax Sotheby's is not required to collect sales tax on property delivered to states other than those listed above. If the property is delivered to a state where Sotheby's is not required to collect sales tax, it is the responsibility of the purchaser to self-assess any sales or use tax and remit it to taxing authorities in that state.

Sotheby's is not required to collect sales tax for property delivered to the purchaser outside of the United States.

Restoration and Other Services Regardless of where the property is subsequently transported, if any framing or restoration services are performed on the property in New York, it is considered to be a delivery of the property to the purchaser in New York, and Sotheby's will be required to collect the 8.875% New York sales tax.

Certain Exemptions Most states that impose sales taxes allow for specified exemptions to the tax. For example, a registered re-seller such as a registered art dealer may purchase without incurring a tax liability, and Sotheby's is not required to collect sales tax from such re-seller. The art dealer, when re-selling the property, may be required to charge sales tax to its client, or the client may be required to self-assess sales or use tax upon acquiring the property.

Local Tax Advisors As sales tax laws vary from state to state, Sotheby's recommends that clients with questions regarding the application of sales or use taxes to property purchased at auction seek tax advice from their local tax advisors.

IMPORTANT NOTICES

Property Collection All property that is sold, has been bought in, or is to be returned to the consignor will remain at 11334 York Avenue for collection. Exceptions to this policy may include property considered to be oversized and monumental works of art. Invoices and statements will indicate your property's location. Refer to our Property Collection information at www.sothebys.com/pickup.

Property Payment All property must be paid in full before collection or release from any Sotheby's location. Payment must be made through Sotheby's New York Post Sale Services by way of our acceptable forms of payment methods mentioned on your invoice. To arrange for payment, please contact Post Sale Services at +1 212 606 7444 or USPostSaleServices@sothebys.com. Payment will not be accepted at the offsite facility. Dealers and resale clients should fill out the appropriate forms where applicable or contact Post Sale Services with any questions.

Loss and Liability Unless otherwise agreed by Sotheby's, all sold property must be removed from any of our premises (including the SLP Warehouse) by the buyer at their expense no later than 30 calendar days following its sale. Buyers are reminded that Sotheby's liability for loss or damage to sold property shall cease no later than 30 calendar days after the date of the auction.

Collection & Shipping Where applicable, the SLP Warehouse requires 24 hours advanced notice for collection of property. Please arrange this through our Post Sale Services team at +1 212 606 7444 or USPostSaleServices@sothebys.com.

For in-person collections at our offsite location, please alert Post Sale Services of your proposed collection date, ensure that all outstanding invoices have been paid for, and that you or your

agent have the appropriate photo identification upon arrival.

If you are using your own shipper to collect property, please provide a letter of authorization and instruct your shipper to email their bill of lading to billsoflading@sothebys.com and ensure the correct collection location is specified.

Sotheby's can arrange for delivery of your property through one of our contracted vendors or can coordinate pick up at our offsite location with you or your shipper directly. Please contact Post Sale Services at +1 212 606 7444 or USPostSaleServices@sothebys.com to start your collection process.

Regarding Jewelry Statements in the catalogue regarding the condition of lots in this sale usually appear in the description. However, the absence of any such reference does not imply that a lot is in perfect condition or completely free from wear or imperfections. Sotheby's will be pleased to offer condition reports of the lots to potential purchasers. Please call the jewelry representatives as set forth in the front of the catalogue.

Any gemological terms used in the catalogue have the same meanings as set forth in the Federal Trade Commission's guides for the jewelry, precious metals and pewter industries. A copy of these guidelines is available from Sotheby's upon request.

Regarding Diamonds Sotheby's shares the concerns expressed by the United Nations Security Council with respect to uncut diamonds potentially coming from Angola and Sierra Leone. We will comply fully with any obligations imposed in connection with the Security Council's resolutions regarding these matters.

Treatment and Condition of Gemstones Traditionally, gemstones have been treated by a variety of techniques to enhance

color and generally to improve their appearance. Typically, rubies and sapphires have been heat treated and emeralds have been treated by oil or resin to improve color and clarity. These or other techniques, such as dyeing, irradiation, coating and impregnation, may be used on other gemstones.

Although it is widely believed that heat treatments are permanent, purchasers should assume that any treatment may not be permanent in nature and that over time special care of the stone may be required. Prospective purchasers are reminded that, unless the catalogue description specifically states that a stone is natural, we have assumed that some form of treatment may have been used and that such treatment may not be permanent. Our presale estimates reflect this assumption.

To the extent that Sotheby's has laboratory reports containing specific information on the treatment of a stone, these reports are made available for review by potential purchasers. Available reports from internationally recognized gemological laboratories will be noted in the description of the item. New forms of treatments and new scientific methods to discern them are constantly being developed. Consequently, there may be a lack of consensus among laboratories as to whether gemstones have been treated, the extent of the treatment or the permanence of the treatment.

References in the catalogue descriptions to certificates or reports issued by gemological laboratories are included only for the information of bidders and Sotheby's accepts no responsibility for the accuracy, terms or information contained in such certificates or reports. Statements in the catalogue regarding the condition of lots in this sale usually appear in the description. However, the absence of any such reference does not imply that a lot is in perfect condition or completely free from

wear or imperfections. Sotheby's will be pleased to offer condition reports on all lots of the sale to potential purchasers. Please call the jewelry representatives set forth in the front of the catalogue.

Gemological Certificates and Reports References in the catalogue descriptions to certificates or reports issued by gemological laboratories are provided only for the information of bidders, and Sotheby's does not guarantee and accepts no responsibility for the accuracy, terms or information contained in such certificates or reports. Please also note that laboratories may differ in their assessment of a gemstone (including its origin and presence, type and extent of treatments) and their certificates or reports may contain different results.

Certificates of Authenticity Various manufacturers may not issue certificates of authenticity upon request. Except as specifically noted in the catalogue, Sotheby's will not be required to furnish the purchaser with a certificate of authenticity from the manufacturer at any time. Unless the requirements for a rescission of the sale under the Terms of Guarantee are satisfied, the failure of a manufacturer to issue a certificate will not constitute grounds to rescind the sale.

Country of Origin While Sotheby's attempts to obtain accurate information on the country of origin of the gemstones, in accordance with paragraph 1 of the Conditions of Sale, Sotheby's does not guarantee the correctness of the catalogue or other description of the gemstones including the country of origin.

Stone Weights Weights of stones printed in the catalogue and preceded by the words "stated to be," "about" or "approximately" are not guaranteed by Sotheby's. Prospective buyers are reminded that all lots are sold as shown.

Regarding Condition of

Watches Prospective buyers should satisfy themselves by personal inspection as to the condition of each lot. If the prospective buyer is not able to inspect the piece, as a courtesy to our clients, we are pleased to provide an opinion of the condition of the property on request. However, since we are not professional watch restorers, any statement of opinion listed is purely subjective and is not a statement of fact. Condition reports may not specify all mechanical replacements or imperfections to the movement, case, dial, pendulum, separate base(s) or dome or any other replacements or additions to the lot. The absence of a condition report or the absence of a reference to damage in the catalogue does not imply that the lot is in good condition, working order or free from restoration or repair. Watches in water-resistant cases have no warranties that are made that the watches are currently water-resistant. Please note that we do not guarantee the authenticity of any individual component parts, such as wheels, hands, crowns, crystals, screws, bracelets and leather bands, since subsequent repairs and restoration work may have resulted in the replacement of original parts.

In addition, certain manufacturers will not service or repair pieces if all of the component parts are not original to the piece. The refusal of a manufacturer to service or repair a piece on this basis does not constitute grounds to rescind the sale under the Terms of Guarantee. Furthermore, in reference to bands, we do not guarantee the material of manufacture. Please be advised that the purchaser will be responsible for complying with any applicable export and import matters, particularly in relation to endangered species and the United States Department of Fish and Wildlife Services.

Payments and Pick-Up All payments to be made at Client Accounting, 1334 York Avenue. See below for dates and times. Pick-Up: From the Jewelry Department, 6th Floor, 1334 York Avenue.

The schedule for property pick-up will be as follows:

Tuesday, 10 December
10:00 am - 5:00 pm
Wednesday, 11 December
10:00 am - 5:00 pm
Thursday, 12 December
10:00 am - 5:00 pm
Friday, 13 December
10:00 am - 5:00 pm
Monday, 16 December
10:00 am - 5:00 pm

Decorative Photography

Lara Jade

Photography

Pauline Shapiro
Ellen Warfield

Ring Sizes

Metric	French/Japanese	English	American
37.8252	-	A	1/2
38.4237	-	A1/2	3/4
39.0222	-	B	1
39.6207	-	B1/2	11/4
40.2192	-	C	11/2
40.8177	-	C1/2	13/4
41.4162	1	D	2
42.0147	2	D1/2	21/4
42.6132	-	E	21/2
43.2117	3	E1/2	23/4
43.8102	4	F	3
44.4087	-	F1/2	33/4
45.0072	5	G	31/4
45.6057	-	G1/2	31/2
46.2042	6	H	33/4
46.8027	-	H1/2	4
47.4012	7	I	41/4
47.9997	8	I1/2	41/2
48.5982	-	J	43/4
49.1967	9	J1/2	5
49.7952	10	K	51/4
50.3937	-	K1/2	51/2
50.9922	11	L	53/4
51.5907	-	L1/2	6
52.1892	12	M	61/4
52.7877	13	M1/2	61/2
53.4660	-	N	63/4
54.1044	14	N1/2	7
54.7428	15	O	7
55.3812	-	O1/2	71/4
56.0196	16	P	71/2
56.6580	-	P1/2	73/4
57.2964	17	Q	8

Diamond Clarity Grading

Clarity grading relates to the impurities in a diamond. All clarity grading is carried out under a 10x magnification. The more impurities in a diamond the lower the price per carat.

FL	Flawless	No blemishes or inclusions
IF	Internally Flawless	No inclusions and only insignificant blemishes.
VVS1 & VVS2	Very Very Slightly Included	Extremely difficult to see, visible only from the back of the stone, or small and shallow enough to be removed easily by repolishing. In VVS2, inclusions are still very difficult to see.
VS1 & VS2	Very Slightly Included	Still difficult to see with the untrained eye.
SI1 & SI2	Slightly Included	Easy (SI1) or very easy (SI2) to see with a 10x lens. When these have been located with a 10x lens, look at the stone with the naked eye and the inclusions can sometimes be spotted
I1, I2 & I3	Imperfect	May be eye-visible face up without the aid of a lens. In I3, they may threaten the stones durability.

Diamond Color Grading

GIA	
D	The top color grades, D, E, F, for a diamond is when it looks colorless against a white background.
E	
F	
G	In near colorless diamonds, G, H, I, there is a slight trace of color which will not be apparent to the untrained eye. Stones 0.50Ct or less will look colorless.
H	
I	
	Diamonds graded J, K, L, will have notable traces of color. Small stones in this range will 'face up' colorless when mounted but larger stones will be tinted.
J	
K	
L	
	Diamonds graded M-Z will display a yellowish tint even to the untrained eye.
M	
↓	
Z	Z+ color grade indicates that the diamond is of fancy color and therefore fall into a different price bracket.
Z+	

Glossary of Terms

The following are examples of the terminology used in this catalogue. Please note that all statements made in this catalogue are made subject to the provisions of the Conditions of Sale and Terms of Guarantee printed in this catalogue:

Signatures

BOLD TYPE HEADING

When the maker's name appears in Bold Type Heading in the catalogue description, in Sotheby's opinion, the piece is by the named jeweler.

NAME OF JEWELER

When we state the name of a maker in the catalogue description below the Bold Type Heading, we mean that, in Sotheby's opinion, although unsigned, the piece is by the named jeweler.

MOUNTING BY

When we state in the catalogue description below the Bold Type Heading "Mounting by_____"; we mean that, in Sotheby's opinion, the mounting is by the jeweler, and the gemstones were not supplied by the jeweler or the piece has been altered in some way after its manufacture.

Diamond List

COLOR	CLARITY	CARAT WEIGHT	SHAPE	LOT
D	IF	2.13	Pear	24
D	VVS1	2.32	Cushion	248
D	VS1	3.94	Pear	291
D	SI1	5.04	Pear	208
D	SI2	2.84	Pear	286
D	SI2	1.11	Oval	179
F	VS2	3.26	Round	229
F	VS2	2.68	Emerald-Cut	287
F	SI2	6.10	Pear	275
G	VVS1	2.31	Cushion	41
G	VS1	4.14	Marquise	260
G	VS2	5.04	Round	251
H	SI1	6.00	Marquise	191
J	VVS2	4.06	Emerald-Cut	152
J	VS1	4.40	Emerald-Cut	236
J	VS2	4.61	Emerald-Cut	135
J	SI1	6.48	Square Emerald-Cut	277
J	SI1	3.23	Round	296
K	SI1	3.12	Marquise	281
M	SI1	5.92	Emerald-Cut	37
Fancy Vivid Yellow	IF	4.01	Oval	167
Fancy Intense Yellow	VVS1	3.40	Emerald-Cut	90
Fancy Yellow	N/A	2.15	Cut-Cornered Rectangular Modified Brilliant	256
Fancy Light Yellow / Fancy Light Yellow	VS2 / I2	6.86 / 6.79	Cut-Cornered Square Modified Brilliant	299
Fancy Deep Brownish Greenish Yellow	SI2	2.04	Round	272

Colored Stone List

RUBY					
LOT	SHAPE	CARAT WEIGHT	ORIGIN	TREATMENT	LAB
67	Octagonal	5.01	Burmese	Heat; Insignificant	AGL, GRS
244	Oval	6.90	Burmese	Heat; Minor	AGL

EMERALD					
LOT	SHAPE	CARAT WEIGHT	ORIGIN	TREATMENT	LAB
66	Emerald-Cut	15.75	Zambian	Faint to Moderate	AGL
85	Pear	1.89	Colombian	Minor	GIA
87	Emerald-Cut	Approx. 8.00	Colombian	Minor; Traditional	AGL
132	Emerald-Cut	4.74	Colombian	Minor; Traditional	AGL
205	Emerald-Cut	9.48	Colombian	Minor; Traditional	AGL
207	Emerald-Cut	5.65	Colombian	Minor; Modern	AGL
273	Cushion	3.40 and 3.09	Colombian	Moderate; Modern	AGL
284	Square Step-Cut	3.81	Colombian	Minor; Traditional	AGL

SAPPHIRE					
LOT	SHAPE	CARAT WEIGHT	ORIGIN	TREATMENT	LAB
27	Rectangular	Approx. 3.90	Ceylon	No Heat	AGL
32	Oval	4.06	Madagascar	No Heat	AGL
71	Cushion	6.45	Burmese	No Heat	AGL
75	Round	17.50	Ceylon; Burmese	No Heat	AGL; AGTA
85	Cushion	7.23	Ceylon	No Heat	AGL
85	Cushion	3.70	Burmese	No Heat	AGL
85	Cushion	1.56	Kashmir	No Heat	AGL
93	Cabochon	18.3 x 14.9 x 12.9 mm	Ceylon	No Heat	AGL
174	Cabochon	12.3 x 11.0 x 6.4 mm	Thai	Heat	AGL
252	Oval	Approx. 5.60 and 4.80	Ceylon	Heat	AGL

International Departments

For a full listing of our offices and salerooms worldwide with detailed information on all of Sotheby's services, visit sothebys.com

David Bennett
*Worldwide Chairman,
International Jewelry Division*

Gary Schuler
*Chairman,
North and South America*

Daniela Mascetti
*Chairman,
Jewelry, Europe*

Patti Wong
*Chairman, Asia
Chairman, Sotheby's Diamonds*

Wenhao Yu
*Senior Director,
Deputy Chairman,
Asia*

Andres White Correal
*Director of International Business
Development*

Yang Bu
*Senior Business Director,
North America*

Rebecca Spencer
Senior Business Director, Europe

Jessica Whitman
Business Director, London

Scott Roworth
Senior Business Director, Asia

NORTH AMERICA

NEW YORK

Gary Schuler
Frank Everett
Catharine Becket
Robin Wright
Alexander Eblen
Kendall Reed
+1 212 606 7392

Sotheby's Diamonds
+1 212 894 1400

SAN FRANCISCO

Carol Elkins
+1 415 772 9027

LOS ANGELES

Quig Bruning
+1 310 274 0340
Yvonne Teng
+1 310 786 1864

EUROPE

GENEVA

David Bennett
Daniela Mascetti
Jessica Wyndham
Olivier Wagner
Benoit Repellin
Joanna Gong
Prince Abdul'Aziz Toussoun ‡
Associate, Europe
+41 22 908 48 49

LONDON

Kristian Spofforth
Nikita Binani
Justin Roberts
Johanna Seehuusen
Andres White Correal
+44 20 7293 6409

MILAN

Sara Miconi
+39 02 295 00201
Daniela Mascetti
+41 22 908 48 49

PARIS

Magali Teisseire
Gabriella Mantegani
Tifenn Bouric
+33 1 5305 5337

AMSTERDAM

Albertine Verlinde
+31 20 550 2204

BRUSSELS

Marianna Lora
+32 2 648 0080

LUGANO

Iris Fabbri
+41 91 993 30 60

MADRID

Andres White Correal
+34 91 576 5714

MONACO

Douglas Walker
+377 93 30 8880

MUNICH

Heinrich Graf von Spreiti
+49 89 2909 5121

ROME

Luisa Lepri
+39 06 699 41791

TEL AVIV

Sigal Mordechai
+972 3 560 1666

DUBAI

Sophie Stevens
+44 78 4036 7595

VIENNA

Andrea Jungmann
+43 1 512 4772

ASIA

HONG KONG

Wenhao Yu
Yvonne Chu
Cristel Tan
Shanne Ng
Diana Chang
Kelly Mak
Uni Kim
Jane Ki
Quek Chin Yeow ‡
Flora Wong ‡
Willy Wong ‡
+852 2822 8112

Sotheby's Diamonds
Lisa Chow
+852 2822 8113

BEIJING

Lei Tang
+86 20 6408 8890

SHANGHAI

Rachel Shen
+86 21 6288 7500

INDONESIA

Jasmine Prasetio
+62 21 5797 3603

JAPAN

Aki Uemura
+81 3 6457 9160

MALAYSIA

Walter Cheah ‡
+603 2070 0319

PHILIPPINES

Angela Hsu
+63 917 815 0075

SINGAPORE

Esther Seet
+65 6732 8239

TAIWAN

Wendy Lin
Nicolette Chou
+886 2 2757 6689

THAILAND

Wannida Saetieo
+66 2 253 3108

Consultant ‡

How to Bid



1. BROWSE

Go to [sothebys.com](https://www.sothebys.com) or the Sotheby's app to find works you are interested in.



2. REGISTER

Sign up to place bids.



3. BID

Bid before and during the auction, from anywhere in the world.

FOR ASSISTANCE WITH REGISTRATION AND BIDDING

Enquiries@sothebys.com

US +1 212 606 7000 **UK** +44 (0) 20 7293 5000 **HK** +852 2822 8142

[sothebys.com/bidonline](https://www.sothebys.com/bidonline) FOLLOW US @SOTHEBYS



Index of Makers

Maker	Lot	Maker	Lot
Aletto Brothers	175, 243, 263	Kieselstein-Cord	301
Angela Cummings for Tiffany & Co.	166		
Anne-Marie of France	171, 172	Lacloche Frères	29
Boucheron	23, 142, 143, 144, 145, 146, 147, 148, 195, 217, 219, 240	M. Gérard	242
Buccellati	79, 80, 82, 100, 108, 112, 116, 117, 124, 177, 249	Marina B	96, 161, 293
Bulgari	22, 51, 52, 90, 160, 215, 227, 230, 231, 269, 270, 282, 289	Mounted by Harry Winston	221
Cartier	34, 49, 53, 69, 89, 102, 109, 114, 118, 119, 123, 133, 139, 192, 203, 206, 213, 238, 241, 274, 280	Nardi	67
Carvin French	50	Neil Lane	9
Chanel	258	Oscar Heyman & Brothers	65
Charles Loloma	131	René Boivin	186, 245
Chaumet	129, 158	Ruser	58, 93
David Birnbaum	39	Schlumberger for Tiffany & Co.	54, 104, 113, 115, 159, 297
David Webb	1, 2, 43, 47, 63, 122, 127, 176, 196, 234, 237, 238, 271, 294	Seaman Schepps	19, 101, 138, 266, 303, 304, 306
De Grisogono	150	Sifen Chang	220
Graff	32, 268	Solange Azagury-Partridge	151
H. Stern	276	Sterlé	121
Harry Winston	260	Taffin	288
Howard & Co.	140	Tiffany & Co.	3, 41, 48, 70, 76, 99, 103, 105, 106, 126, 128, 174, 225, 248, 253
JAR	7, 21, 97, 162, 198, 262, 283	Van Cleef & Arpels	11, 12, 17, 64, 68, 72, 74, 78, 81, 84, 88, 91, 92, 107, 153, 155, 156, 163, 173, 212, 226, 235, 261, 267, 292, 295, 298, 302
Jean Schlumberger	55	Verdura	4, 5, 6, 8, 33, 46, 57, 154, 169
Jeff Wise	130	Vhernier	26

**SOTHEBY'S EXECUTIVE
MANAGEMENT**

Charles F. Stewart
Chief Executive Officer

John Auerbach
**Art & Objects Division, Americas
Digital Businesses, Worldwide**

Jean-Luc Berrebi
**Chief Financial Officer
Worldwide**

Jill Bright
**Human Resources
Administration
Worldwide**

Amy Cappellazzo
**Chairman
Fine Art Division**

Valentino D. Carlotti
**Business Development
Worldwide**

Kevin Ching
**Chief Executive Officer
Asia**

Ken Citron
**Operations and Chief
Transformation Officer
Worldwide**

Lauren Gioia
**Communications
Worldwide**

Jane Levine
**Chief Compliance Counsel
Worldwide**

Jonathan Olsoff
**General Counsel
Worldwide**

Jan Prasens
**Managing Director
Europe, Middle East, Russia,
India and Africa**

Allan Schwartzman
**Chairman
Fine Art Division**

Patti Wong
**Chairman
Asia**

**SOTHEBY'S INTERNATIONAL
COUNCIL**

Robin Woodhead
Chairman

Jean Fritts
Deputy Chairman

John Marion
Honorary Chairman

Juan Abelló
Judy Hart Angelo
Anna Catharina Astrup

Nicolas Berggruen
Philippe Bertherat
Lavinia Borromeo
Dr. Alice Y.T. Cheng

Laura M. Cha
Halit Cingilloğlu
Jasper Conran

Henry Cornell
Quinten Dreesmann
Ulla Dreyfus-Best

Jean Marc Etlin
Tania Fares
Comte Serge de Ganay

Ann Getty
Yassmin Ghandehari
Charles de Gunzburg

Ronnie F. Heyman
Shalini Hinduja
Pansy Ho

Prince Aryn Aga Khan
Catherine Lagrange
Edward Lee

Jean-Claude Marian
Batia Ofer
Georg von Opel

Marchesa Laudomia Pucci
Castellano
David Ross

Patrizia Memmo Ruspoli
Rolf Sachs
René H. Scharf

Biggi Schuler-Voith
Judith Taubman
Olivier Widmaier Picasso
The Hon. Hilary M. Weston,
CM, CVO, OOnt

CHAIRMAN'S OFFICE

AMERICAS

Lisa Dennison
Benjamin Doller
George Wachter

Thomas Bompard
Lulu Creel
Nina del Rio
Mari-Claudia Jimenez
Brooke Lampley
Gary Schuler
Simon Shaw
Lucian Simmons
August Uribe

EUROPE

Oliver Barker
Helena Newman
Mario Tavella

Alex Bell
Michael Berger-Sandhofer
David Bennett
Lord Dalmeny
Claudia Dwek
Edward Gibbs
George Gordon
Franka Haiderer
Henry Howard-Sneyd
Caroline Lang
Cedric Lienart
Daniela Mascetti
Yamini Mehta
Wendy Philips
Lord Poltimore
Samuel Valette
Albertine Verlinde
Roxane Zand

ASIA

Patti Wong
Nicolas Chow

Lisa Chow
Jen Hua
Yasuaki Ishizaka
Wendy Lin
Rachel Shen



Sotheby's 
Collectors gather here.